

Walham Grove

£3,400 Per Month

BRIK



Walham Grove

£3,400 Per
Month

2 BED
Flat

0000
SQ FT

0000
SQ M

A spacious and naturally bright two double bedroom apartment with maintained communal gardens shared with only two other flats in the same building.

This unique one of a kind building offers larger than average room sizes and is situated on the first floor of a block containing just three apartments. The property comprises of two double bedrooms, one with en suite shower room, separate kitchen, living room with space for dining, two private balconies one at the front and one to the rear, family bathroom and access to fabulous communal gardens.

Walham Grove is situated in the heart of Fulham, just a short distance from Fulham Broadway tube station and within easy reach of all restaurants bars and cafes in the area. Energy rating c.

- Two double bedrooms
- Two bathrooms
- Bright reception
- Separate kitchen
- Extra storage room
- Excellent location
- Two private balconies
- Beautiful communal garden
- Long let
- Unfurnished

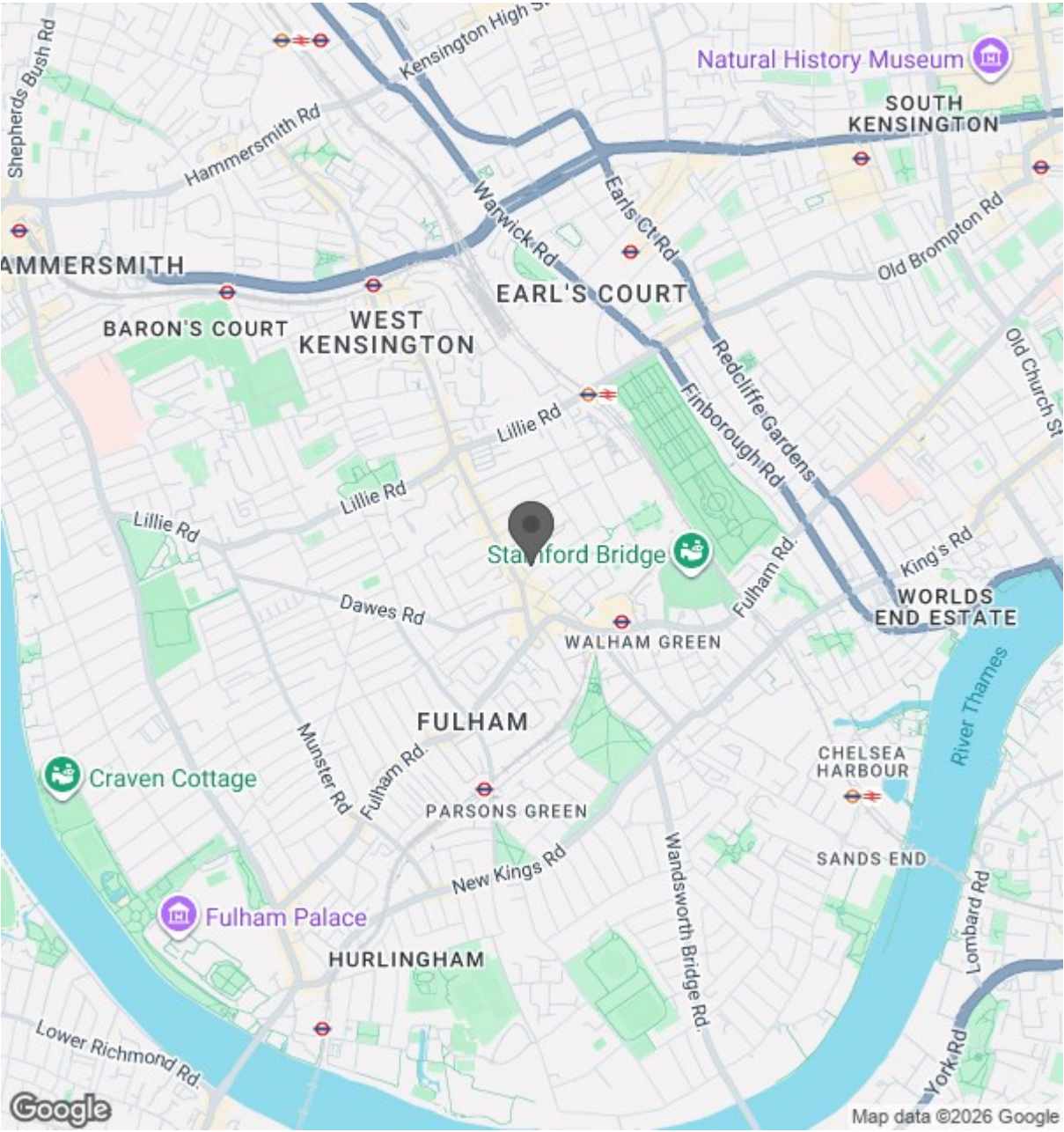
ANDREW SHAW
02073846790
andrew@brik.co.uk







Location



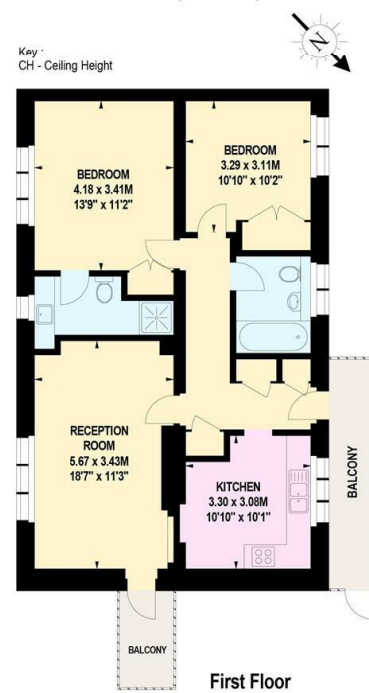
BRIK

0000
SQ FT

0000
SQ M

Walham Grove, SW6

Approximate gross internal area
79.80 sq m / 859 sq ft



Important notice Brik give notice that: all text, photographs and plans on these brochure are for guidance only and are not necessarily comprehensive; any areas, measurements or distances given are approximate; these details do not constitute part of an offer or contract and must not be relied upon as statements or representations of fact; it should not be assumed that the property has all the necessary planning permissions and building regulations approvals; we are not authorised to give any representations or warranties in relation to this property whatsoever; potential purchasers must satisfy themselves as to the correctness of all details by inspection or otherwise. Brik, 77 Parsons Green Lane, Fulham, London SW6 4JA Tel: 020 7384 6790 Email: hello@brik.co.uk