

King Street Cloisters, W6

£725,000

BRIK





King Street Cloisters

£725,000	2 Bed	979	0.95	E	£26,250
LEASEHOLD	APARTMENT	SQ FT	SQ M	COUNCIL TAX BAND	STAMP DUTY

A two double bedroom, modern apartment situated in the heart of Hammersmith.

A raised ground floor apartment in a quiet and discreet gated development located off King Street, Hammersmith, the property boasts a spacious open-plan kitchen/living area with stylish kitchen units and modern integrated appliances. Both bedrooms feature fitted wardrobes, with the principal bedroom benefiting from an en-suite bathroom as well as a second family bathroom.

King Street Cloisters offers a perfect blend of privacy and convenience. Ideally located just moments from Ravenscourt Park and the vibrant amenities of King Street, the area boasts an array of shops, cafés, and restaurants. Excellent transport links, including Hammersmith Station (District, Piccadilly, Hammersmith & City, and Circle lines), provide easy access to Central London and beyond. EPC rating B

- ✓ Two double bedrooms
- ✓ Two bathrooms (one en-suite)
- ✓ Large open plan kitchen/ reception room
- ✓ Raised ground floor
- ✓ Long lease (over 110 years)
- ✓ Central location
- ✓ Modern apartment in a converted period building
- ✓ No onward chain
- ✓ Approx. 979 sq ft (90.95 sqm)
- ✓ Council Tax band - E



Mathew Goss
ASSISTANT SALES MANAGER
30 YEARS EXPERIENCE
020 7384 6790
mathew@brik.co.uk



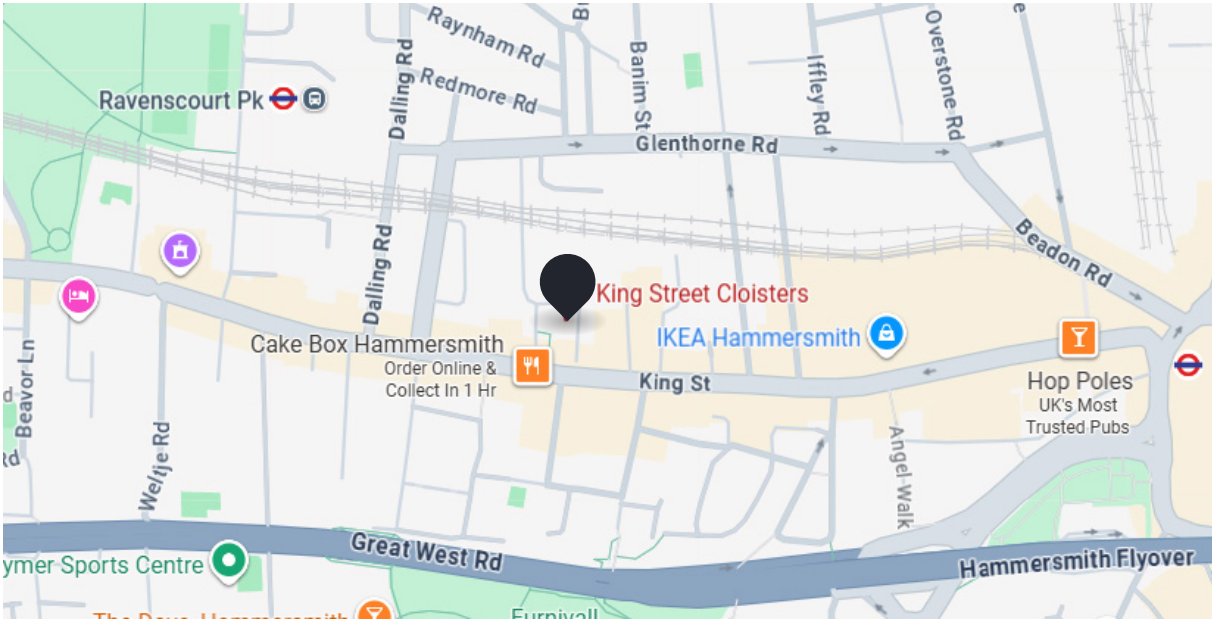




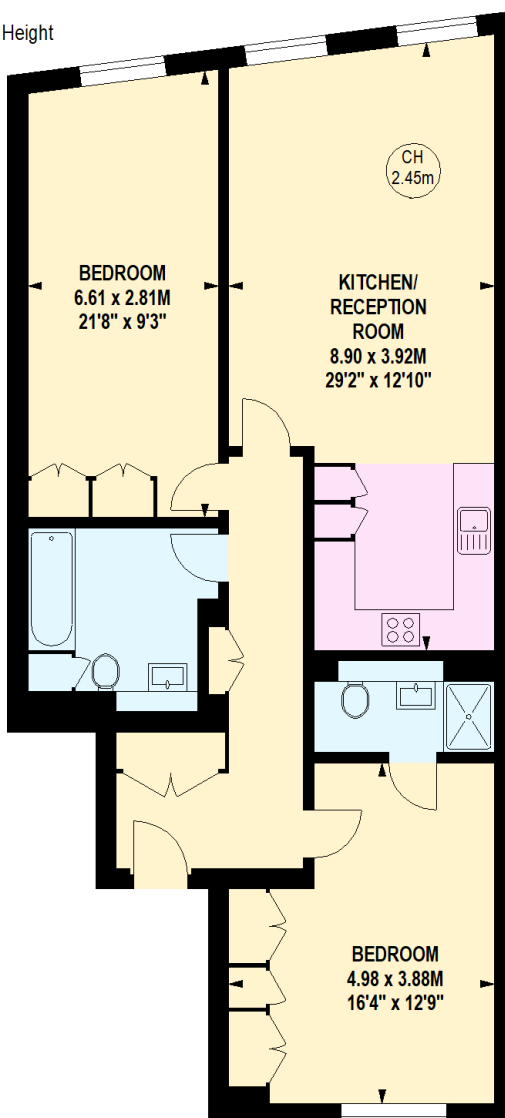


CLOSEST:

- ⊖ Ravenscourt Park (🚶 7 mins)
- ≠ Hammersmith (🚶 14 mins)
- ⬆ Ravenscourt Park (🚶 7 mins)



Key :
CH - Ceiling Height



Ground Floor