

Chipstead Street

Guide Price £1,975,000





Chipstead Street

£1,975,000	5 BED	0000	0000
Freehold	House - Terraced	SQ FT	SQ M

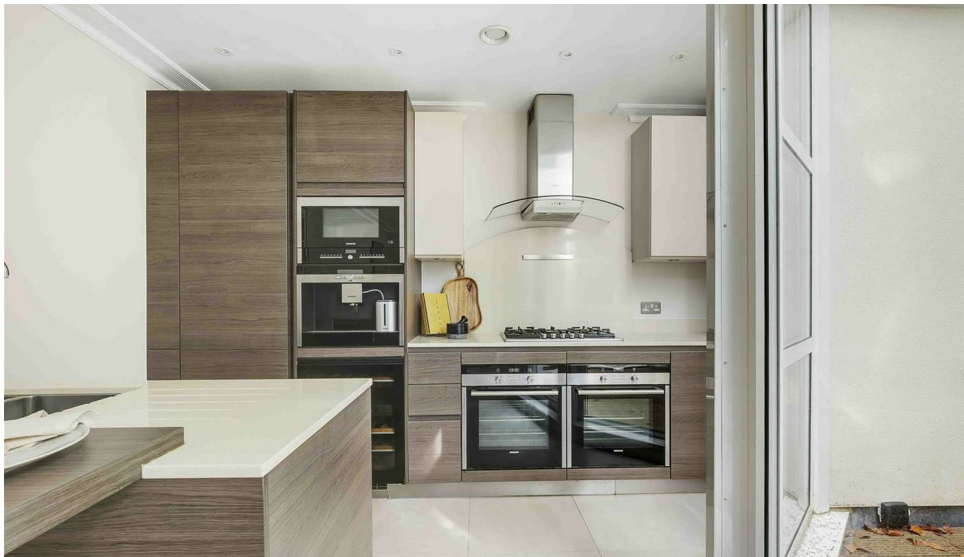
This outstanding house is arranged over four floors of well-balanced accommodation, there is a large kitchen/breakfast room with modern units, space for dining and access to a patio garden, a utility room and a study/5th bedroom on the lower ground floor. The ground floor consists of a light reception room with access to a patio area, a double bedroom and a shower room. The first floor has two double bedrooms both with en suite bathrooms and the top floor has an impressive principal bedroom with en suite, extensive fitted wardrobes and two balconies.

Chipstead Street, arguably one of the most desirable roads within the Peterborough Estate, favoured for being a pretty tree lined residential road offers a variety of local shops, cafes and restaurants within Parsons Green and along the New Kings Road. The nearest underground station is in Parsons Green itself (District Line, Zone 2). EPC rating - C

- 4/5 bedrooms
- 4 bathrooms
- Reception room
- Large kitchen/breakfast room
- Located on the Peterborough Estate
- 2 pation gardens & 2 separte balconies
- Rebuilt by bespoke house builders Nicholas King Homes in 2011.
- Freehold
- Approx. 1,884 sq ft (175 sq m)
- Council Tax band - G

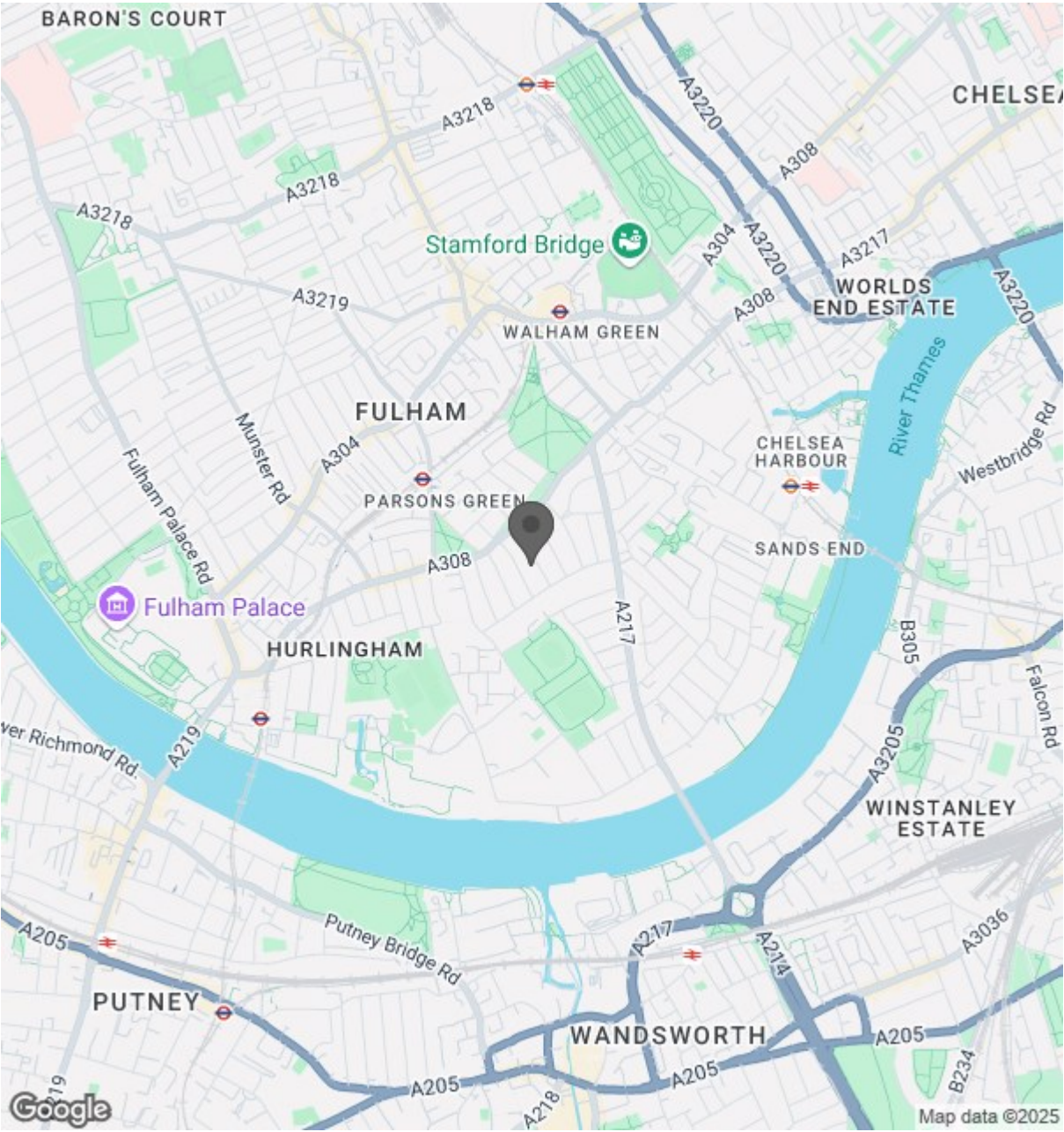
JAMES SIMS
020 7384 6790
james@brik.co.uk







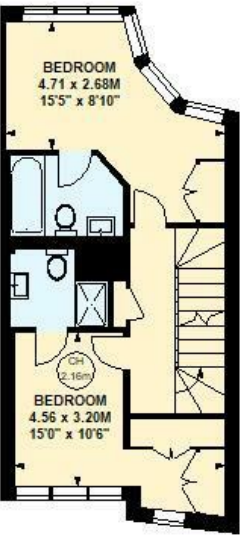
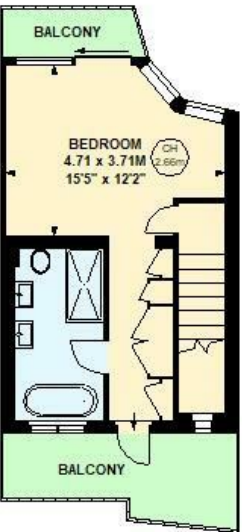
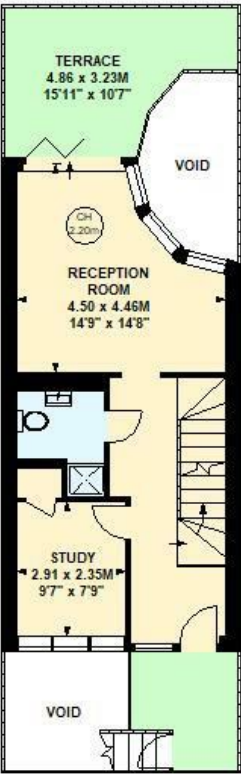
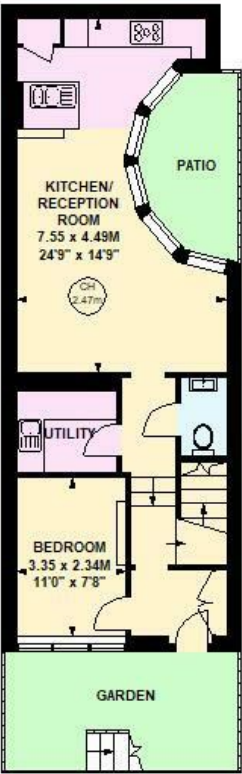
Location



Chipstead Street, SW6

Approximate gross internal area
175.02 sq m / 1884 sq ft

Key :
CH - Ceiling Height



Although every attempt has been made to ensure accuracy, all measurements are approximate.
This floorplan is for illustrative purposes only and not to scale.
Measured in accordance with RICS standards.