

# Bridgewater

£4,999 Per Month





# Bridgewater Avenue

£4,999 Per Month	2 BED Apartment	0000 SQ FT	0000 SQ M
------------------	--------------------	---------------	--------------

This flawless property, situated in the Kings Tower of the outstanding Chelsea Creek riverside development offers 2 double bedrooms, 2 bathrooms and private balcony. The property is brand new, has never been rented before and was purchased just months ago. Upon entering you will notice the property is finished to exacting standards with no expense spared on both the apartment itself and the furniture too. The master suite has a brand new TV bed, floor to ceiling windows, a fabulous walk in wardrobe area and beautiful en suite bathroom. The second bedroom is again a double, with floor to ceiling windows, built in wardrobe and direct access to the private balcony. The open plan living room has floor to ceiling patio doors, plenty of space for relaxing and a fabulous modern kitchen with Miele appliances and wine cooler.

The list of further benefits proves the fantastic lifestyle which is on offer to anyone lucky enough to live in the development, including: private cinema, exclusive access to the spa boasting swimming pool, sauna, steam room, treatment room and gymnasium, and residents' sky lounge and terrace on the 31st floor providing exceptional views of London. EPC rating B.

Kings Tower is located 0.3 miles from Imperial Wharf Overground Station, providing regular services to Clapham Junction, West Brompton and Shepherds Bush. Fulham Broadway London Underground station provides District Line services and is just 0.8 miles away.

- 24hr Concierge
- Residents Spa (sauna, swimming pool + steam room)
- Residents Gymnasium
- Sky Lounge + Terrace On The 31st Floor
- Parking Available With Separate Negotiation
- 2 Double Bedrooms
- 2 Bathrooms
- Private Balcony
- Never Rented Before
- Surrounded By Landscaped Gardens

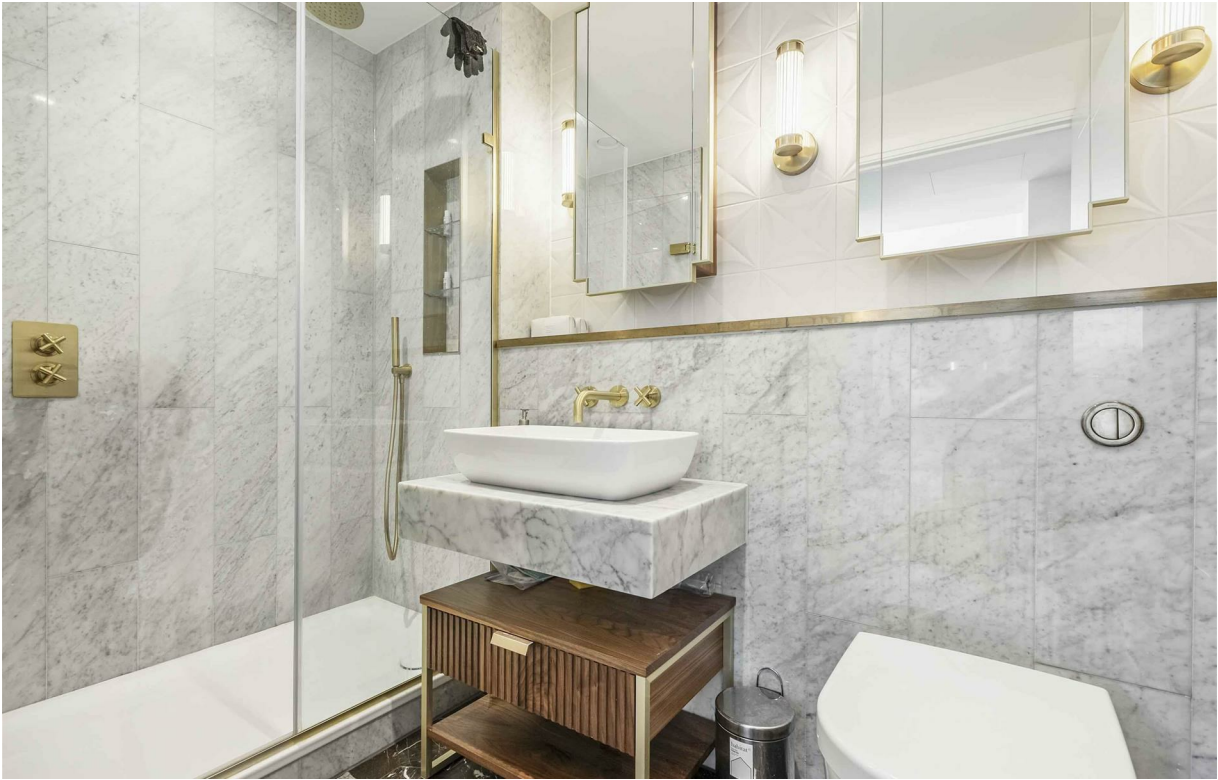
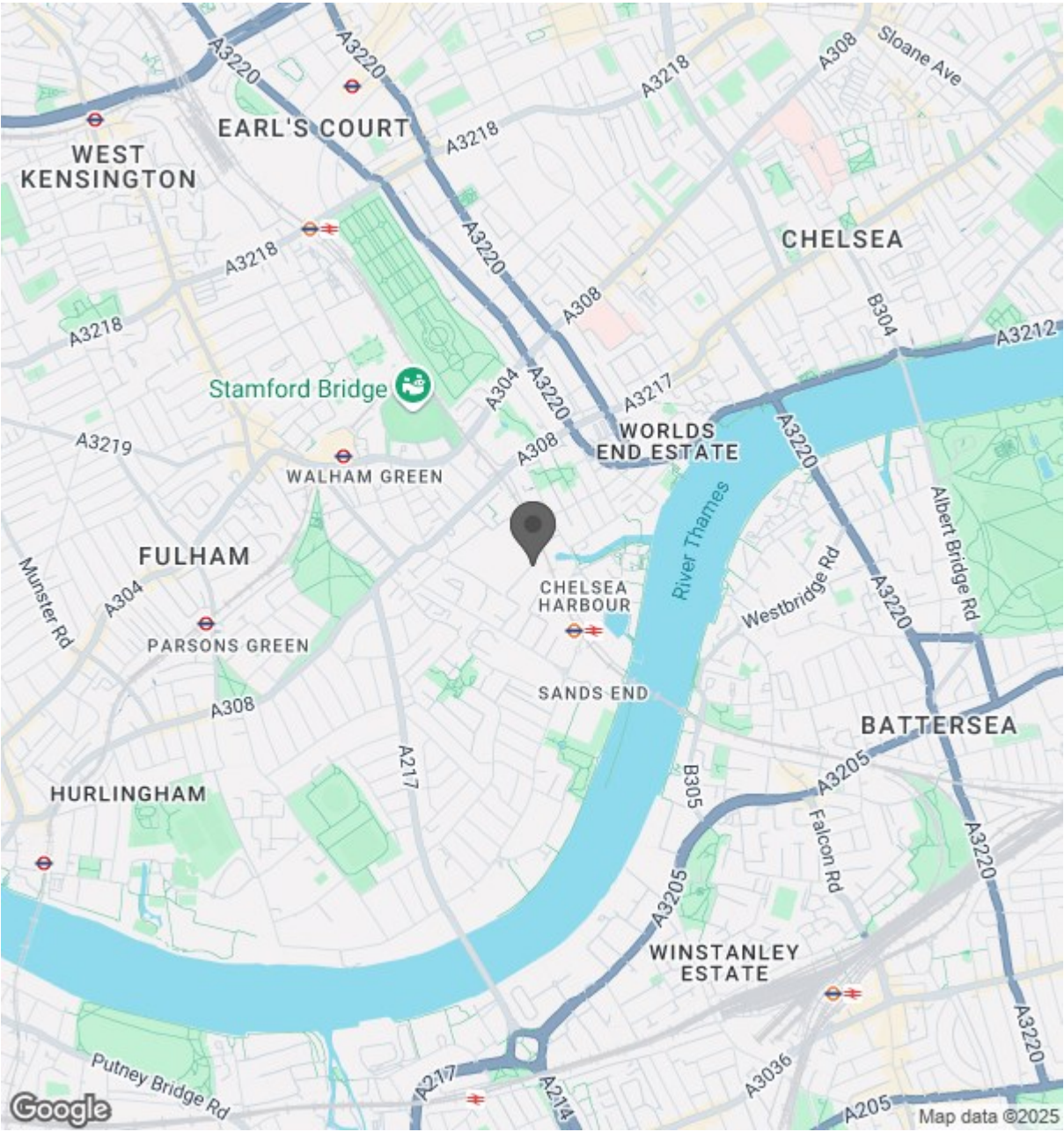
ANDREW SHAW  
02073846790  
andrew@brik.co.uk







Location



**Kings Tower, SW6**

Approximate gross internal area  
83.70 sq m / 901 sq ft



Key :  
CH - Ceiling Height



**Seventh Floor**

Although every attempt has been made to ensure accuracy, all measurements are approximate.  
This floorplan is for illustrative purposes only and not to scale.  
Measured in accordance with RICS standards.