

Dairy Close

£675,000



Dairy Close

£675,000
Leasehold

2 BED
Apartment

0000
SQ FT

0000
SQ M

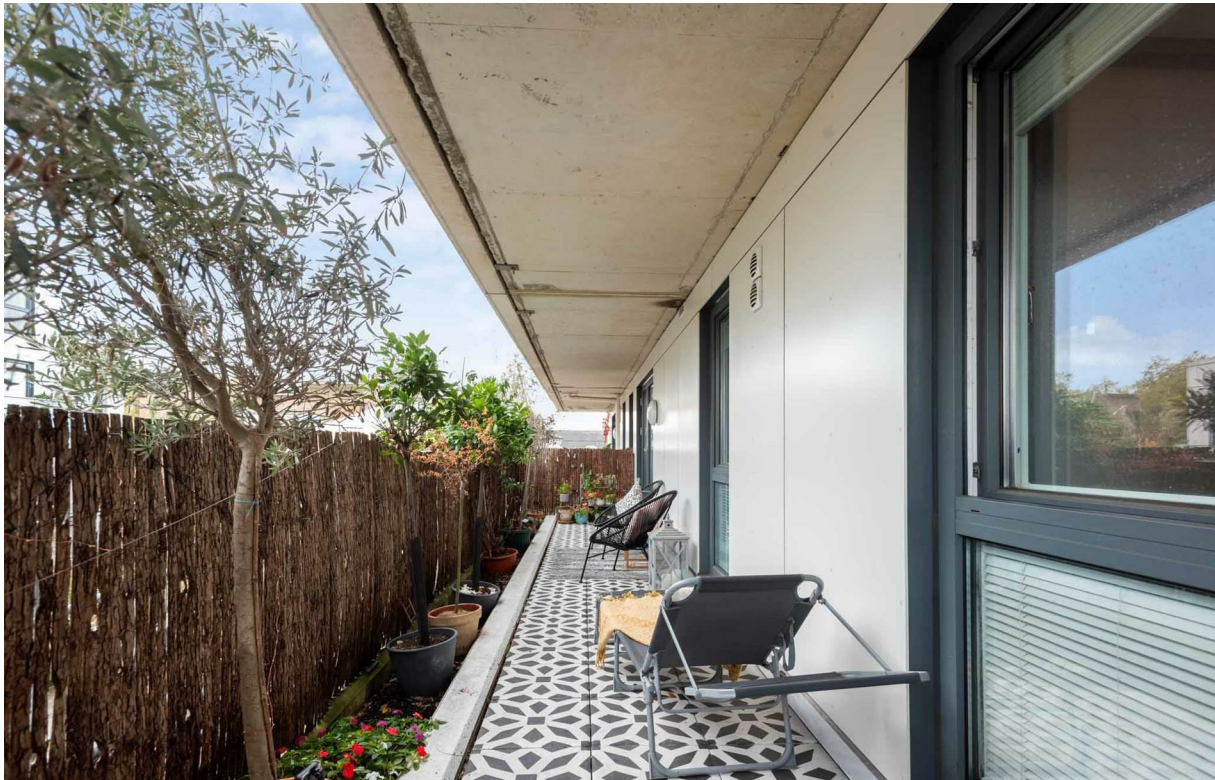
This stylish apartment comprises two double bedrooms, a modern bathroom, reception room and kitchen and a generous private balcony. All principle rooms offer floor to ceiling windows which allow light to flood in. The terrace is tiled and with bedding for planting. The building has a lift, access to a secure bike store, a concierge/porter service and there is potential for a secure parking space, however this is by separate negotiation with the management company.

Randall Court is very conveniently located just off Parsons Green Lane with Parsons Green underground (District line, Zone 2) just round the corner. The shops and amenities of both Fulham Road and New Kings Road are within five mintues walk.

- 2 Bedrooms
- Reception room
- Modern Kitchen
- Family bathroom
- Large private balcony
- Second floor (lift)
- Great condition
- Excellent location
- Approx. 657 sq ft (61 sq m)
- EPC rating: B

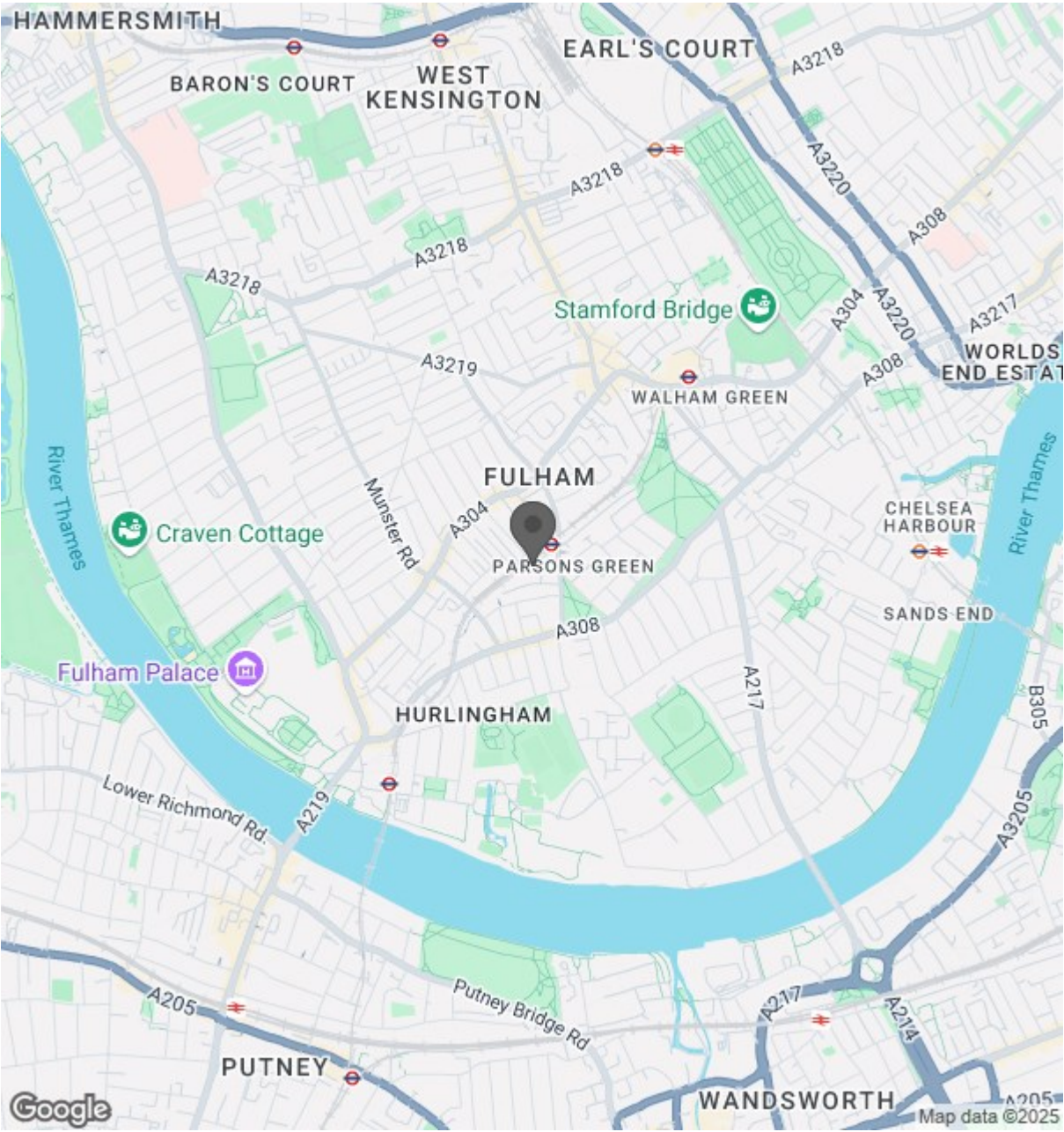
MATHEW GOSS
020 7384 6790
matthew@brik.co.uk

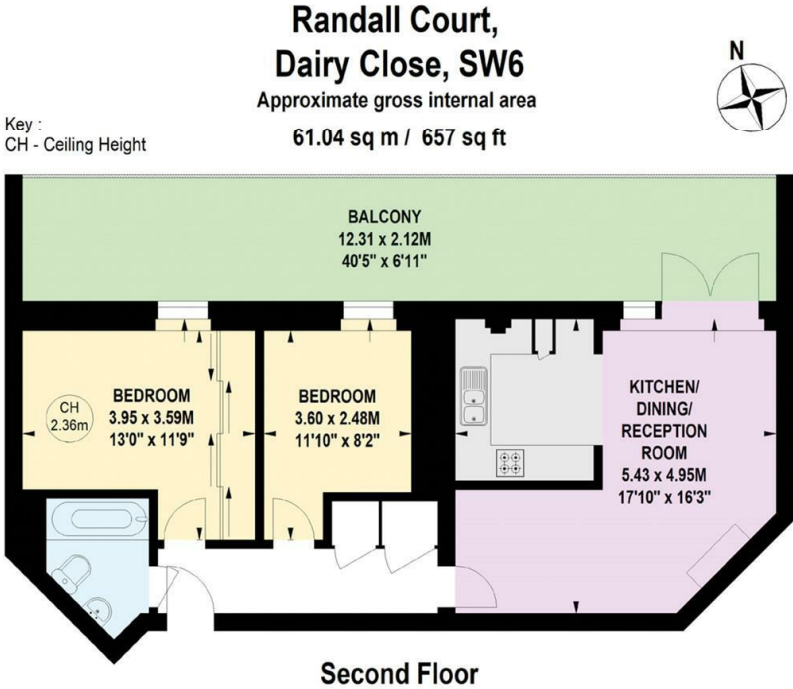






Location





Not to scale, for guidance only and must not be relied upon as a statement of fact.
All measurements and areas are approximate only