

Niton Street, SW6

£2,950,000

BRIK





Niton Street

£2,950,000 | 6 Bed | 3,236 | 300.62 | G | £267,750 (From 1st April 2025)
 FREEHOLD | HOUSE | SQ FT | SQ M | COUNCIL TAX | STAMP DUTY

An outstanding fully extended Victorian family home. Finished to an excellent specification and located in the desirable Bishop's Park area. Arranged over four floors and extending to over 3,200 sq ft (300.62 sq m), the bedrooms and living space have been implemented and balanced perfectly. The basement floor has a superb media room at the rear, utility room & separate storeroom, a modern shower room and a double bedroom with built in storage at the front. The ground floor comprises a formal double reception room, cloakroom, and, at the rear of the house, a wonderfully light extended kitchen breakfast room with integrated appliances, as well as providing a more informal living space. Bi fold doors lead onto an impressive 86ft (28m) private garden. The first floor has an elegant principal bedroom, with a built in wardrobe and substantial en-suite bathroom. A further two bedrooms, one with an en suite bathroom and roof terrace complete this floor. The top floor of the house has been converted to create two further double bedrooms and a separate modern family bathroom.

Niton Street is located close to the popular Thames Riverside Path and is only a short walk from the transport hub of Hammersmith (District, Piccadilly, Circle and Hammersmith & City Lines, Zone 2) & Barons Court underground station (District & Piccadilly Line, Zone 2), as well as being well served by buses. There are plenty of shops, including a new little Waitrose supermarket and restaurants very close to hand, such as the excellent Michelin starred River Café, Pizza Express and the popular Crabtree Pub, which is also very popular with locals. For recreational facilities, there is a Virgin Active gym, the Nuffield Health Club, and, of course Bishops Park and the superb Thames path which are all close by. The property is also within easy reach of some excellent schools, including Goldolphin & Latymer, St Paul's girls & St Paul's boys, Kensington Wade and Fulham Prep School. EPC rating -

- ✓ 6 bedrooms
- ✓ 5 bathrooms
- ✓ Double reception room
- ✓ Extended kitchen/breakfast room
- ✓ Media room
- ✓ Large private garden 86ft (28m)
- ✓ Freehold
- ✓ Utility/store room/GF cloakroom
- ✓ Approx 3,236 sq ft/300 sq m
- ✓ Council tax band - G



James Sims

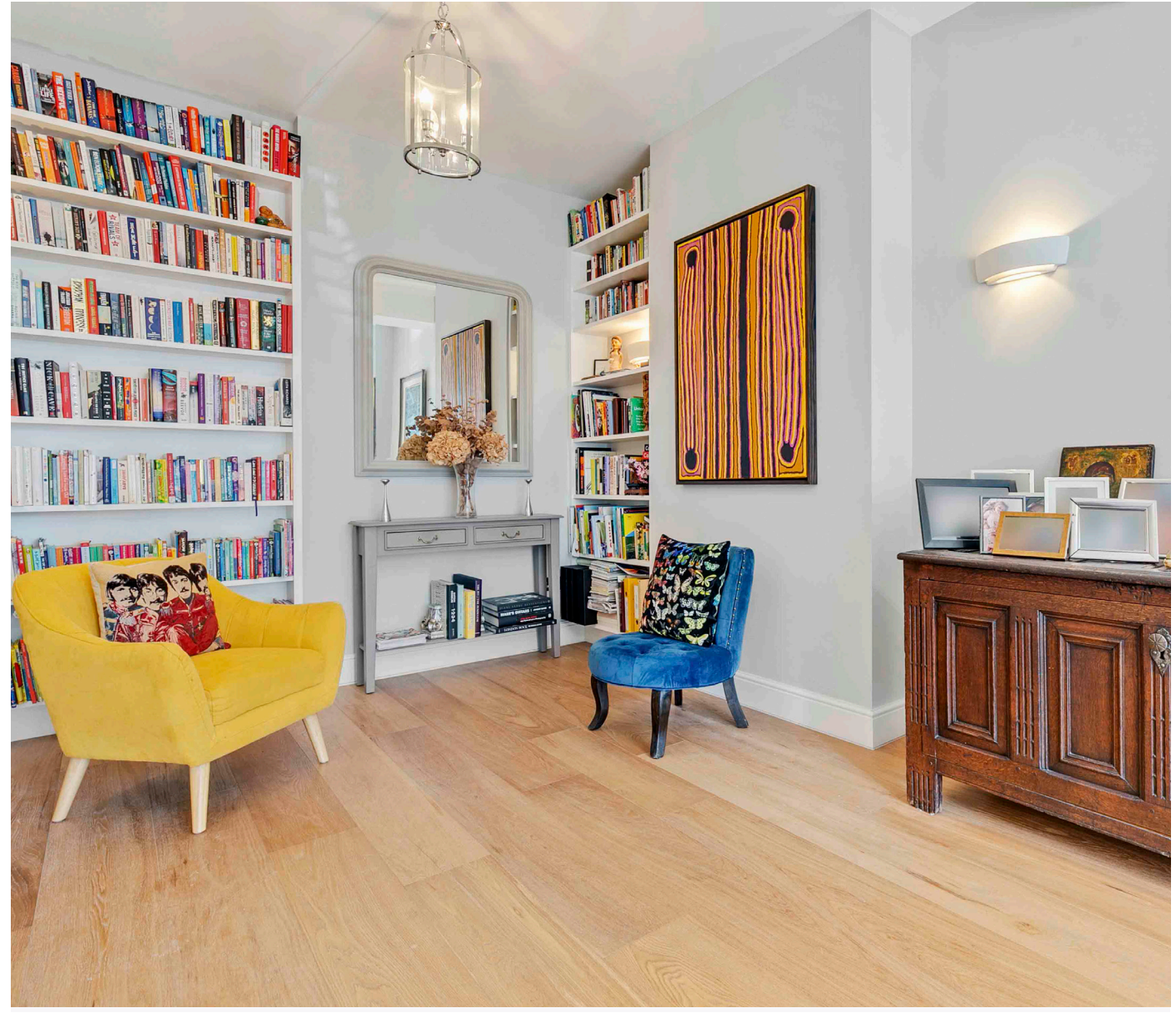
DIRECTOR
 17 YEARS EXPERIENCE

020 7384 6790

james@brik.co.uk

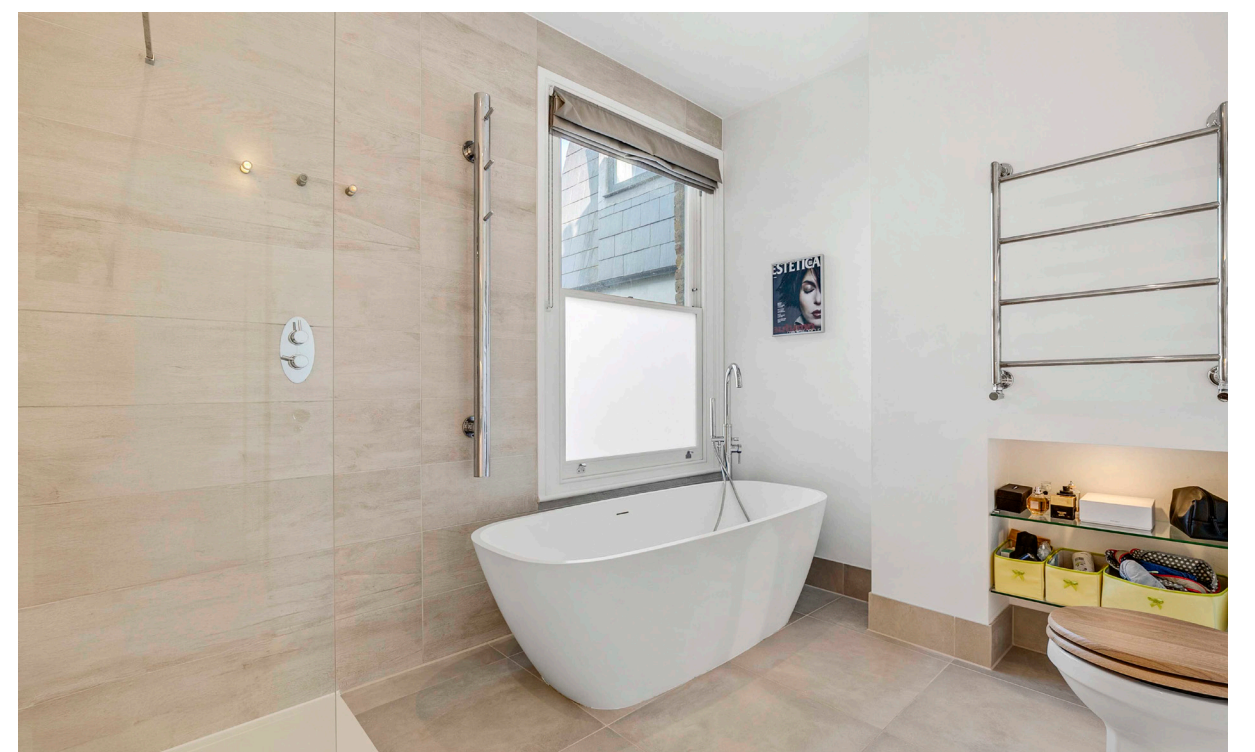
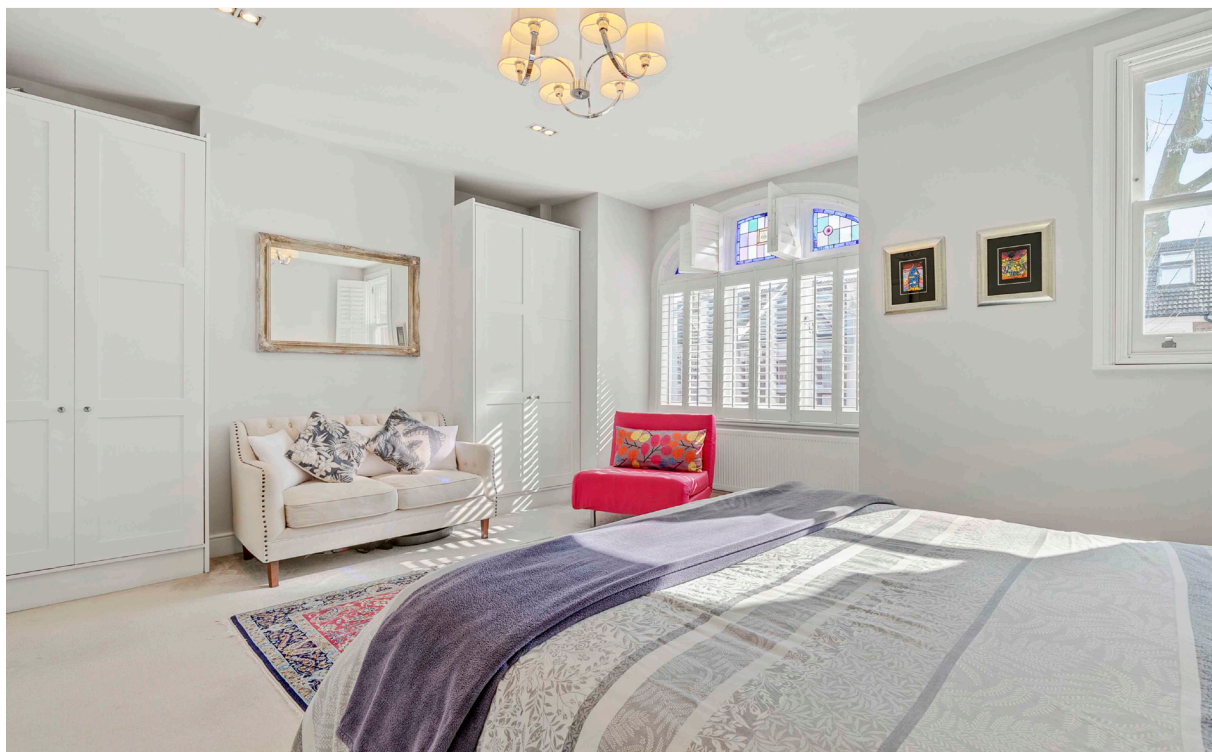


















FULHAM AREA GUIDE

Bishop's Park

The 'Bishop's Park' area is located on the south west border of Fulham, ideal for Tube links from Putney Bridge. The proximity of Bishops Park, Fulham Palace, the River and Putney Bridge tube go some way to offsetting the slightly out-of-the-way feel, but then many who buy here do so for that very reason. There's a more laid back feeling in the air, and parking is easier than more central areas of Fulham.

Gardens here are generally much larger than the Fulham average, and the houses are big too (over 4,000 sq ft in some cases), making this area extremely popular with families. Prices have rocketed in recent years, especially on the southern streets, but you still get more for your money than in Parsons Green.

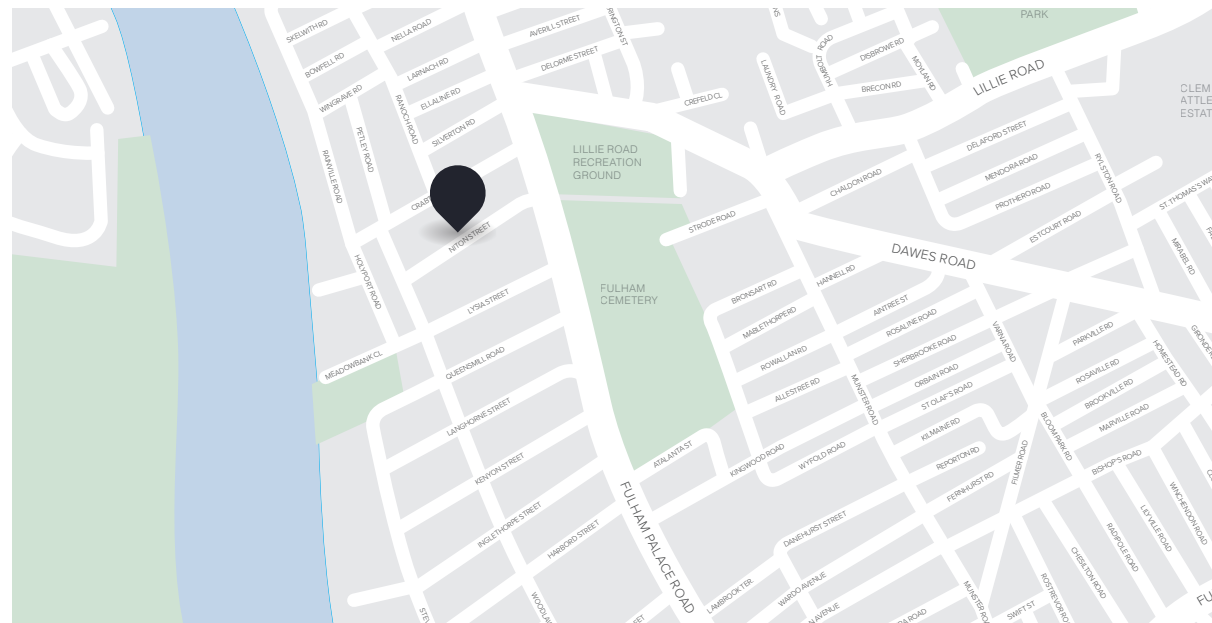
CLOSEST:

- 🚶 Putney Bridge (🚶 26 mins)
- 🚶 West Brompton (🚶 28 mins)
- 🚶 Eel Brook Common (🚶 28 mins)

KEY:

- Property location
- 'Bishop's Park' area of Fulham

[Read all our Fulham area guides here](#)





Lower Ground Floor

Ground Floor

First Floor

Second Floor