

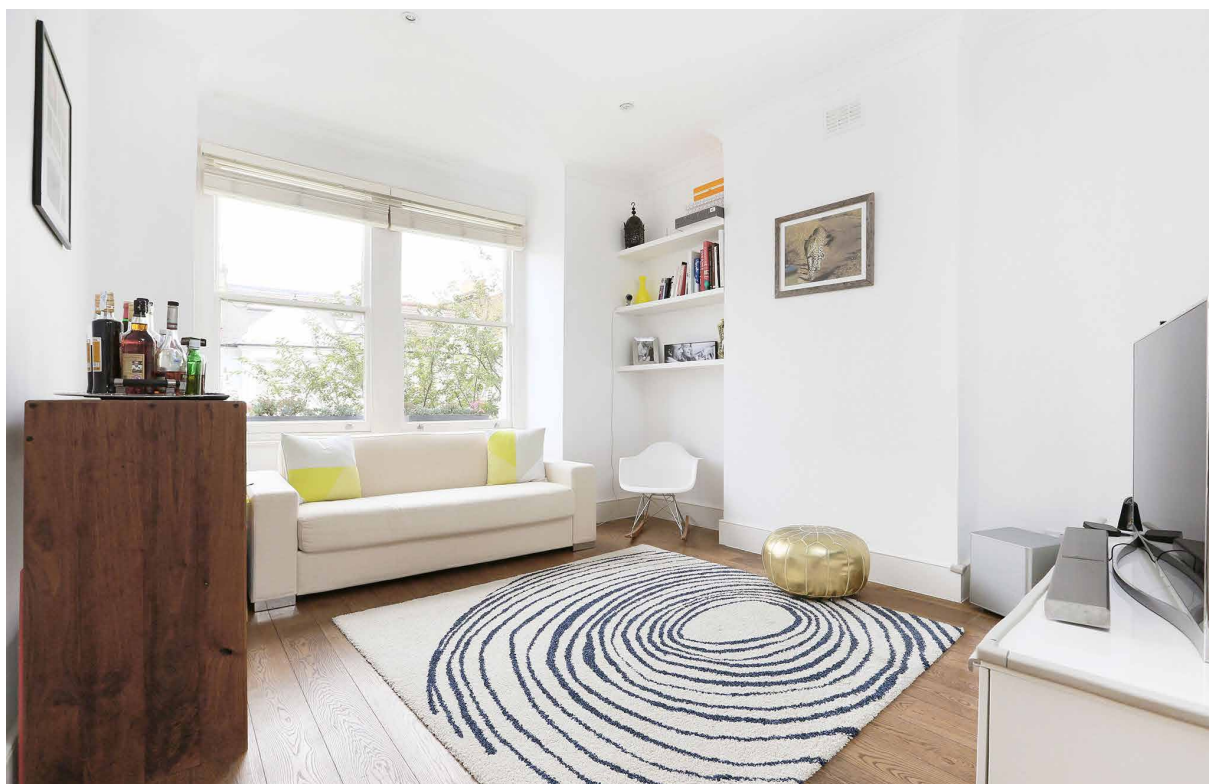
Gowan Avenue

£830,000

BRIK







Gowan Avenue

£830,000 LEASEHOLD	2 Bed FLAT	1,028 SQ FT	96 SQ M	E COUNCIL TAX	£29,000 STAMP DUTY
-----------------------	---------------	----------------	------------	------------------	-----------------------

An outstanding, wider than average, two double bedroom split level flat in a substantial converted Victorian house.

Arranged over the first and second floors, the flat has been recently refurbished and finished to a high standard, extending to almost 1,050 sq ft (96 sq m). On the first floor there is excellent entertaining space with a double reception room which can be separated with a full height sliding door, a modern white kitchen (which is partially open to the dining area), and the family bathroom. On the second floor there is a large master bedroom with a modern ensuite bathroom, and a second double bedroom. Planning permission was granted to extend the property with a front mansard extension, enabling the second floor to be configured with three double bedrooms, as well as adding a roof terrace to the rear of the building.

Gowan Avenue is one of the most in-demand roads in 'Munster Village' made up of predominately large freehold houses and maisonettes. It's also not far from the shops, restaurants and amenities of Fulham Road and there are several independent cafés and boutique shops close to hand on the Munster Road itself. The closest underground station is Parsons Green (District Line, Zone 2) which is a short walk away and you can catch regular buses from Fulham Palace Road north to the transport hub of Hammersmith (Piccadilly, District and Hammersmith & City Lines). Buses also run towards Chelsea and central London from the Fulham Road and the Thames riverside walk and the very popular Bishops Park is a real bonus being only a short walk away.

- ✓ 2 double bedrooms
- ✓ 2 bathrooms
- ✓ Double reception room
- ✓ Kitchen
- ✓ Wider than average
- ✓ Potential to extend (STPP)
- ✓ Long lease
- ✓ Great location
- ✓ Approx 1,028 sq ft (96 sq m)
- ✓ Council tax band - E
- ✓ EPC Rating - C



James Sims
 DIRECTOR
 17 YEARS EXPERIENCE
 020 7384 6790
 james@brik.co.uk





FULHAM AREA GUIDE

Munster Village

Serviced by some great bars, shops and restaurants, the Munster Village is an extremely popular part of Fulham, attracting buyers to a more affordable alternative to nearby Parsons Green.

There's a wide range of residential property, from smaller but perfectly formed Victorian cottages on Orbain Road to grander family homes on Gowan Avenue, whilst Danehurst Street attracts young professionals with its larger than average purpose built Victorian flats which come complete with their own front doors. With many green spaces nearby including the enchanting grounds of Fulham Palace, the Munster Village is an ever-popular location.

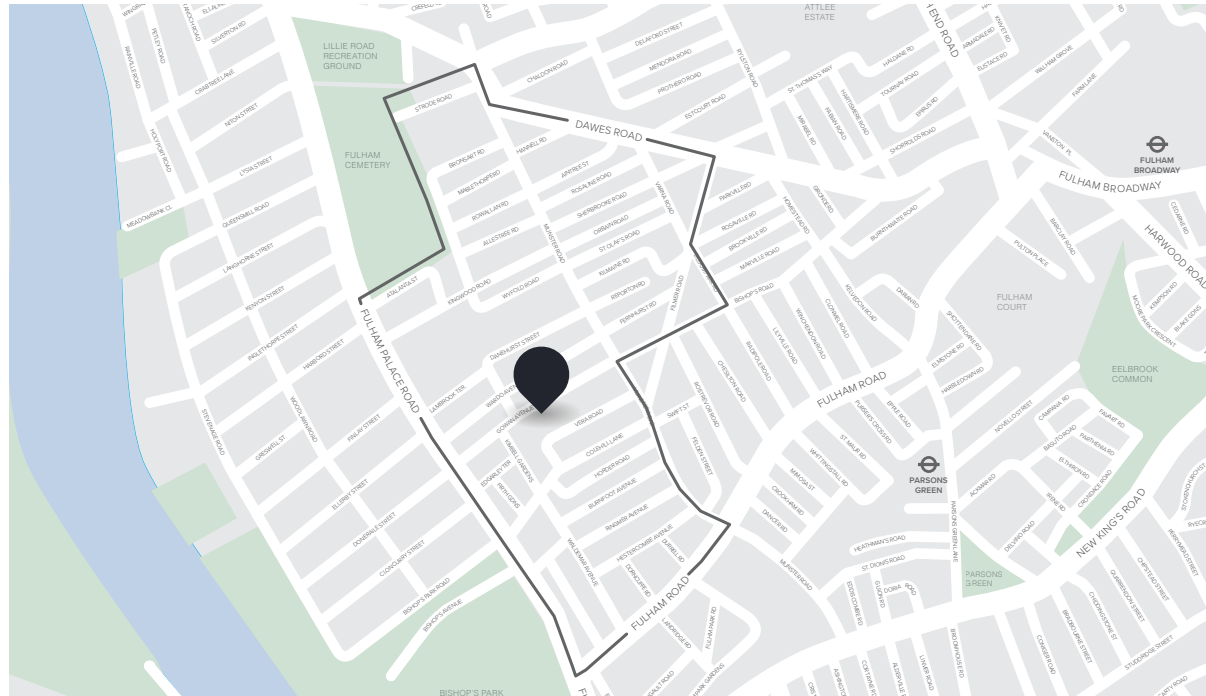
CLOSEST:

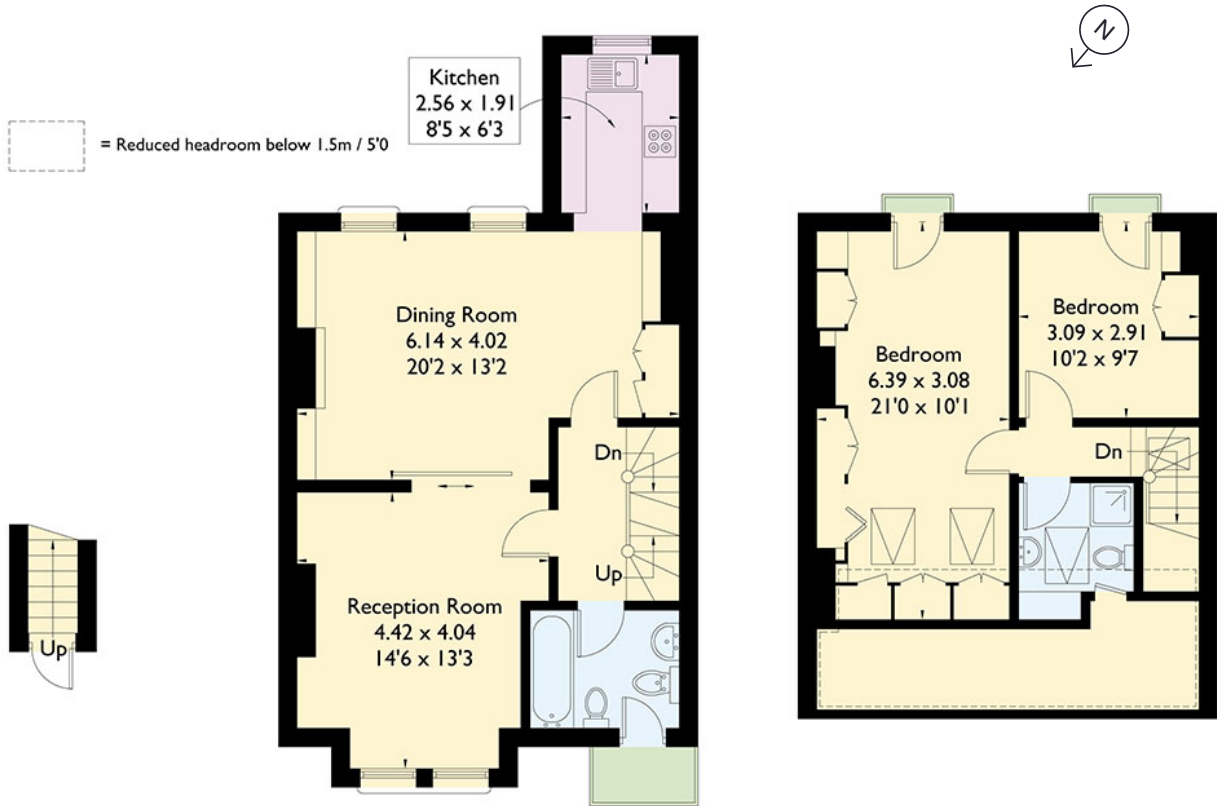
- 🚶 Parsons Green (14 mins)
- 🚶 West Brompton (27 mins)
- 🚶 Bishops Park (6 mins)

KEY:

- 📍 Property location
- ▭ 'Munster Village' area of Fulham

[Read all our Fulham area guides here](#)





Ground Floor

First Floor

Second Floor