

Fulham High Street, SW6

£595,000

BRIK









# Fulham High Street

£595,000	1 Bed	558	51	G	£8,500
LEASEHOLD	HOUSE	SQ FT	SQ M	COUNCIL TAX	STAMP DUTY

A unique and recently converted, one bedroom house/maisonette close to Bishops Park, Fulham Palace and a walk to Putney Bridge tube station.

This house/maisonette comprises an open plan living space, with a kitchen featuring a Siemens multi function oven, microwave combination oven and induction hob. On the first floor is a double bedroom with a built in wardrobe and a separate modern bathroom.

This modern development is in a great location, with both Bishops Park and the Thames riverside walk very close to hand.

You can easily walk across Putney Bridge to the large Putney High Street, where there are many restaurants and amenities as well as Fulham Road and Fulham High Street itself. Parsons Green is also close to hand. The closest underground station is Putney Bridge (District Line, Zone 2) which is a 3 minute walk away. EPC rating - C

- ✓ One bedroom
- ✓ Bathroom
- ✓ Modern development
- ✓ Own entrance
- ✓ Concierge & CCTV
- ✓ Leasehold house
- ✓ Air conditioning & underfloor heating
- ✓ Underground parking space available to purchase (under separate negotiation)
- ✓ Approx. 558 sq ft (51 sq m)
- ✓ Council Tax Band - G



James Sims

DIRECTOR  
17 YEARS EXPERIENCE

020 7384 6790

james@brik.co.uk











FULHAM AREA GUIDE

# Bishops Park

The ‘Bishop’s Park’ area is located on the south west border of Fulham, ideal for Tube links from Putney Bridge. The proximity of Bishops Park, Fulham Palace, the River and Putney Bridge tube go some way to offsetting the slightly out-of-the-way feel, but then many who buy here do so for that very reason. There’s a more laid back feeling in the air, and parking is easier than more central areas of Fulham.

Gardens here are generally much larger than the Fulham average, and the houses are big too (over 4,000 sq ft in some cases), making this area extremely popular with families. Prices have rocketed in recent years, especially on the southern streets, but you still get more for your money than in Parsons Green.

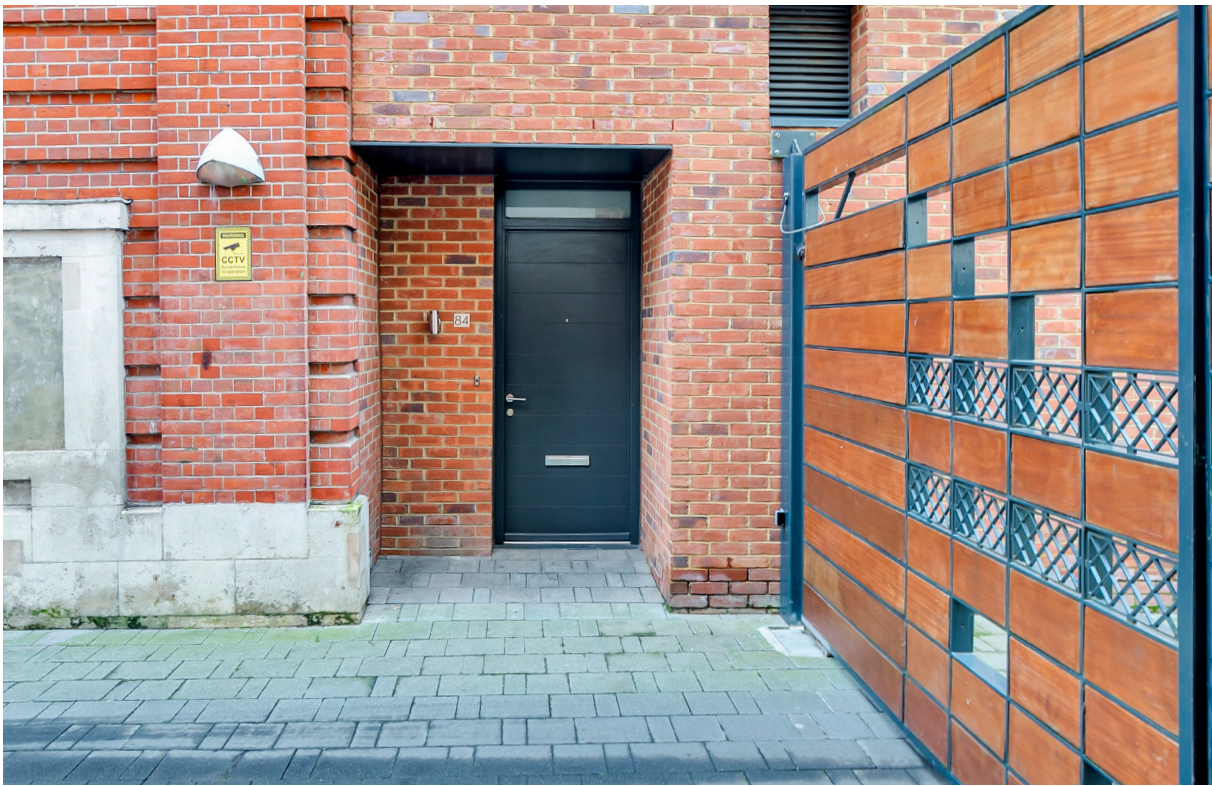
CLOSEST:

- 🚶 Putney Bridge ( 4 mins)
- 🚶 West Brompton ( 28 mins)
- 🌳 Eel Brook Common ( 20 mins)

KEY:

- Property location
- ‘Bishop’s Park’ area of Fulham

[Read all our Fulham area guides here](#)

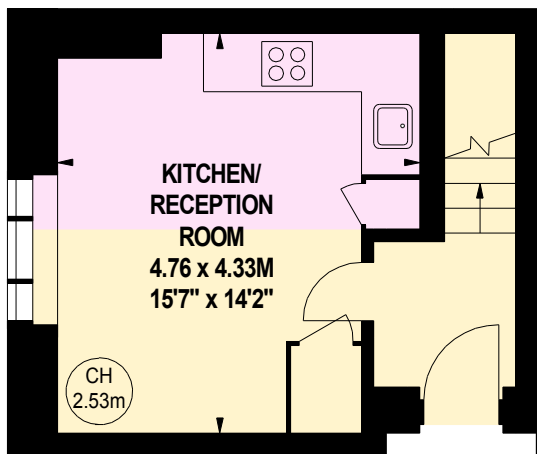




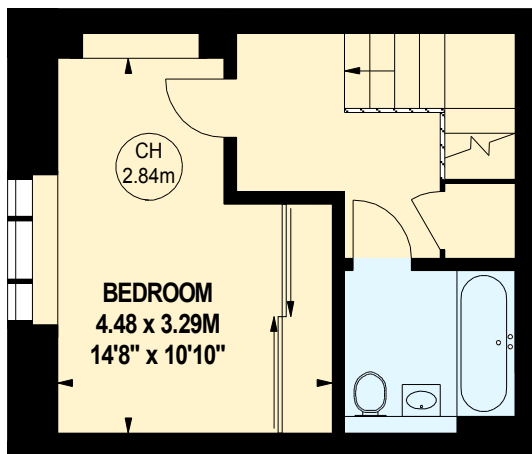
BRIK

558  
SQ FT

51  
SQ M



Ground Floor



First Floor

Important notice Brik give notice that: all text, photographs and plans on these brochure are for guidance only and are not necessarily comprehensive; any areas, measurements or distances given are approximate; these details do not constitute part of an offer or contract and must not be relied upon as statements or representations of fact; it should not be assumed that the property has all the necessary planning permissions and building regulations approvals; we are not authorised to give any representations or warranties in relation to this property whatsoever; potential purchasers must satisfy themselves as to the correctness of all details by inspection or otherwise. Brik, 77 Parsons Green Lane, Fulham, London SW6 4JA Tel: 020 7384 6790 Email: hello@brik.co.uk