

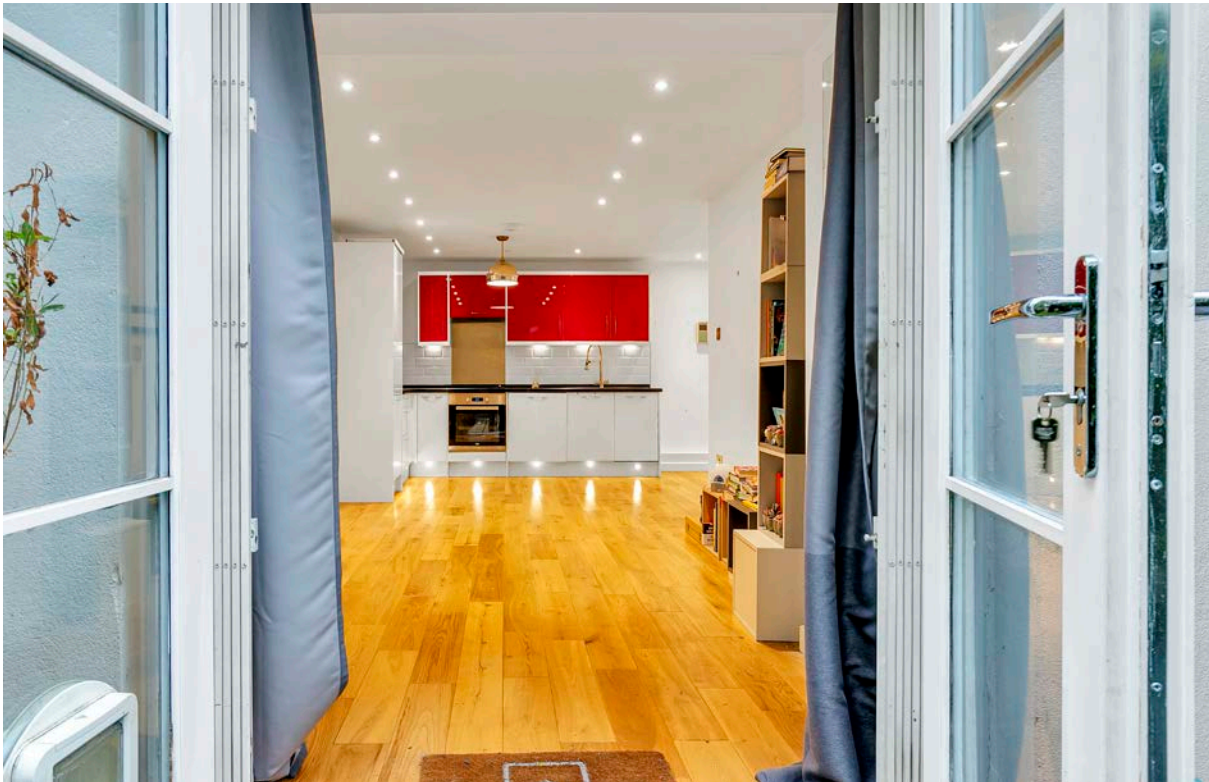
Brompton Park Crescent

£400,000

B R I K







Brompton Park Crescent

£400,000	1 Bed	379	35	D	£5,000 (FTB from 1st April 2025)
LEASEHOLD	FLAT	SQ FT	SQ M	COUNCIL TAX	STAMP DUTY

A well-presented and one-bedroom apartment in a quiet and very popular gated development benefiting from the residents-only gym, swimming pool, sauna and steam room.

The apartment itself is on the ground floor and comprises an open planned reception room with a modern kitchen and direct access to a patio garden & communal garden, a bedroom and a modern bathroom. There is an allocated parking space conveniently located next to the patio garden.

- ✓ One-bedroom apartment
- ✓ Allocated parking space
- ✓ Access to pool & gym
- ✓ Good condition
- ✓ Ground floor
- ✓ Gated development
- ✓ EPC – D rating
- ✓ Close to Earls Court and Fulham Broadway

Brompton Park Crescent is a private gated development and is in a highly convenient location being only a short walk to the plethora of shops, cafes and restaurants of Fulham Broadway (Underground, District line Zone 2) and the overground (and additional underground station) of West Brompton (London Overground & National Rail, District Line, Zone 2)



Mathew Goss
SENIOR SALES ASSOCIATE
25 YEARS EXPERIENCE
020 7384 6790
mathew@brik.co.uk







FULHAM AREA GUIDE

West Brompton

“West Brompton” lies between North End Road, home to a popular and vibrant street market selling fruit & veg at knock-down prices, and one of the finest cemeteries in the country, Brompton Cemetery to the East, home to thirteen holders of the Victoria Cross and the location for various films including Golden Eye and Johnny English.

West Brompton is a lovely residential spot nestled close to Earls Court and Fulham Broadway. Both the vibrant shops and market of North End Road and the restaurants and cinema of Fulham Broadway are a 5 minute walk away.

Whilst being in the heart of Fulham, you are also a stone’s throw from Brompton Cemetery with its historical beauty and peaceful atmosphere. It’s the perfect place for a walk or run, and home to West London’s lively parakeets.

The transport links in the area are outstanding. West Brompton (Zone 2, District line) is a short walk with quick interchange at Earls Court for the Piccadilly line into central London. There are also easy bus routes into Kensington or Hammersmith.

CLOSEST:

- Fulham Broadway (0.2 miles)
- West Brompton (0.3 miles)
- Earls Court Station (0.5 miles)

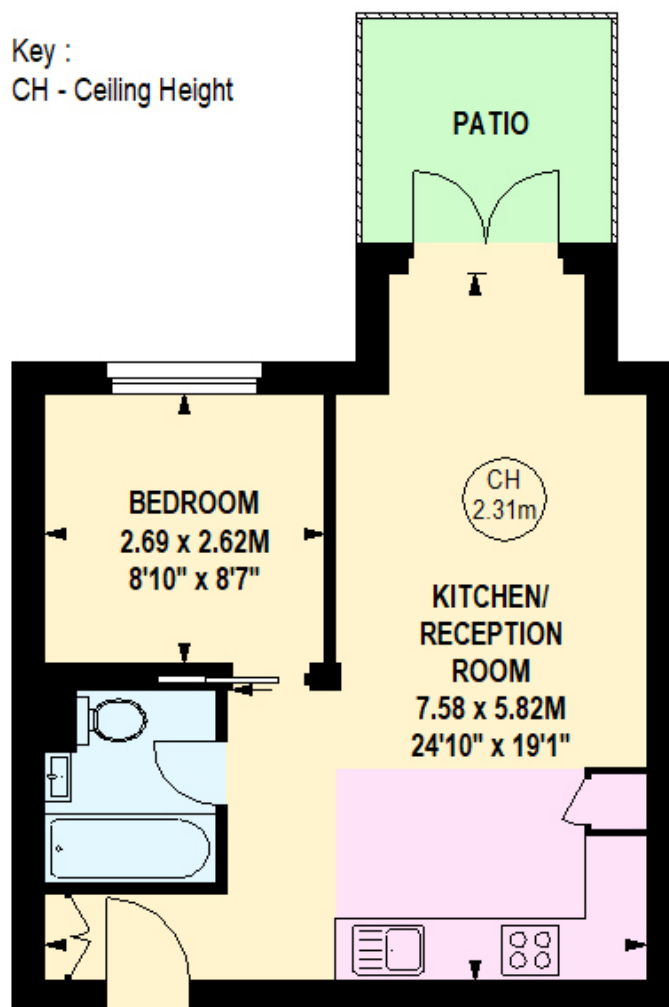
KEY:

- Property location
- ‘West Brompton’ area of Fulham

[Read all our Fulham area guides here](#)



Key :
CH - Ceiling Height



Ground Floor