

Homestead Road

£2,000,000

BRIK







Homestead Road

£2,000,000 | 4/5 Bed | 1,874 | 174 | G | £163,250
 FREEHOLD | HOUSE | SQ FT | SQ M | COUNCIL TAX | STAMP DUTY

A beautifully presented, four storey Victorian family home that has been recently refurbished to a high standard.

The raised ground floor has a light and spacious double reception room with wooden floors and feature fireplaces, a useful study/5th bedroom with direct access to the patio garden.

The lower ground floor has a stunning bespoke Modulnova kitchen with plenty of space for dining and play area, a WC and access to the lower courtyard garden via corner sliding patio doors. The first floor comprises the principal bedroom to the front, another large double bedroom and a modern family bathroom. On the top floor there are further two bedrooms and a large shower room.

Homestead Road is an attractive residential road, within easy walking distance of both Fulham Broadway (the busy centre of Fulham) and Parsons Green, providing residents with a choice of superb shopping and recreational facilities, including plenty of independent cafes, boutique shops, a cinema, David Lloyd (gym) and a large Waitrose supermarket close to hand.

The closest underground stations are Parsons Green and Fulham Broadway (both District Line, Zone 2) where you can also catch a variety of bus lines that run from Fulham Broadway towards Chelsea and Central London. EPC rating - C

- ✓ 4 bedrooms
- ✓ 2 Bathrooms
- ✓ Double reception room with high ceilings
- ✓ Stunning Kitchen/Breakfast room
- ✓ Study/5th bedroom
- ✓ Separate WC
- ✓ Excellent entertaining space
- ✓ Recently refurbished
- ✓ Approx. 1,874 sq ft (174 sq m)
- ✓ Council tax band - G



Mathew Goss

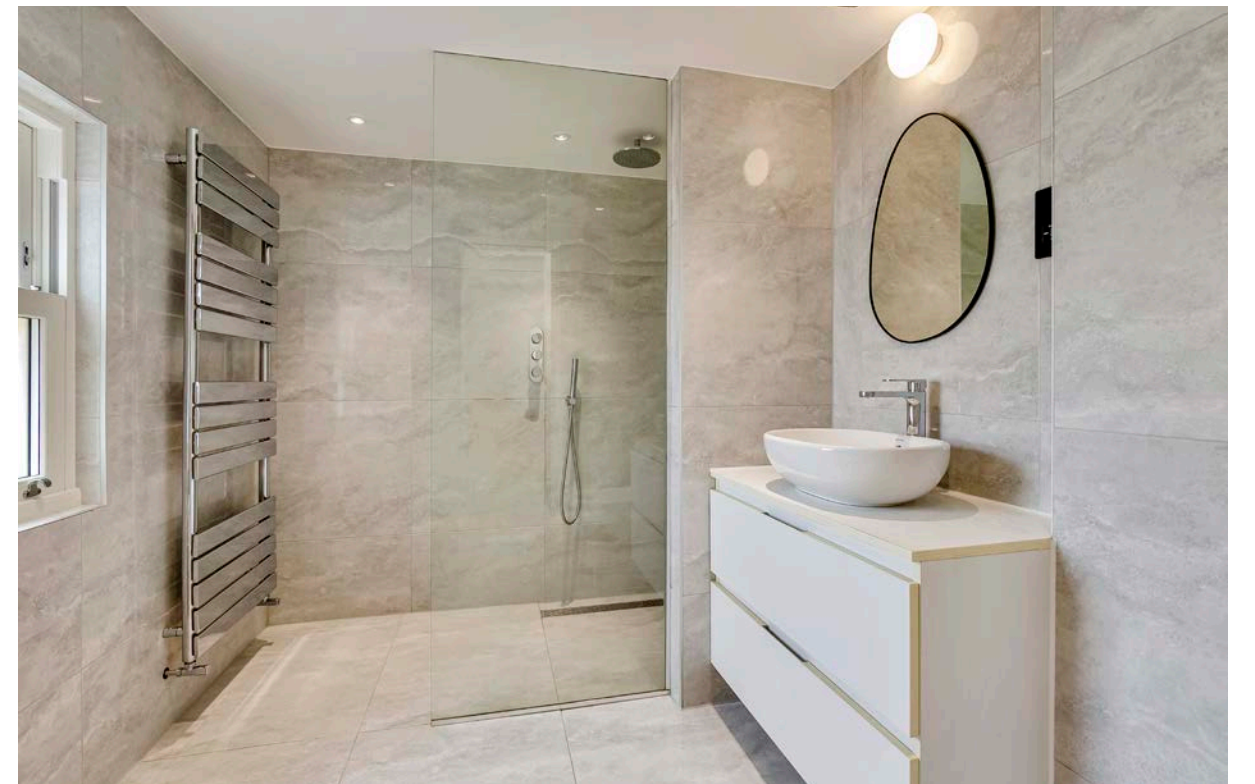
SENIOR SALES ASSOCIATE
 25 YEARS EXPERIENCE

020 7384 6790

mathew@brik.co.uk









FULHAM AREA GUIDE

The Villes

For couples and new families the 'Villes' – a group of four parallel streets all ending in 'ville' – is a great place to start family life in Fulham.

These tree-lined streets filled, with three to four bedroom Victorian houses, continue to be the stepping stone between a flat and the larger Fulham family homes. Although these roads used to be somewhat better value than others close by, that price now really only applies to Parkville and perhaps Rosaville, if at all. Marville and Brookville are now both extremely sought after, with fully extended houses attracting hordes of buyers.

Their equidistant location from both Parsons Green and Fulham Broadway make them convenient for either and both are only a short stroll away. Whilst Homestead road to the East is a major cut through these roads sit in a relatively quiet backwater.

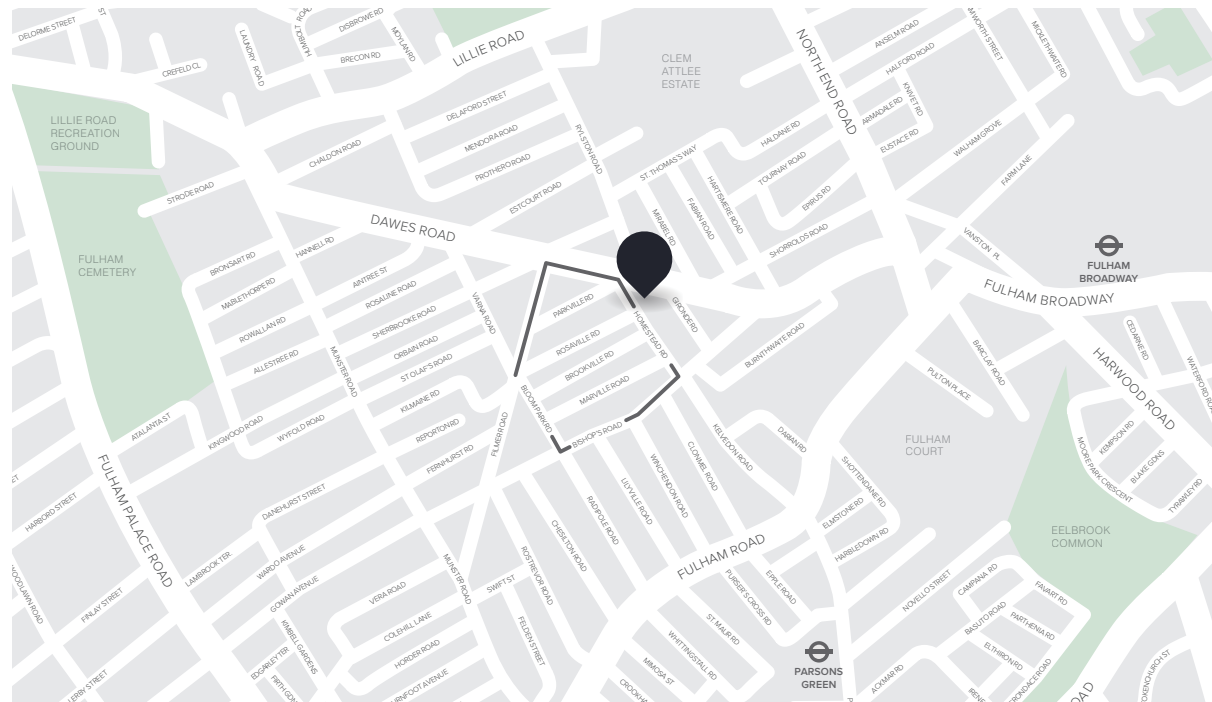
CLOSEST:

- 🚶 Parsons Green (11 mins)
- 🚶 West Brompton (12 mins)
- 🚶 Eel Brook Common (12 mins)

KEY:

- 📍 Property location
- 'Central Fulham North' area of Fulham

[Read all our Fulham area guides here](#)





Lower
Ground Floor

Raised
Ground Floor

First Floor

Second Floor