

Filmer Road

£2,000,000

BRIK







Filmer Road

£2,000,000 FREEHOLD	4 Bed HOUSE	2,078 SQ FT	193 SQ M	F COUNCIL TAX	£193,250 STAMP DUTY
------------------------	----------------	----------------	-------------	------------------	------------------------

A stylish and very attractive Edwardian terrace house. Arranged over four floors and extending to in excess of 2,000 sq ft (193 sq m).

This family home is in a great location, close to Fulham Road and only a short walk from Parsons Green. These row of houses are wider than average compared with typical Fulham houses of comparable size, offering generous room sizes, high ceilings and large sash windows.

The ground floor is open plan and comprise a front reception room, with built in storage and a period fireplace. There is an extended modern kitchen to the rear of the house, with an island, integrated appliances and plenty of space for dining. Bi folding doors lead out on to a beautifully designed South East facing private garden which is ideal for entertaining.

The basement floor has a family room, separate utility room with integrated appliances, a bespoke open wine wall/storage and a double bedroom with ample storage and a 'Jack and Jill' style shower room. On the first floor are two good size double bedrooms, a large family bathroom and separate W.C. Whilst on the top floor there is a large and bright master bedroom with an ensuite bathroom room.

This home is presented in excellent condition and offers plenty of light throughout the house. - EPC rating D

- ✓ 4 double bedrooms
- ✓ 3 bathrooms
- ✓ Reception room
- ✓ Modern extended kitchen
- ✓ Family room
- ✓ South East private garden
- ✓ Separate Utility
- ✓ Great location
- ✓ Approx 2,078 sq ft (193 sq m)
- ✓ Let on long term AST- investors only



James Sims

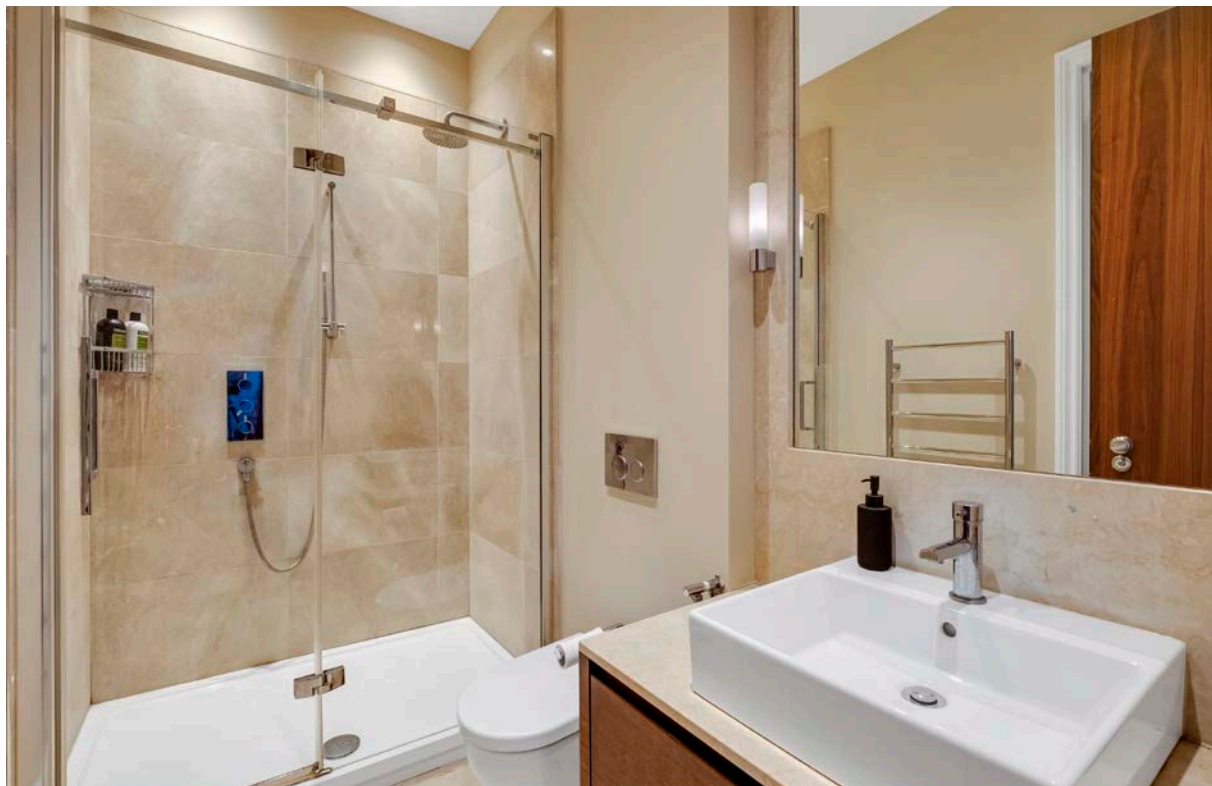
DIRECTOR
17 YEARS EXPERIENCE

020 7384 6790

james@brik.co.uk









FULHAM AREA GUIDE

Central Fulham North

There's a wide range of property here, from the beautiful semi-detached 'villas' on the East side of Lilyville Road, to the flats on Rostrevor Road and Radipole Road. In general the houses are slightly larger than those in Parsons Green (with the exception of the Lion houses in the Peterborough Estate) and can reach up to 3000 sq ft with basement.

Fulham Road itself is the focus of the action – with its cafes, restaurants and bus routes – but Parsons Green is also very nearby. This really is the heart of residential Fulham and has some of the most sought after roads in the area, in terms of value, size and quality

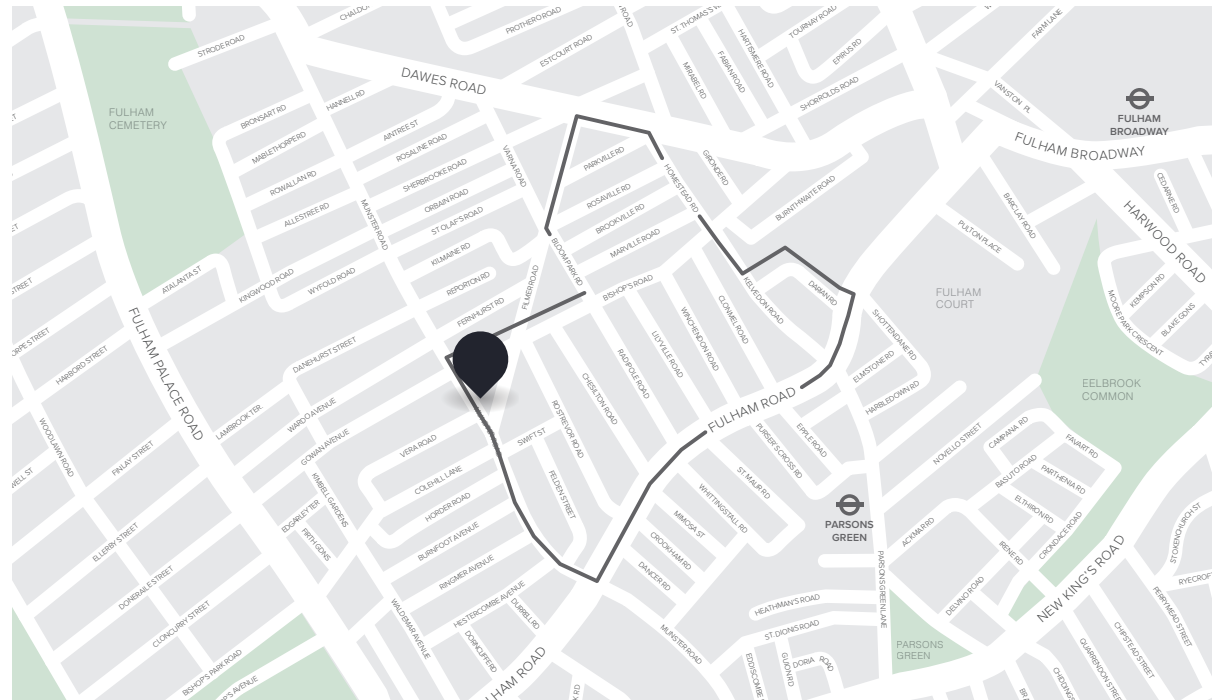
CLOSEST:

- 🚶 Parsons Green (9 mins)
- 🚶 West Brompton (19 mins)
- 🚶 Parsons Green (11 mins)

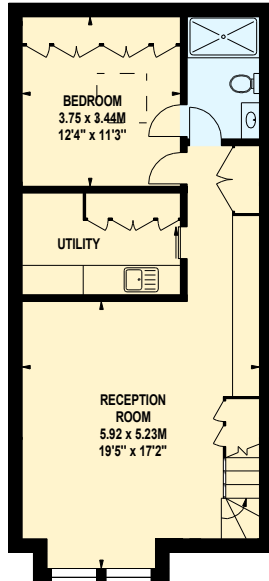
KEY:

- 📍 Property location
- 'Central Fulham North' area of Fulham

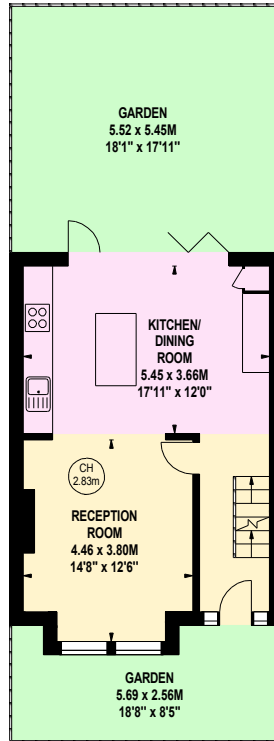
[Read all our Fulham area guides here](#)



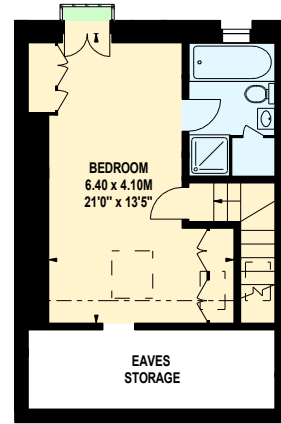
Key :
CH - Ceiling Height



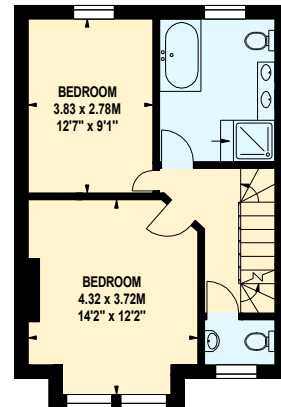
Lower Ground
Floor



Ground Floor



Second Floor



First Floor

