

Eardley Crescent

£2,600 Per Month





Eardley Crescent

£2,600 Per
Month

2 BED
Flat

0000
SQ FT

0000
SQ M

The property is situated on the second floor and offers in excess of 586 sq ft of living space. The property comprises of one bedroom with an ensuite bathroom, a second double bedroom and a family bathroom. There is a bright and spacious living room and a separate kitchen. There are wooden floors throughout the property. Energy rating c.

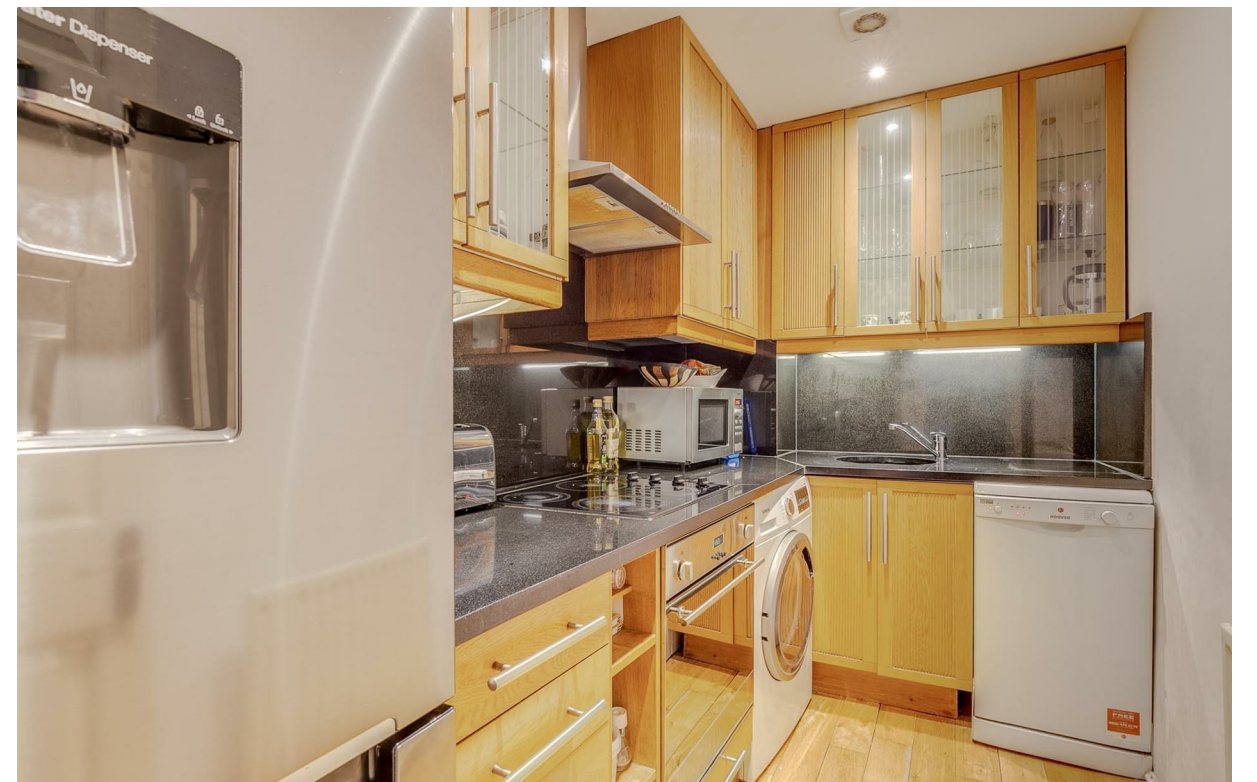
The property is situated just a few minutes away from Earls Court Road tube station and it is conveniently located close to transport links of West Brompton and Earls Court, giving occupants access to the City and throughout London. A short walk away from an array of amenities such as pubs, local bars, restaurants and shops.

- Two double bedrooms
- Two bathrooms (one en suite)
- Available: 13/10/2024
- Separate kitchen
- Furnished
- Excellent transport links
- Second floor flat
- 586 Sq Ft
- Wooden floors throughout

ANDREW SHAW

02073846790

andrew@brik.co.uk

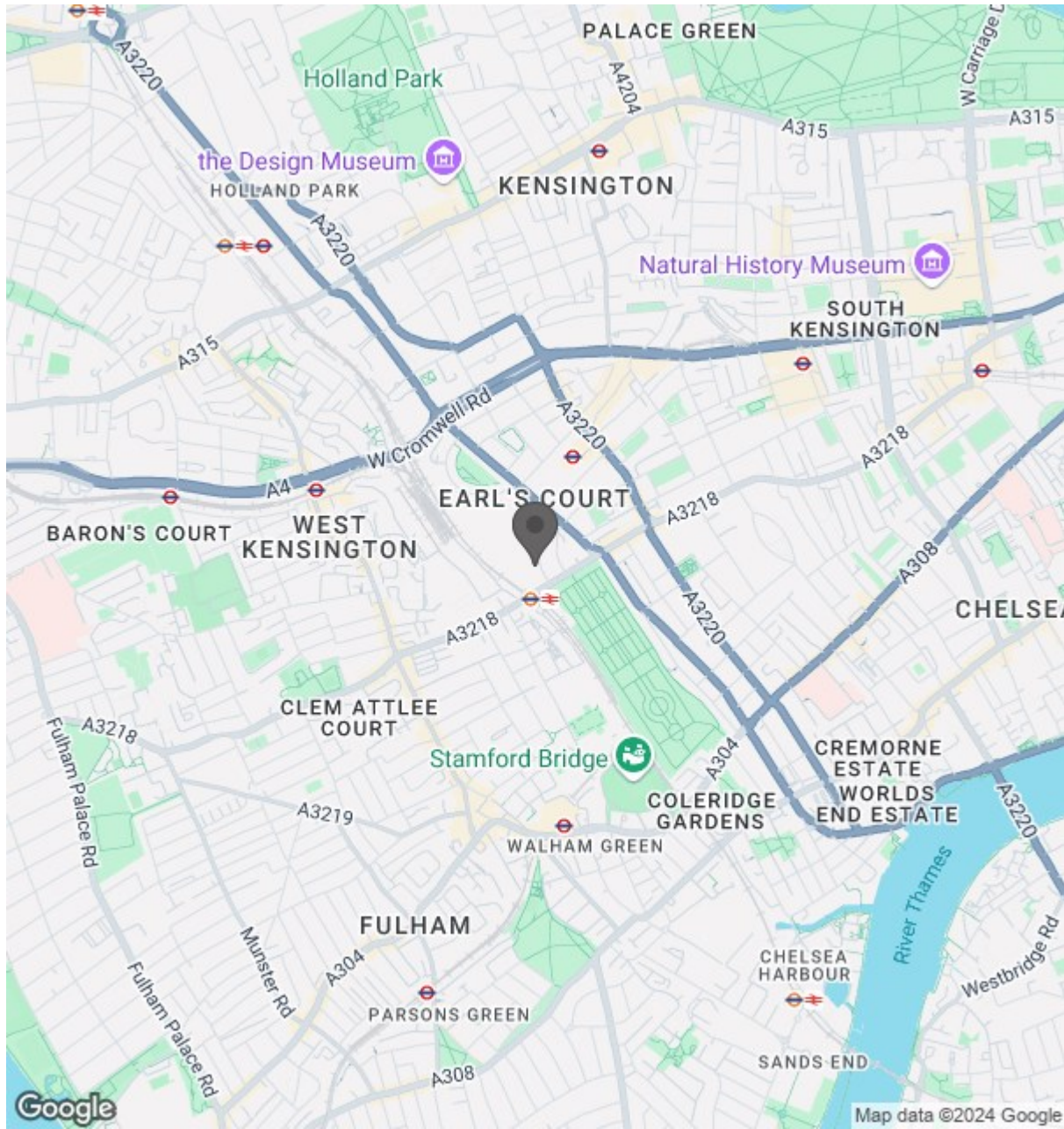






Score	Energy rating	Current	Potential
92+	A		
81-91	B		81 B
69-80	C	78 C	
55-68	D		
39-54	E		
21-38	F		
1-20	G		

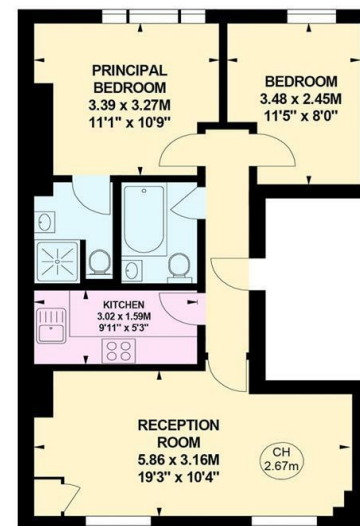
Location



Eardley Crescent, SW5

Approximate gross internal area
54.44 sq m / 586 sq ft

Key :
CH - Ceiling Height



Second Floor