

# Micklethwaite Road

£1,850,000

BRIK







# Micklethwaite Road

£1,850,000 | 6 Bed | 1,876 | 174 | G | £133,250  
 FREEHOLD | HOUSE | SQ FT | SQ M | COUNCIL TAX | STAMP DUTY

A substantial family home with a 68ft Southwest facing garden, further potential to extend, and close to West Brompton and Earls Court stations.

This charming six Bedroom house is arranged over three floors and extends to almost 1,900 sq ft of living space. On the ground floor to the front is a bright double reception room with a bay window, a modern bathroom and a kitchen breakfast room to the rear. French doors lead out onto 68ft (21m) Southwest facing garden with mature trees making it feel very private. On the first floor there are three bedrooms and a further double bedroom with an en suite shower room.

The loft and pod have been converted to create two further double bedrooms and a modern shower room. The house offers excellent scope to extend on the ground floor, with planning permission is granted to extend the kitchen Ref: 2013/03232/FUL

Micklethwaite Road is located within easy reach of Fulham Broadway, West Brompton and Earl's Court underground stations. Earl's Court provides an excellent selection of shops, bars and restaurants which are all close by. Fulham Broadway is also with walking distance with its independent cafes, restaurants (including a Waitrose supermarket and underground station (District Line, Zone 2). EPC Rating: ...

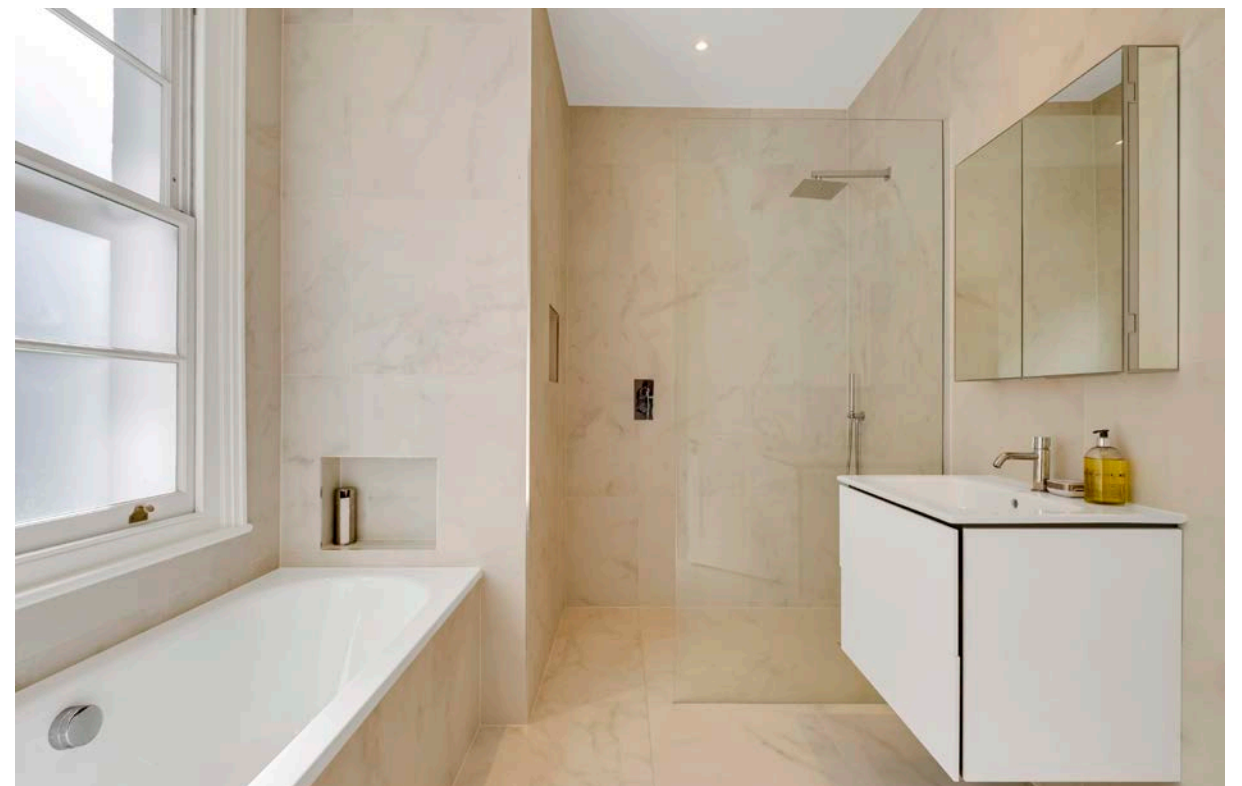
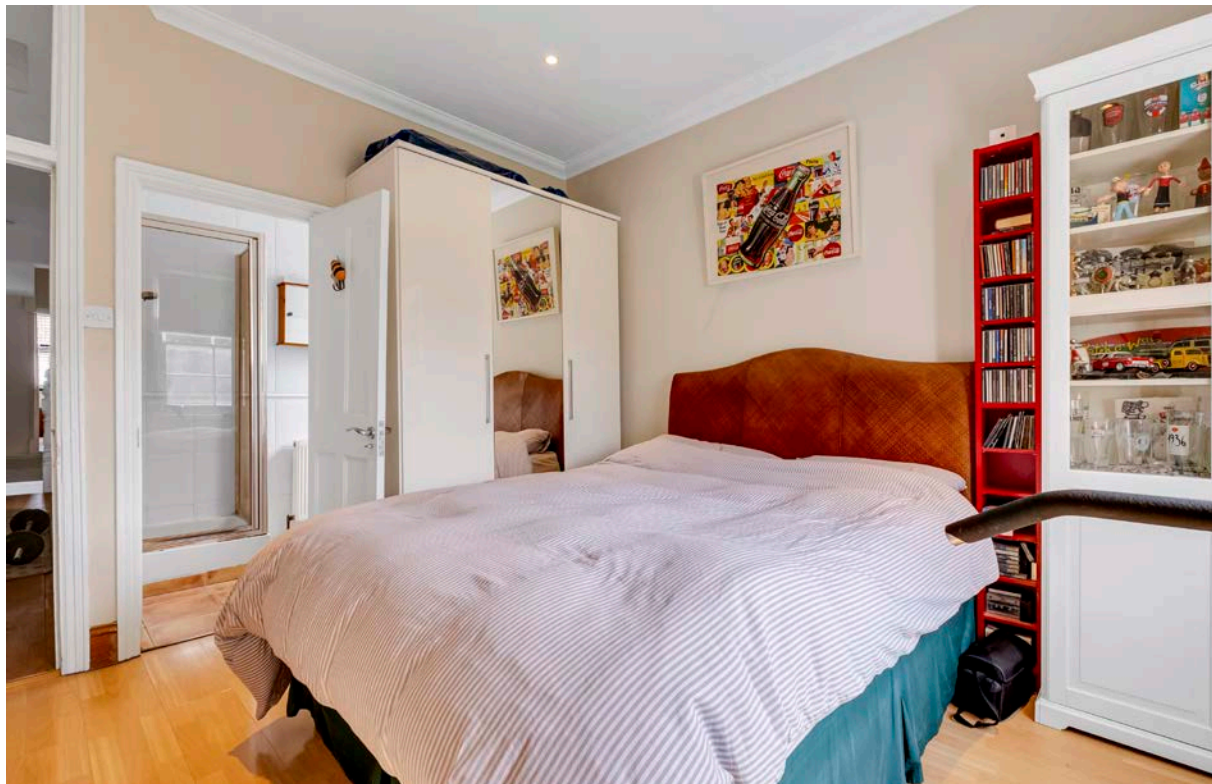
- ✓ 6 bedrooms
- ✓ 3 bathrooms
- ✓ Double reception
- ✓ Kitchen breakfast room
- ✓ 68ft (21m) Southwest facing garden
- ✓ Residential street
- ✓ Potential to extend
- ✓ Freehold
- ✓ Approx 1,876 sq ft (174 sq m) Excl. eaves (271 sq ft)
- ✓ Council taxband - G



James Sims  
 DIRECTOR  
 17 YEARS EXPERIENCE  
 020 7384 6790  
 james@brik.co.uk













## FULHAM AREA GUIDE

# West Brompton

“West Brompton” lies between North End Road, home to a popular and vibrant street market selling fruit & veg at knock-down prices, and one of the finest cemeteries in the country, Brompton Cemetery to the East, home to thirteen holders of the Victoria Cross and the location for various films including Golden Eye and Johnny English.

The real benefits of this area are three fold; Fulham Broadway, with its shops, cinema, restaurants and tube (District Line, Zone 2) is the true centre of Fulham, and only 5 minutes walk. Although not as well-to-do as Parsons Green it is the liveliest and busiest part of Fulham.

Transport links are great, there’s a Michelin star (at time of writing) restaurant, The Harwood Arms, and the massive Earls Court re-development is only a stones throw away so we could see healthy capital gains here as it unfolds over the years.

Though this area sometimes feels a little detached from the rest of Fulham and the SW6 post code, with wider roads it does lack the more family feel of some of the grids of roads elsewhere in Fulham.

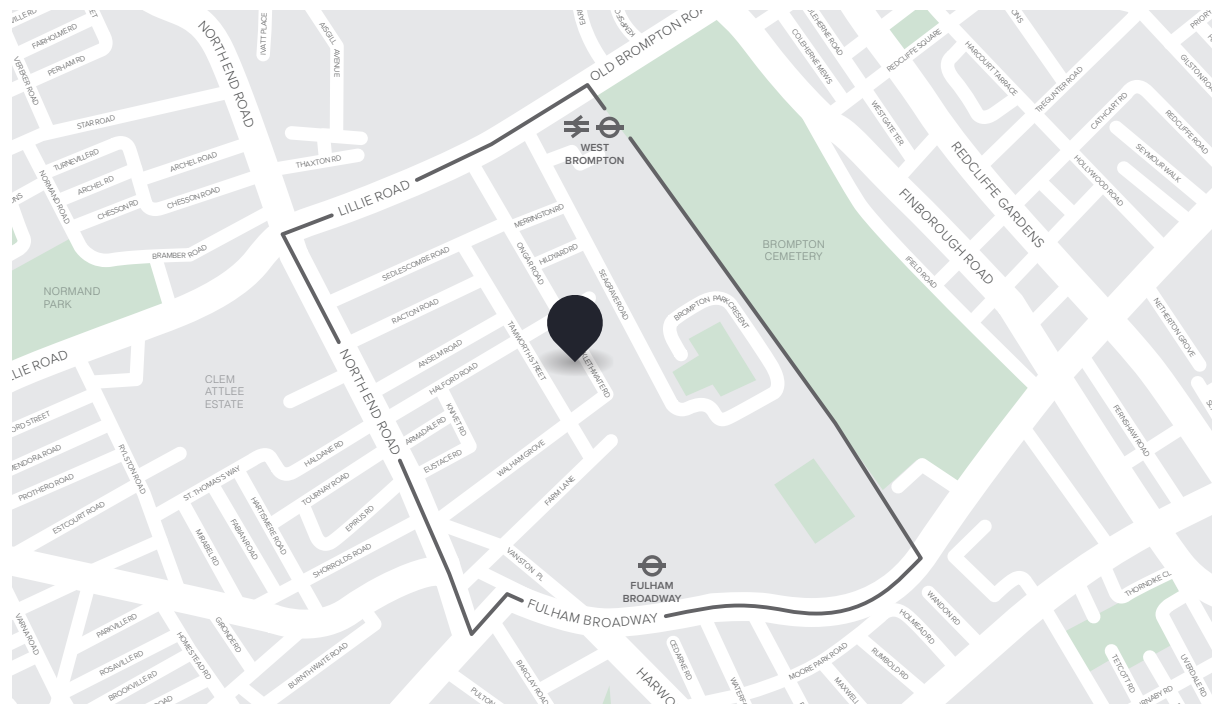
### CLOSEST:

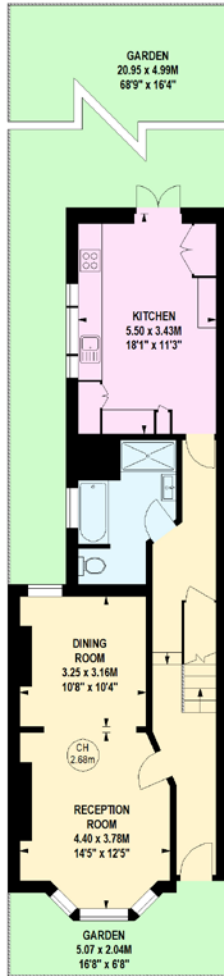
- 🚶 Earls Court (14 mins)
- 🚶 West Brompton (3 mins)
- 🚶 Eel Brook Common (10 mins)

### KEY:

- 📍 Property location
- ‘West Brompton’ area of Fulham

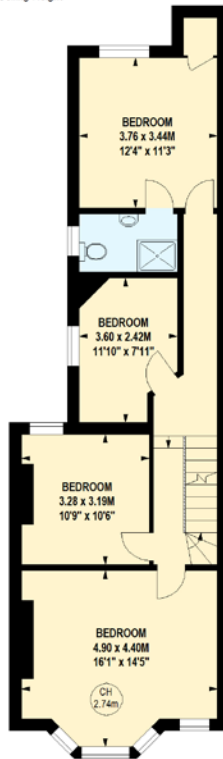
[Read all our Fulham area guides here](#)





Ground Floor

Key :  
CH - Ceiling Height



First Floor



Second Floor

Important notice Brik give notice that: all text, photographs and plans on these brochure are for guidance only and are not necessarily comprehensive; any areas, measurements or distances given are approximate; these details do not constitute part of an offer or contract and must not be relied upon as statements or representations of fact; it should not be assumed that the property has all the necessary planning permissions and building regulations approvals; we are not authorised to give any representations or warranties in relation to this property whatsoever; potential purchasers must satisfy themselves as to the correctness of all details by inspection or otherwise. Brik, 77 Parsons Green Lane, Fulham, London SW6 4JA Tel: 020 7384 6790 Email: hello@brik.co.uk