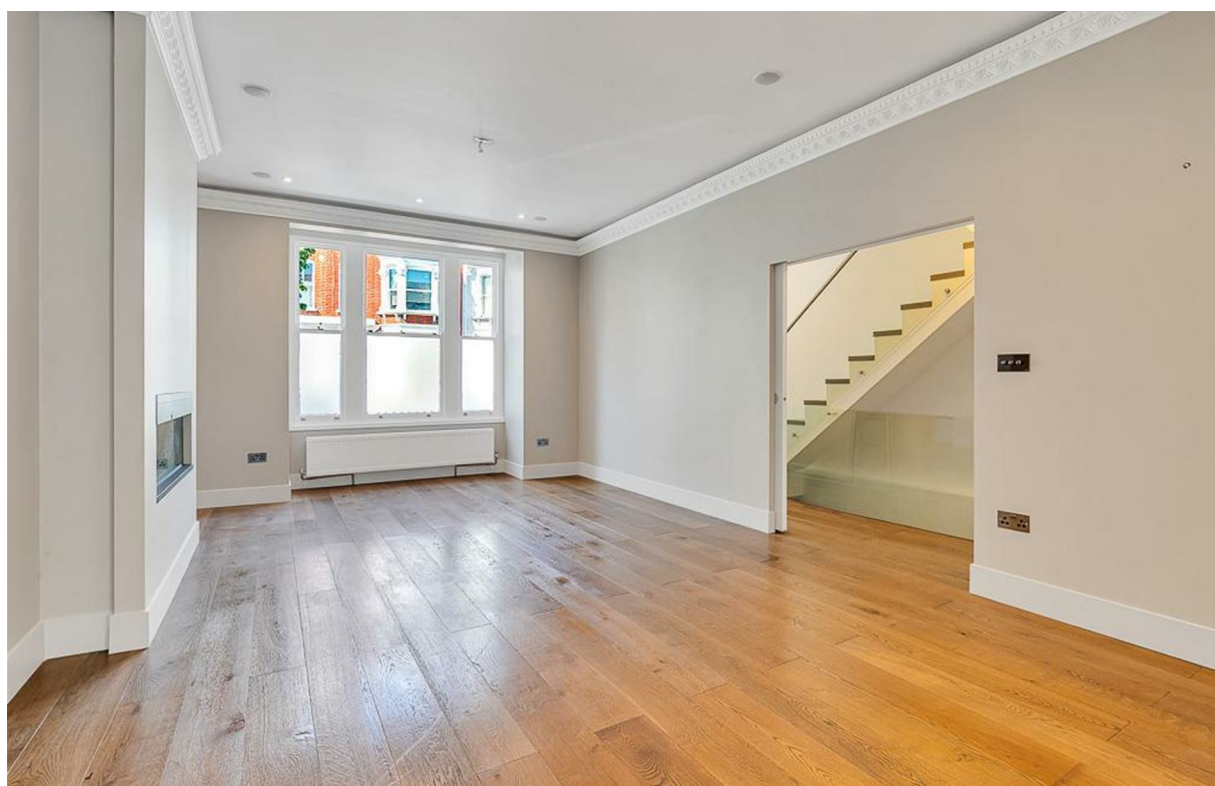


Oxberry Avenue

£9,000 Per Month



Oxberry Avenue

£9,000 Per
Month

5 BED
House - Terraced

0000
SQ FT

0000
SQ M

This property is owner occupied and has recently been refurbished to their taste, far surpassing the usual standard of rental homes. Following a change of circumstances the owners are now in a position to offer the house to some lucky tenants. A brand new kitchen which offers direct access to the re-landscaped garden through the floor to ceiling patio doors has been installed; featuring new tiled flooring, new gas hob, new kitchen island, new storage units, wine cooler and extra space around the island to allow the more serious chef ample space to operate. Sky lights in the kitchen ceiling provide the perfect area for a large dining table allowing families to dine together and the boiler has been hidden away in its own boiler room. The reception has wooden flooring, new mood lighting, new radiators and new ornamental fireplace to provide the perfect relaxing atmosphere. There is also storage for coats and an additional cloakroom, all of which is on the ground floor. The fully developed basement offers a media room/second reception which also offers direct access to the garden, floor to ceiling storage units in the corridor, a utility room and double bedroom with it's own en suite perfect for a live in nanny. The first floor provides three bedrooms, one of which is perfect for a home office and a family bathroom with two sinks. The top floor is made up entirely of the master suite, with Juliet balcony overlooking the garden, brand new handmade bespoke built in wardrobe and incredible new en suite bathroom with copious amounts of storage, brand new shower, brand new sinks, new mirror and counter top as well as a bidet.

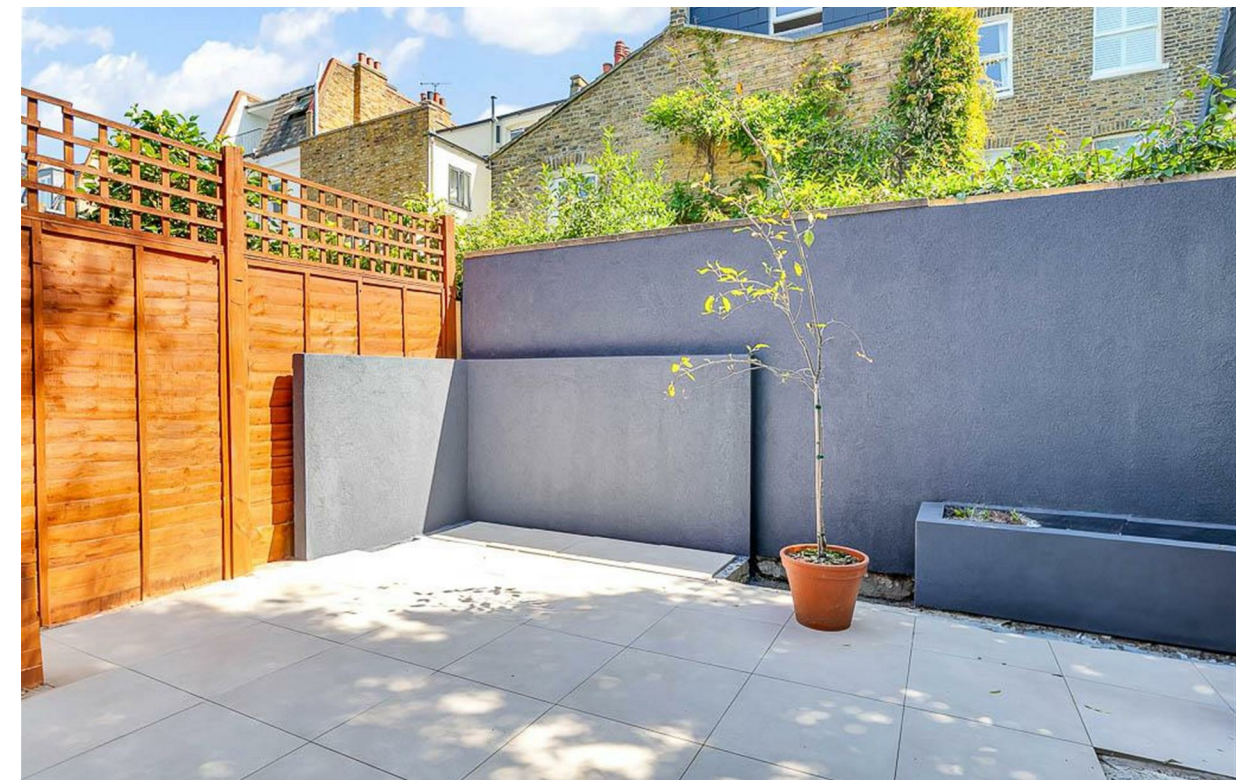
The closest underground station is Putney Bridge (District Line, Zone 2) which is within easy reach and there's also brilliant bus links close by running along Fulham Palace Road which head

- Never rented before
- Five bedrooms
- Three bathrooms
- Brand new kitchen
- Brand new en suite for master suite
- Relandscaped private garden
- Two receptions
- Bespoke built in storage units
- 2838 Sq Ft / 263 Sq M
- Available mid August

ANDREW SHAW

02073846790

andrew@brik.co.uk

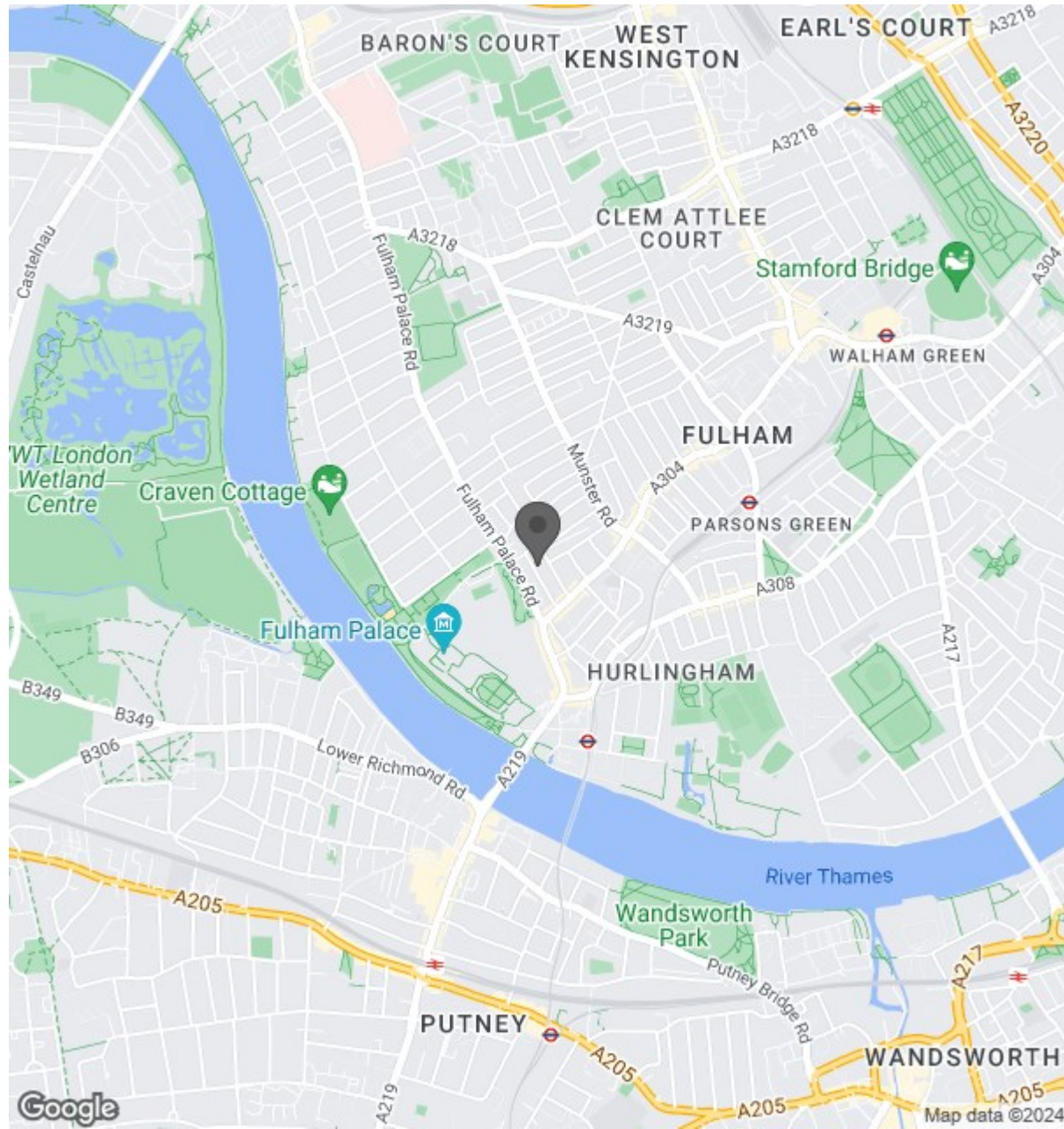


north to the transport hub of Hammersmith. The flat is in an excellent location for access to Bishops Park (which has recently been extensively refurbished with 'some of the best public tennis courts in the country'), the Thames Riverside Path and an array of shops, cafes and restaurants which are all within walking distance including a Sainsbury's local store on the Fulham Road itself.





Location

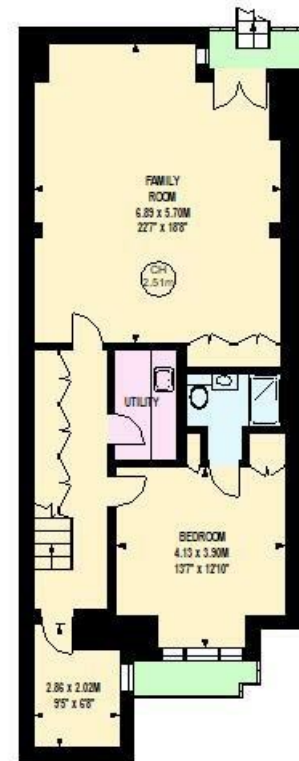


Oxberry Avenue, SW6

Approximate gross internal area
263.65 sq m / 2838 sq ft
(Including Eaves Storage)
Eaves Storage
7.15 sq m / 77 sq ft



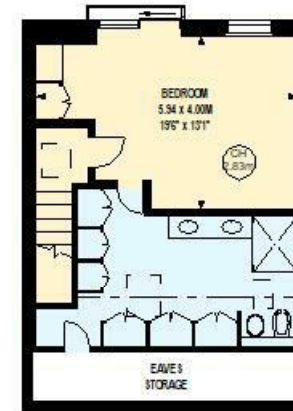
Key:
CH - Ceiling Height



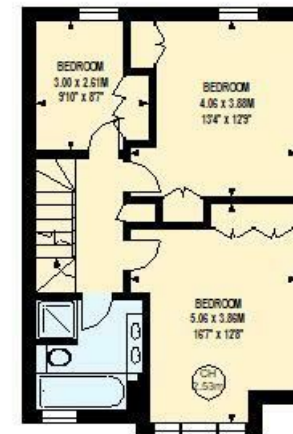
Lower Ground Floor
888 sqft



Ground Floor
842 sqft



Second Floor
548 sqft



First Floor
580 sqft

Although every attempt has been made to ensure accuracy, all measurements are approximate.
This floorplan is for illustrative purposes only and not to scale.
Measured in accordance with RICS standards.