

# Churchfield

£2,600 Per Month





# Churchfield Mansions

£2,600 Per  
Month

2 BED  
Apartment

0000  
SQ FT

0000  
SQ M

The property offers 835 sq ft / 77.7 sq m of lateral living space on the third floor of this popular mansion block. The accommodation comprises of two double bedrooms, family bathroom and large open plan kitchen/living room with feature fireplace and wooden floors.

Located on New Kings Road, Churchfield Mansions is a sought-after period mansion block which boasts close proximity to the abundance of shops, boutiques and restaurants the area has to offer. Underground stations of Parsons Green (District Line, Zone 2) and Putney Bridge (District Line, Zone 2) are within easy walking distance. Energy rating e.

- Two double bedrooms
- Bathroom with shower
- Furnished
- Woodern flooring
- Mansion block
- Top floor apartment
- 835 Sq Ft / 77.6 Sq M
- Available 7th August 2024

**ANDREW SHAW**

02073846790

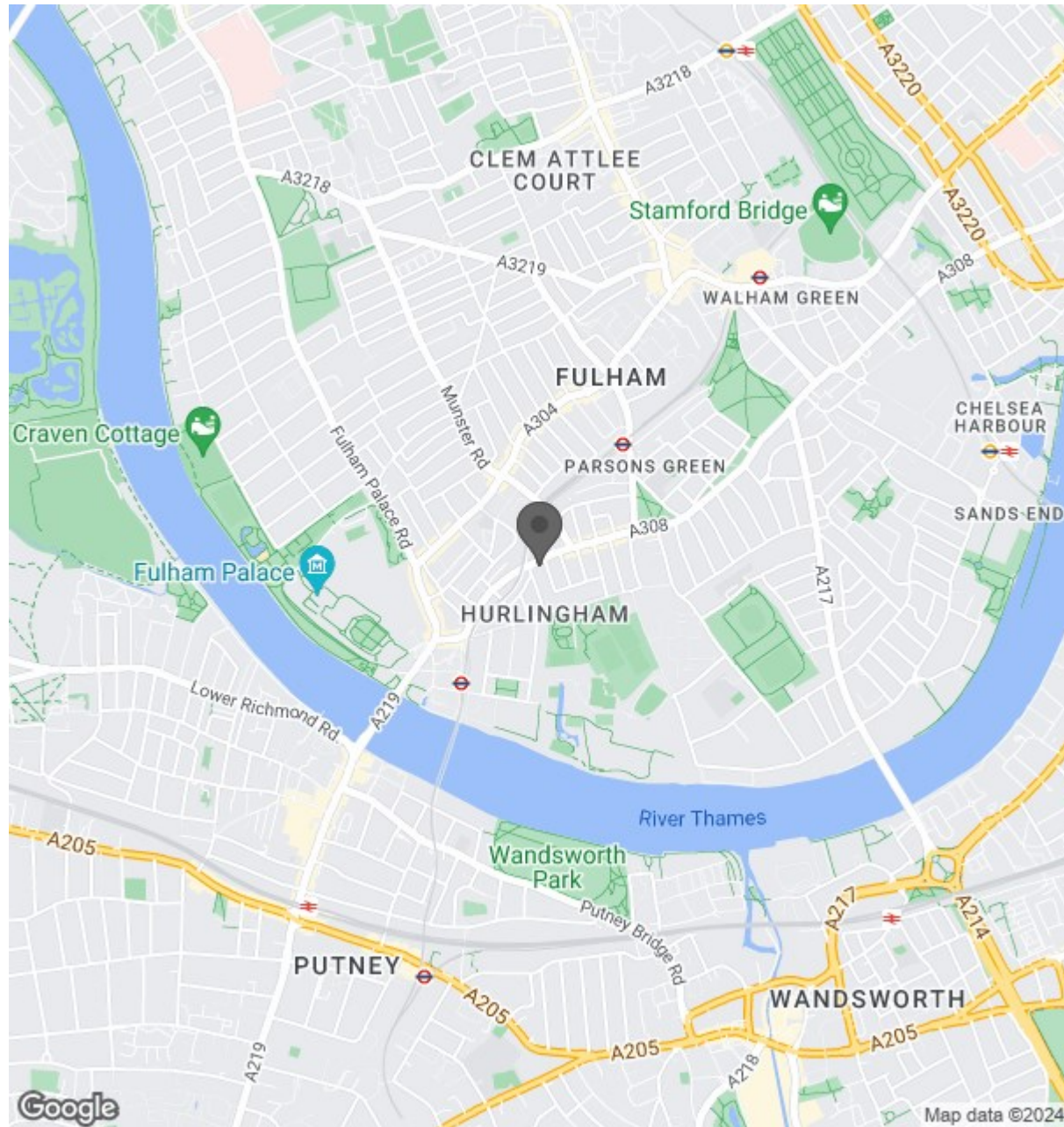
andrew@brik.co.uk





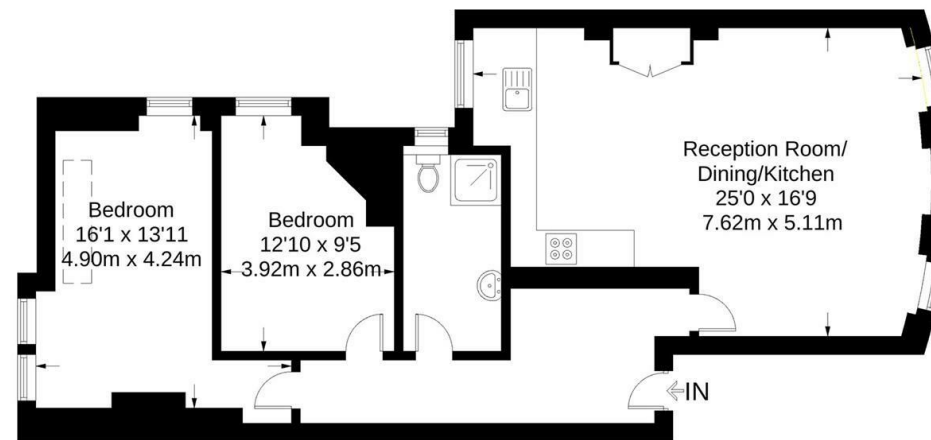


Location



### Churchfield Mansions

Approximate Gross Internal Area = 835 sq ft / 77.6 sq m



Third Floor

Not to scale, for guidance only and must not be relied upon as a statement of fact.  
All measurements and areas are approximate only and have been prepared in accordance with the current edition of the RICS Code of Measuring Practice.