

New Kings Road

£795,000



New Kings Road

£795,000

Leasehold

3 BED

Flat

0000

SQ FT

0000

SQ M

The property is entered through a private courtyard at the rear via the private rear garden with accommodation comprising stairs to the first floor with double doors into the kitchen/ breakfast room, guest cloakroom, a double bedroom with a period fireplace and built-in storage and to the front is a spacious reception room with high ceilings, period fireplace and built-in shelves. Stairs to the second floor which has a further 2 double bedrooms, family bathroom with bath and overhead shower. This floor benefits ample storage and roof terrace, ideal for summer days. EPC rating E.

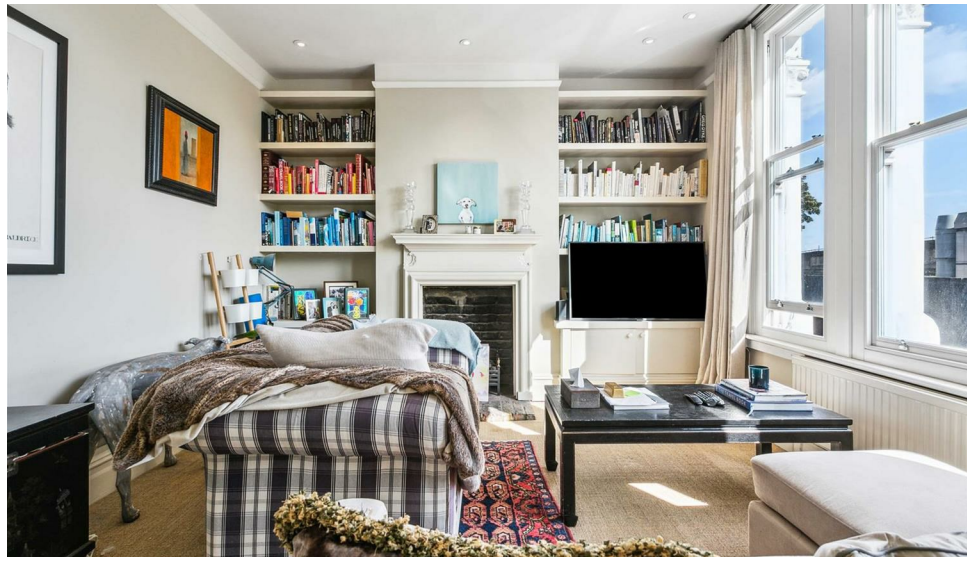
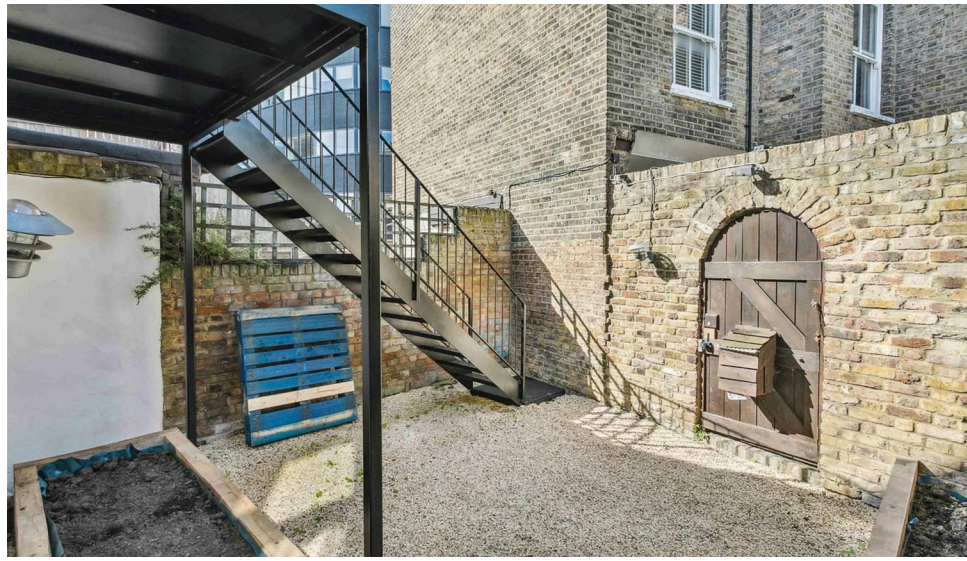
The flat is located on the New Kings Road between Parsons Green and Putney Bridge, making it centrally positioned in the most desirable parts of Fulham. In very close proximity are a range of excellent restaurants, independent cafes, boutique shops and Putney Bridge underground station (District Line, Zone 2). There is also a very convenient Waitrose in Parsons Green and a Whole Foods in Fulham Broadway. You are moments away from bus stops on the New Kings Road into Chelsea and towards Central London.

- Three bedrooms
- Kitchen/breakfast room
- Bright reception Room
- Split level maisonette
- Garden & Terraces
- Family bathroom
- Cloakroom
- 935sqft / 86sqm
- Long lease (150 years)
- LBHF: Band E

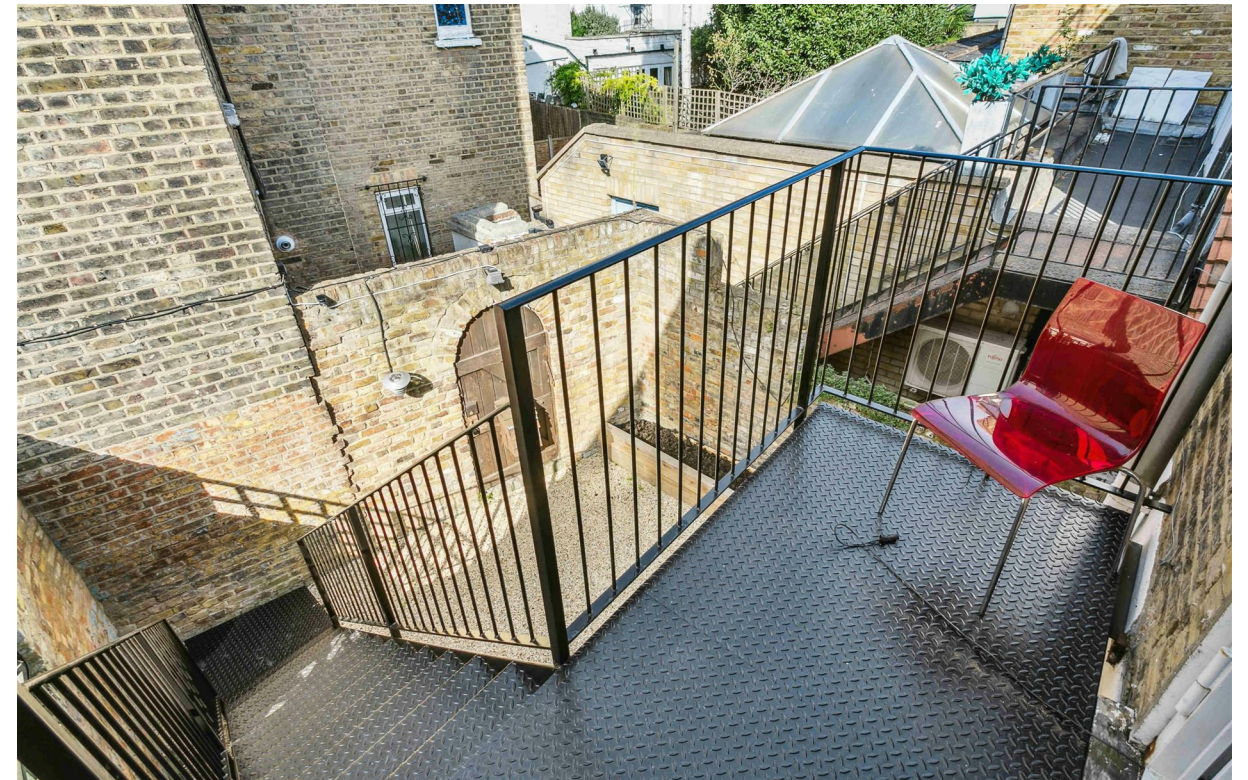
MATHEW GOSS

020 7384 6790

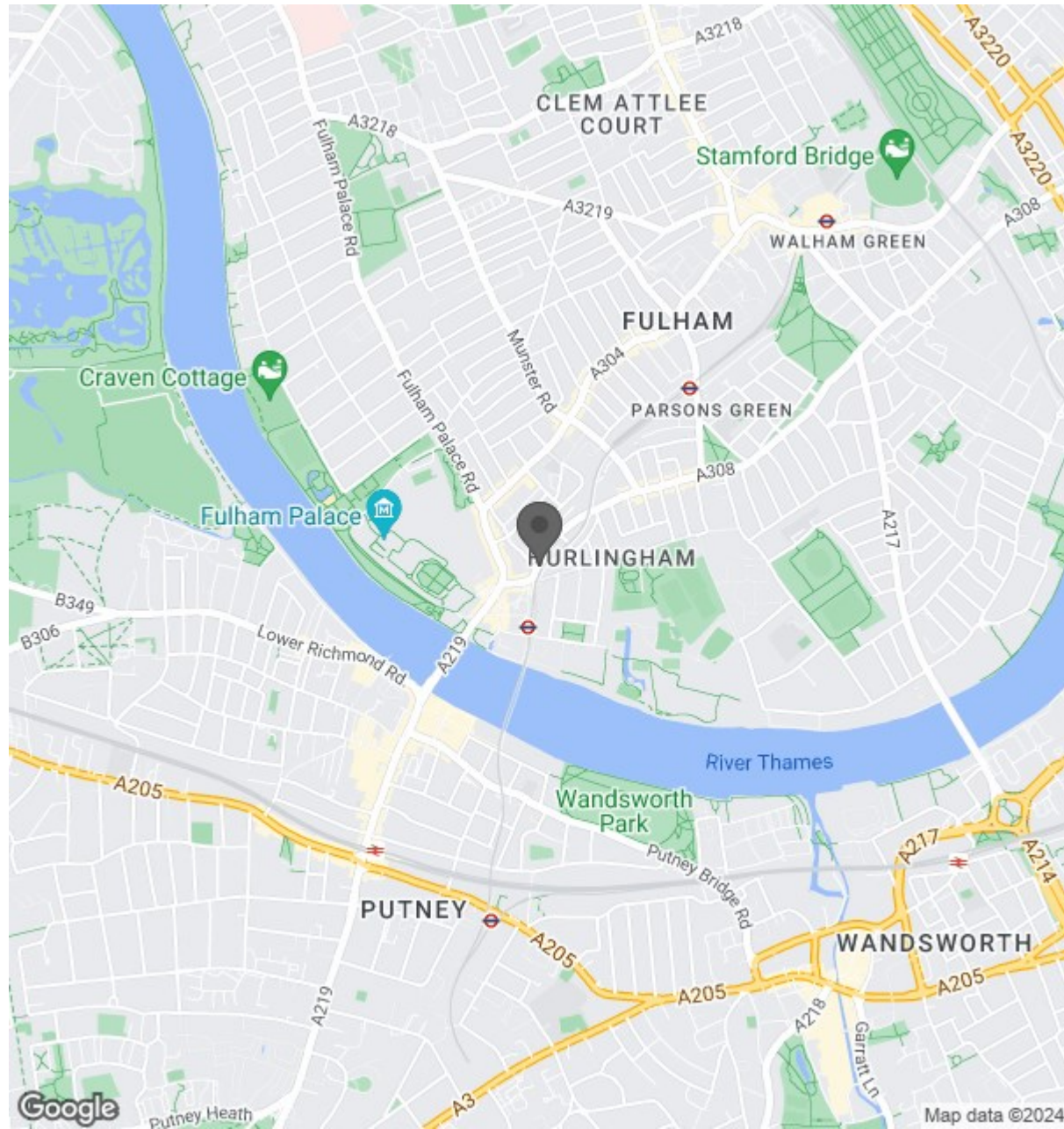
mathew@brik.co.uk







Location

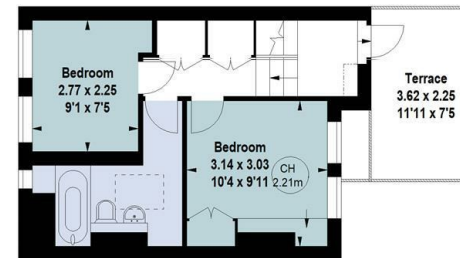


New Kings Road, SW6
Gross internal area (approx)

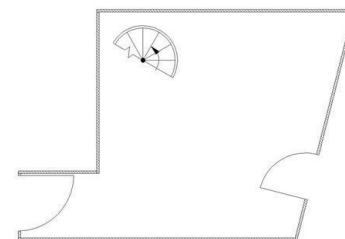
86.86 sq m / 935 sq ft



Key :
CH - Ceiling Height



Second Floor



Ground Floor



First Floor

For Identification Only. Not To Scale.
© Click London Limited