

Fulham Palace

£785,000



Fulham Palace Road

£785,000

Leasehold

2 BED

Apartment

0000

SQ FT

0000

SQ M

A recently developed split level garden flat totalling just over 1100 sq ft. This stylish property is arranged over two floors comprising an bright open plan kitchen dining area and reception room with bi folding doors leading onto a private patio garden, two equally sized double bedrooms with Juliet balconies overlooking the garden, and two bathrooms of which one is ensuite. The property is immaculately presented with quality fittings throughout.

The property is within easy walking distance of the Thames Path which leads to the wonderful green space of Bishops Park, one of area's largest green spaces which also has a children's play area. The closest underground stations are Barons Court and Hammersmith Broadway (Piccadilly, District, Hammersmith and City Lines, Zone 2). There is also a selection of bus routes linking the property to major locations. EPC : C rating

- Stunning apartment
- Two double bedrooms
- Two shower rooms
- Large open planned living space
- Private garden
- Split level
- New 125-year lease
- None of the rooms overlook the road to the front
- 1102 sqft / 102 spm
- EPC : C rating

MATHEW GOSS

020 7384 6790

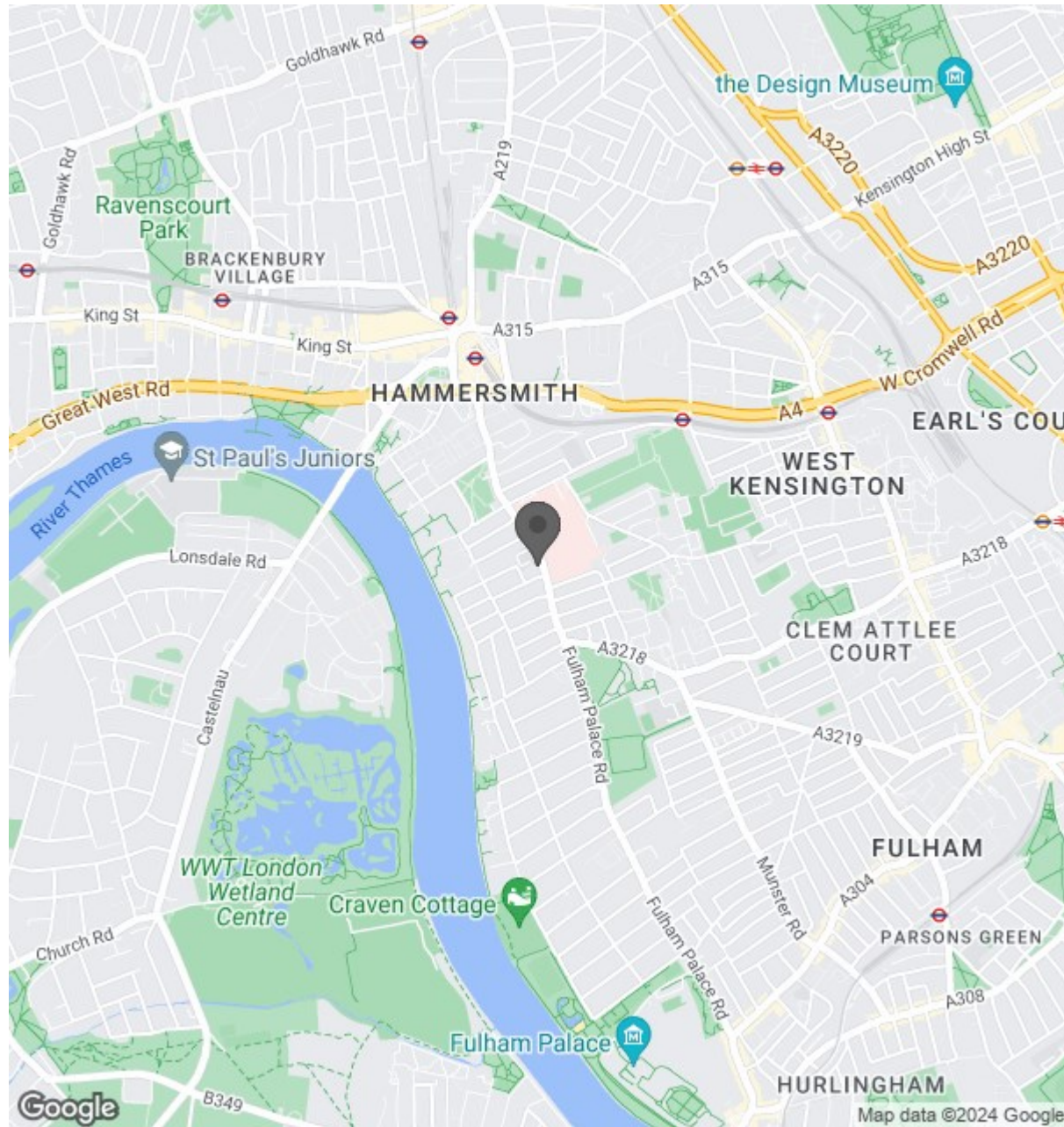
mathew@brik.co.uk







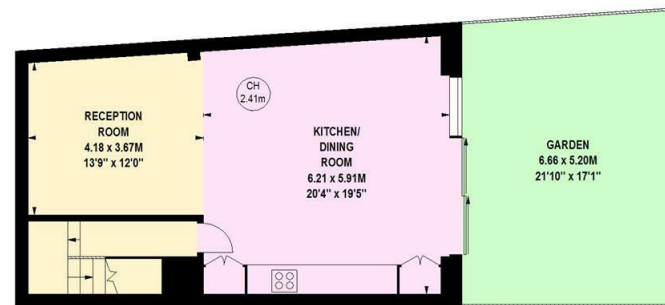
Location



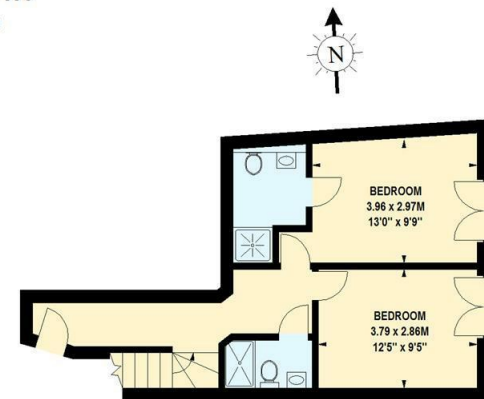
Fulham Palace Road, W6

Approximate gross internal area
102.38 sq m / 1102 sq ft

Key:
CH - Ceiling Height



Lower Ground Floor



Ground Floor