

Rainville Road

£4,182 Per Month





Rainville Road

£4,182 Per
Month

2 BED
Apartment

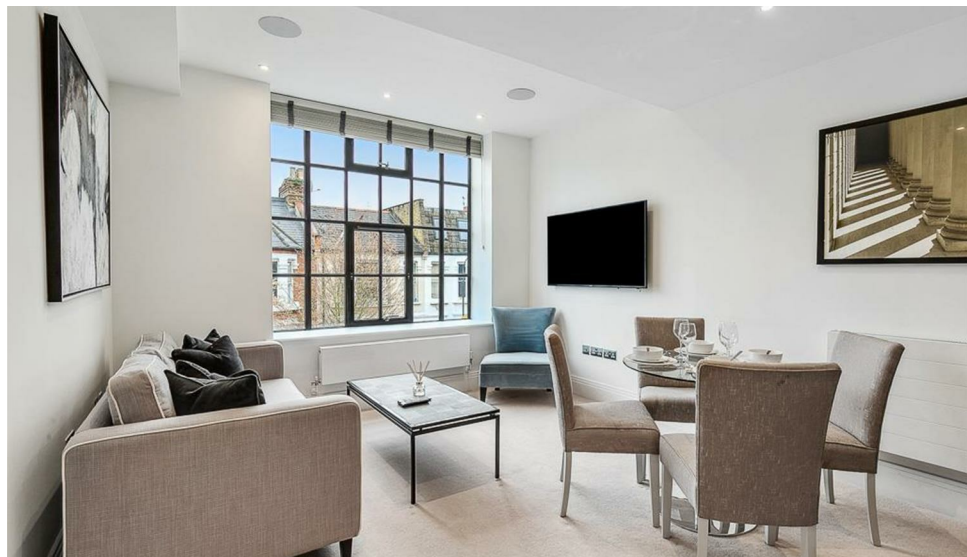
0000
SQ FT

0000
SQ M

- Gated development
- Two double bedrooms
- Two bathrooms
- First floor
- Underfloor heating
- Automatic lights
- Concierge
- River development
- Fully furnished
- Available now

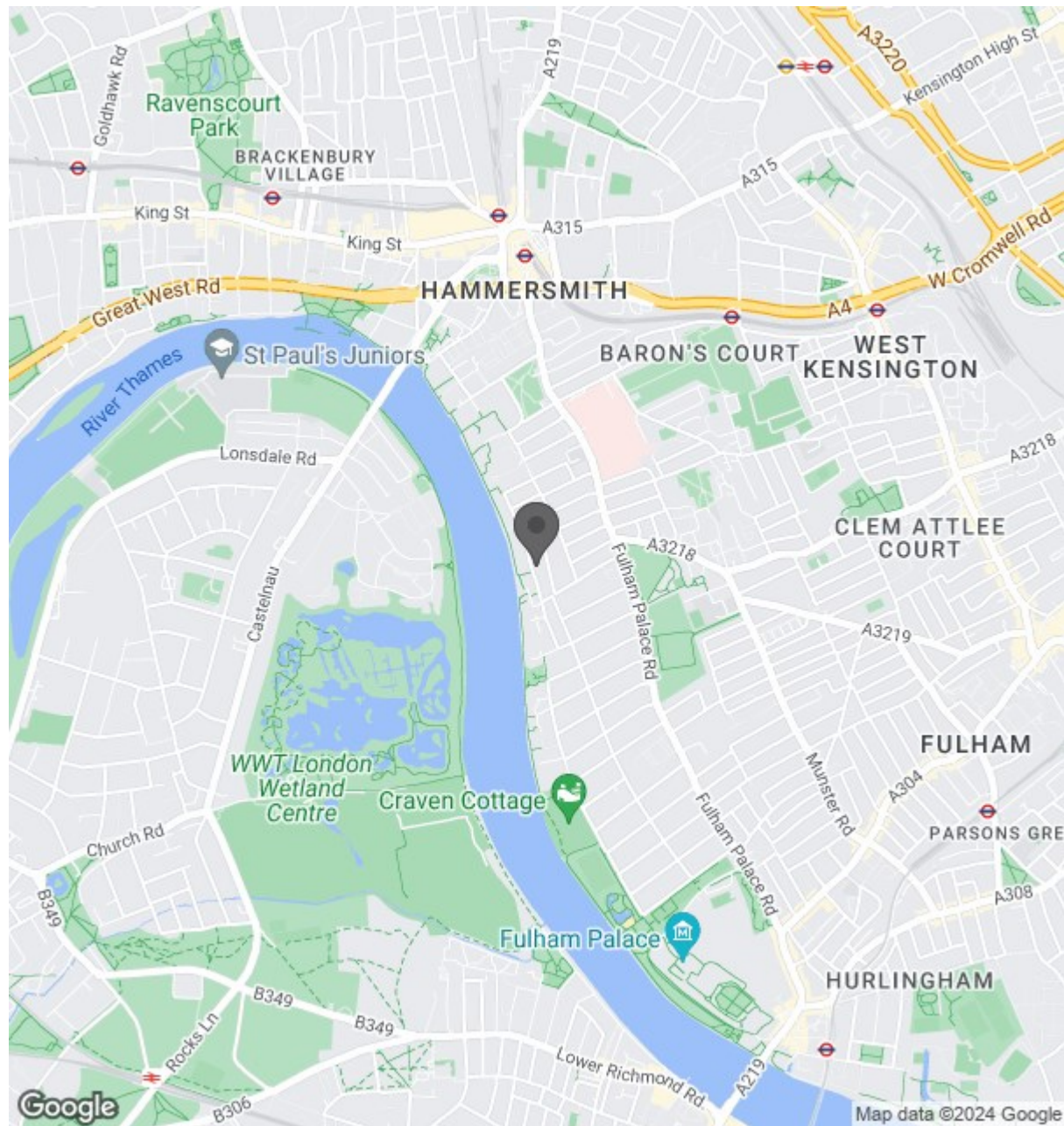


ANDREW SHAW
02073846790
andrew@brik.co.uk





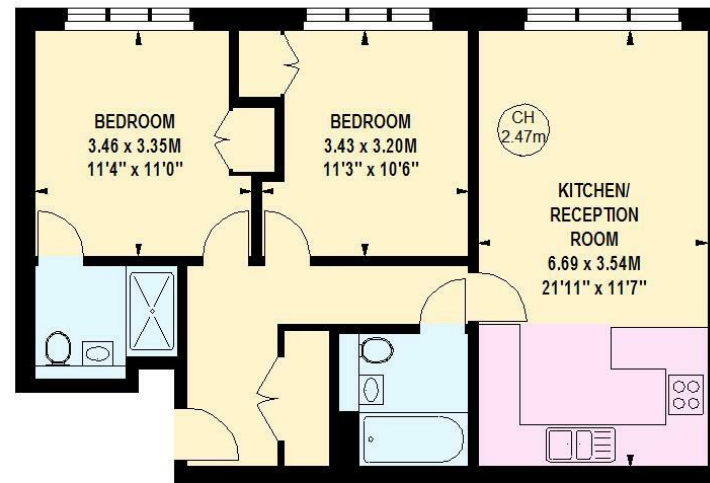
Location





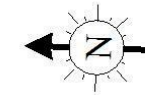
0000
SQ FT

0000
SQ M



Palace Wharf, SW6

Approximate gross internal area
66.14 sq m / 712 sq ft



Key :
CH - Ceiling Height

First Floor