

Rainville Road

£3,270 Per Month





Rainville Road

£3,270 Per
Month

1 BED
Apartment

0000
SQ FT

0000
SQ M

This modern apartment offers 550 sq ft and comprises of entrance hallway, modern family bathroom with underfloor heating, large double bedroom with built in storage and open plan reception area. The property comes fully furnished with multiple televisions, a Sonos sound system, digital entry telephone system, concierge and modern kitchen appliances.

Palace Wharf is situated right on the banks of the River Thames, a short stroll away from the River Cafe, and offers easy access to Hammersmith tube station and all of the amenities located on Fulham Palace Road. Energy rating e.

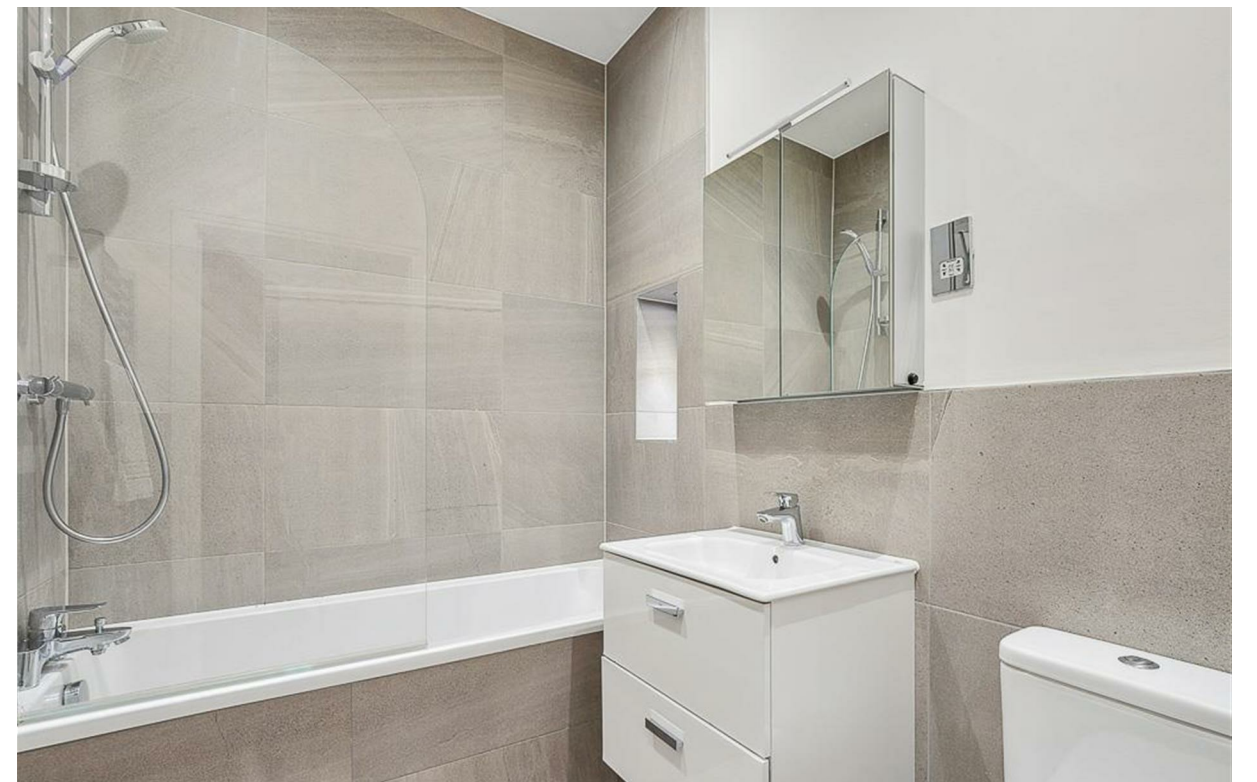
- Secure gated development
- Fully furnished
- Sonos speaker system
- Modern kitchen
- Underfloor heating in bathroom
- Converted warehouse
- Available immediately
- Riverside living
- Ground floor



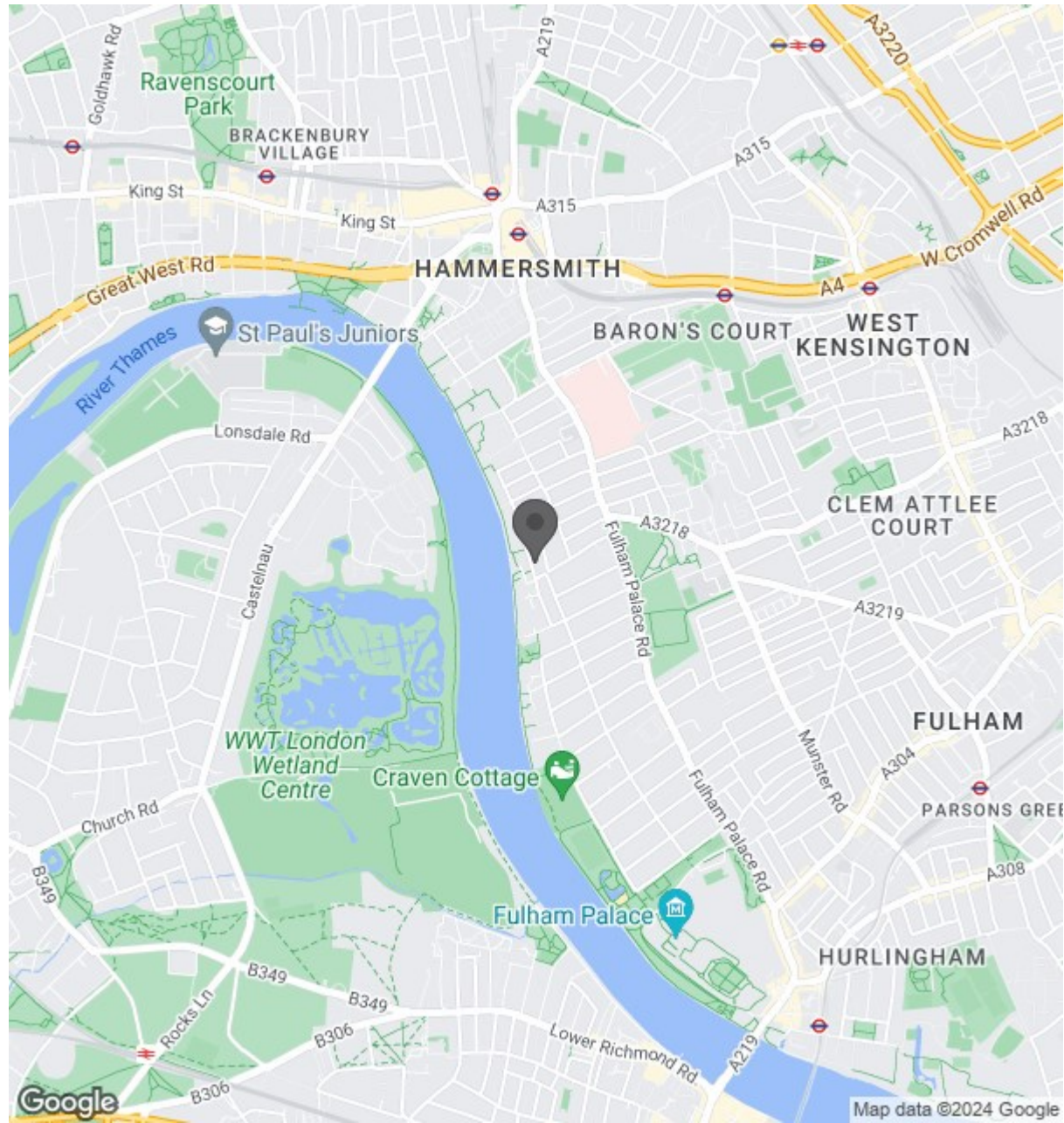
ANDREW SHAW

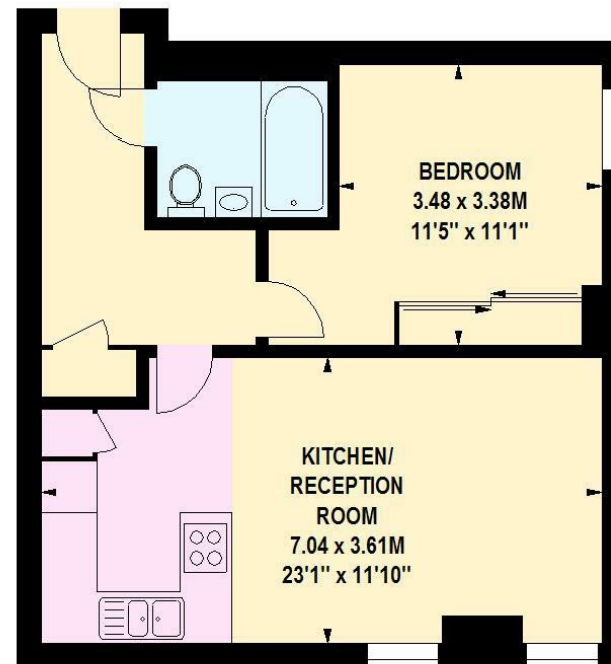
02073846790

andrew@brik.co.uk



Location





Ground Floor

Palace Wharf, SW6
Approximate gross internal area
51.10 sq m / 550 sq ft