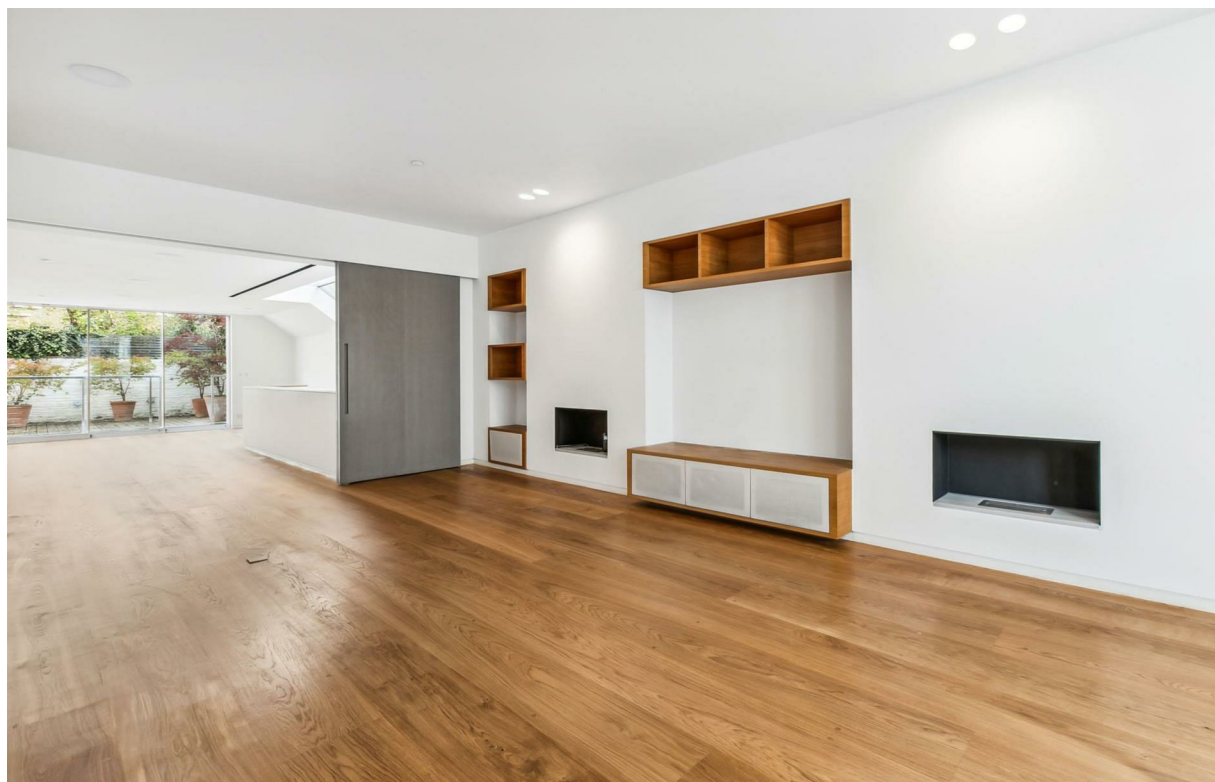


Irene Road

Guide Price £2,950,000



Irene Road

£2,950,000

Freehold

5 BED

House - Terraced

0000

SQ FT

0000

SQ M

Arranged over four floors, this stunning period property extends to almost 3,000 sq ft (274 sq m), offering superb reception and entertaining space in the heart of Parsons Green. The basement level comprises a bespoke Boffi kitchen at the front, with a bay window offering great light, a central island and integrated Gaggenau appliances, a dining room with excellent ceiling height and plenty of further light from the ground floor void, a separate utility room, cloakroom/W.C, and a double bedroom with an en suite shower room, ample storage and sliding doors out onto a decked outside area. There is also a plant room which also serves as a useful storage area.

The ground floor offers substantial entertaining space, comprising two reception rooms, which can open up to create an open plan 50ft (15.25m) living space, with sliding doors opening onto a private garden. The first floor has an elegant master bedroom with a walk in wardrobe and a modern en-suite shower room with a double vanity unit. To the rear of the first floor is an additional bedroom/study with built in storage, an en suite shower room and delightful views over the gardens at the rear. On the second floor there are two further bedrooms, all with ample built in storage, and two additional shower rooms (One en suite).

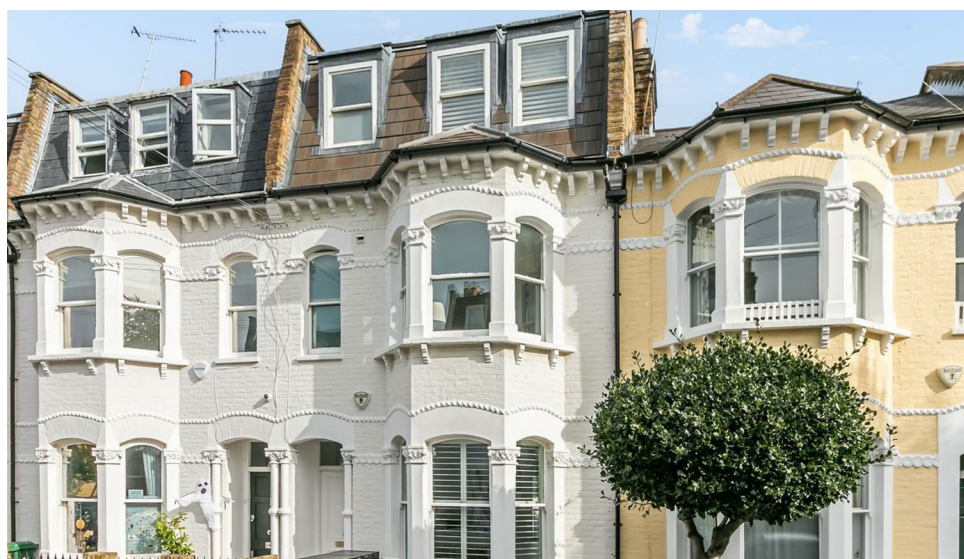
Located in an extremely desirable street only a stone's throw from the gorgeous open spaces of Parsons Green and Eel Brook Common, Irene Road is perfectly located in the heart of Parsons Green (Fulham's most desirable area). Property of this type and in this specific location rarely become available and, in our opinion would make a solid investment for the future. There are plenty of shops, independent cafés and restaurants

- 5 bedrooms
- 5 bathrooms
- Substantial reception room
- Boffi kitchen
- Dining room
- Private garden
- Prime Parsons Green
- Utility room
- Freehold
- Approx. 2,946 sq ft (274 sq m)

JAMES SIMS

020 7384 6790

james@brik.co.uk



all within a very short walk (including a Waitrose supermarket on 'the Green' itself), and several popular and sought after schools are within walking distance. Irene Rd is approximately 300 metres from Parsons Green underground station (District Line, Zone 2), and also just 800 metres away from Fulham Broadway underground station (District Line, Zone 2) and the





shops, cinema, gyms (David Lloyd) and cafes, including a Whole Foods market. EPC rating - C.



Location

