

Fulham Park Gardens

£1,750,000





Fulham Park Gardens

£1,750,000

LEASEHOLD

3 Bed

APARTMENT

1,464

SQ FT

136

SQ M

D

COUNCIL TAX

£121,250

STAMP DUTY

A newly renovated three double bedroom, two bathroom, split level apartment finished to an excellent standard throughout.

This outstanding property has been fully renovated and finished to a very high standard throughout. This stylish split level apartment extends to almost 1,500 sq ft (136 sq m) and has been finished to an exceptional standard throughout, with meticulous attention to detail. The ground floor comprises the principal bedroom with a modern en suite shower room, a separate W.C, study area and a large bespoke fully fitted kitchen at the rear, with doors leading out onto a private landscaped garden. The full basement has been excavated to create a further two double bedrooms, a modern family bathroom, utility space and superb reception room with a large feature crittall style window/door. The property is being sold chain free.

Fulham Park Gardens is a quiet residential street located between Parsons Green and Putney Bridge tubes on the District Line. There is a wealth of green space nearby, with the choice of Hurlingham Park, Parsons Green and Bishop's Park. The local area is bustling with boutiques, cafes, bars and restaurants on the Fulham Road and New Kings Road, all within a short walk of the property.

- ✓ 3 bedrooms
- ✓ 2 bathrooms
- ✓ Reception room
- ✓ Extended Kitchen
- ✓ Separate W.C
- ✓ Study
- ✓ Private garden
- ✓ Leasehold
- ✓ Approx. 1,464 sq ft (136 sq m)
- ✓ Council Tax band: D



JAMES SIMS

020 7384 6790

james@brik.co.uk









FULHAM AREA GUIDE

Fulham Park Gardens

This small enclave of Fulham is nestled between Fulham High Street to the west, Fulham Road to the north and New King's Road to the South. It holds some of Fulham's finest and largest freehold properties, including a few streets of 'Lion Houses'. These properties were built at around the same time as the large 'Lion House' Peterborough estate just South of Parsons Green. They are highly desirable being larger than the average Victorian terrace.

The real benefit of this area is the close proximity to transport at Putney Bridge underground station, only a minutes walk or so away. The river path, Bishop's Park, the lovely Fulham Palace and of course Putney itself with it's large bustling high street are all close to hand.

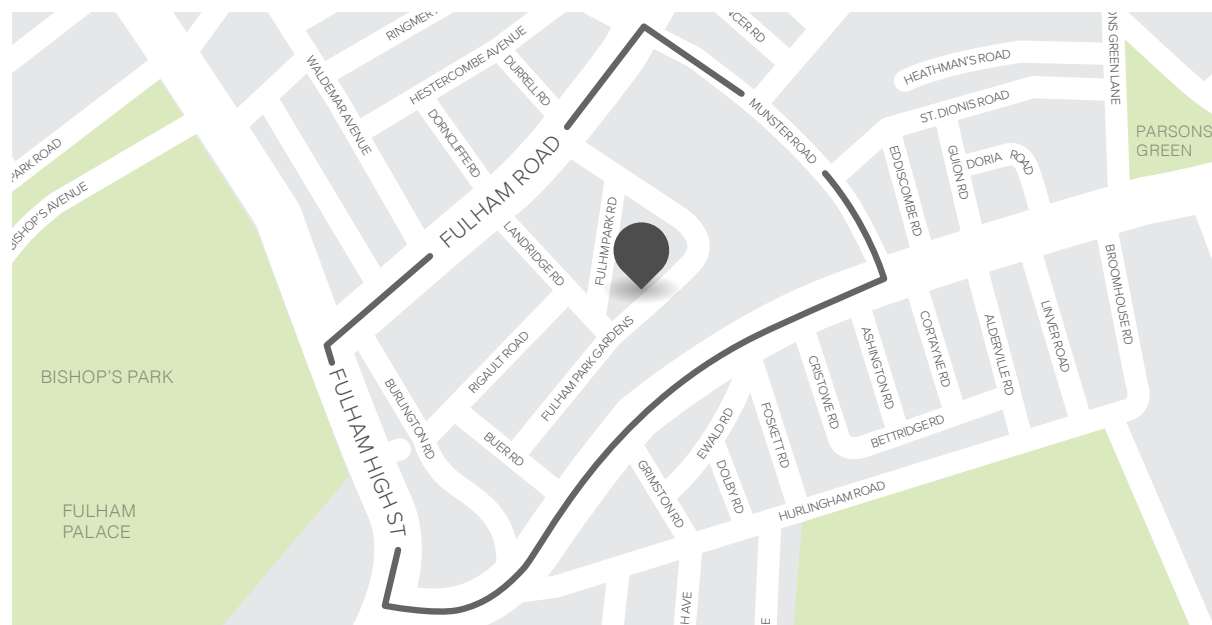
Parsons Green itself is also a short stroll away where you can find a plethora of independent boutique shops and cafes.

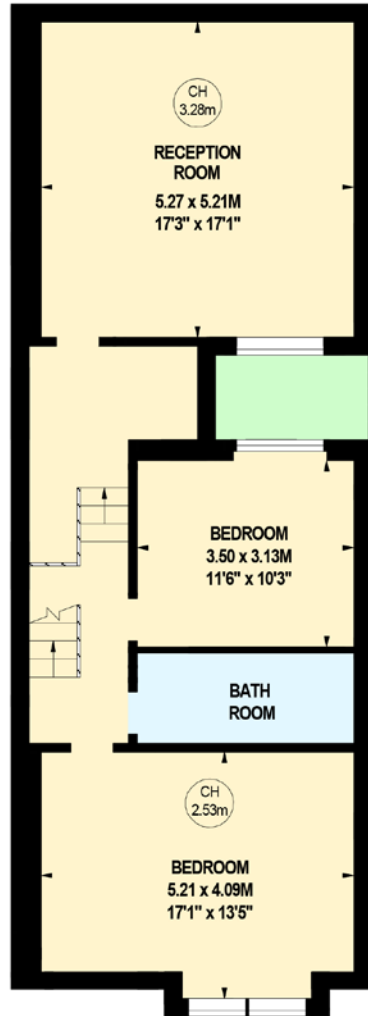
CLOSEST:

- 🚶 Putney Bridge (7 mins)
- 🚆 Putney Station (19 mins)
- 🚶 Bishops Park (4 mins)

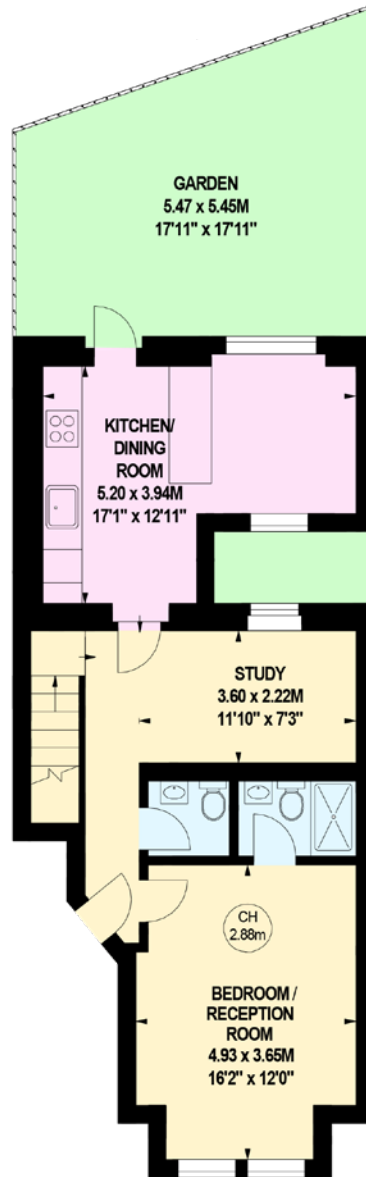
KEY:

- Property location
- | 'Fulham Park Gardens' area of Fulham





Lower Ground Floor



Ground Floor