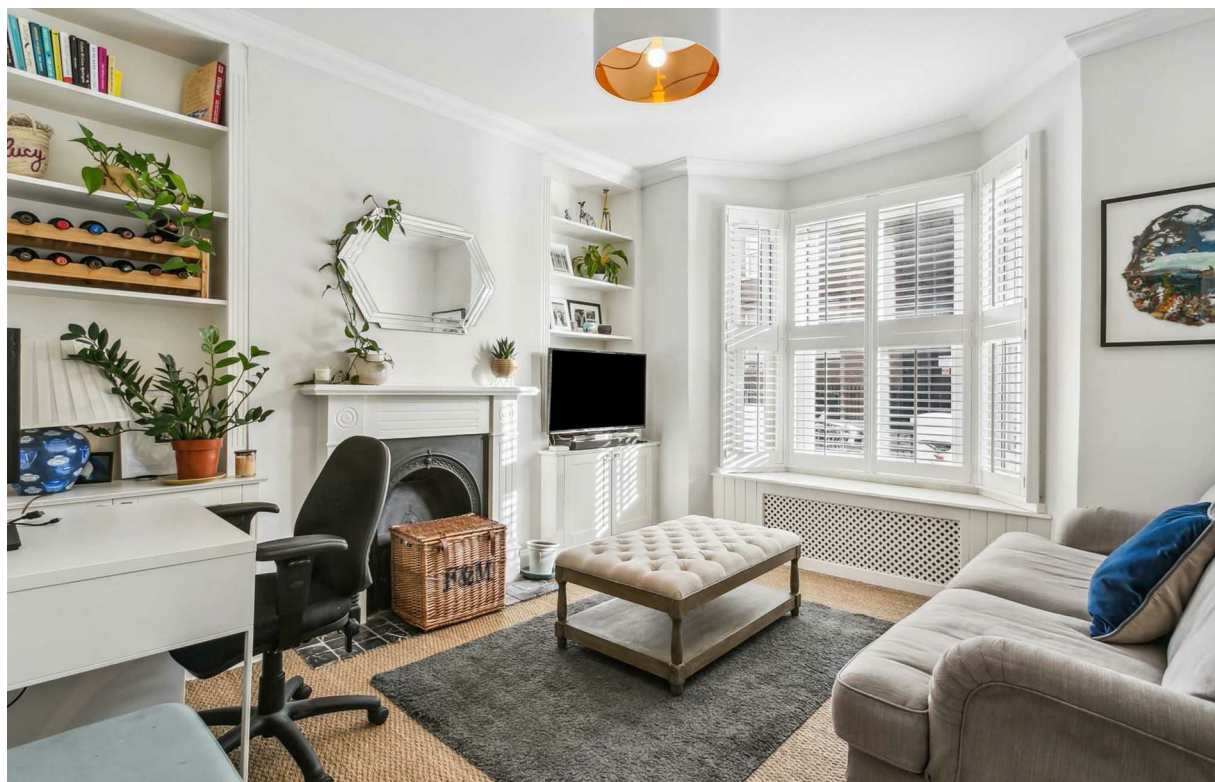


Purcell Crescent

£525,000



Purcell Crescent

£525,000

Leasehold

1 BED

Flat

0000

SQ FT

0000

SQ M

Spanning over 500 sq ft the property comprises of a wonderful reception room with feature fireplace, well-proportioned bedroom, an impressive eat in kitchen with exposed brick work and modern bathroom with underfloor heating. The property also benefits from a long lease and clever storage space throughout the property.

Purcell Crescent is located within walking distance of Hammersmith, Barons Court and West Brompton tube stations and several bus routes link the property to central London. There is a range of local amenities found on nearby Munster Road and Fulham Palace Road.

- Beautifully presented
- Ground floor conversion flat
- West facing garden
- Kitchen/ Breakfast room
- Separate reception room
- One bedroom
- Modern bathroom
- Approx. 502 sq ft (47 sq m)
- EPC Rating: D

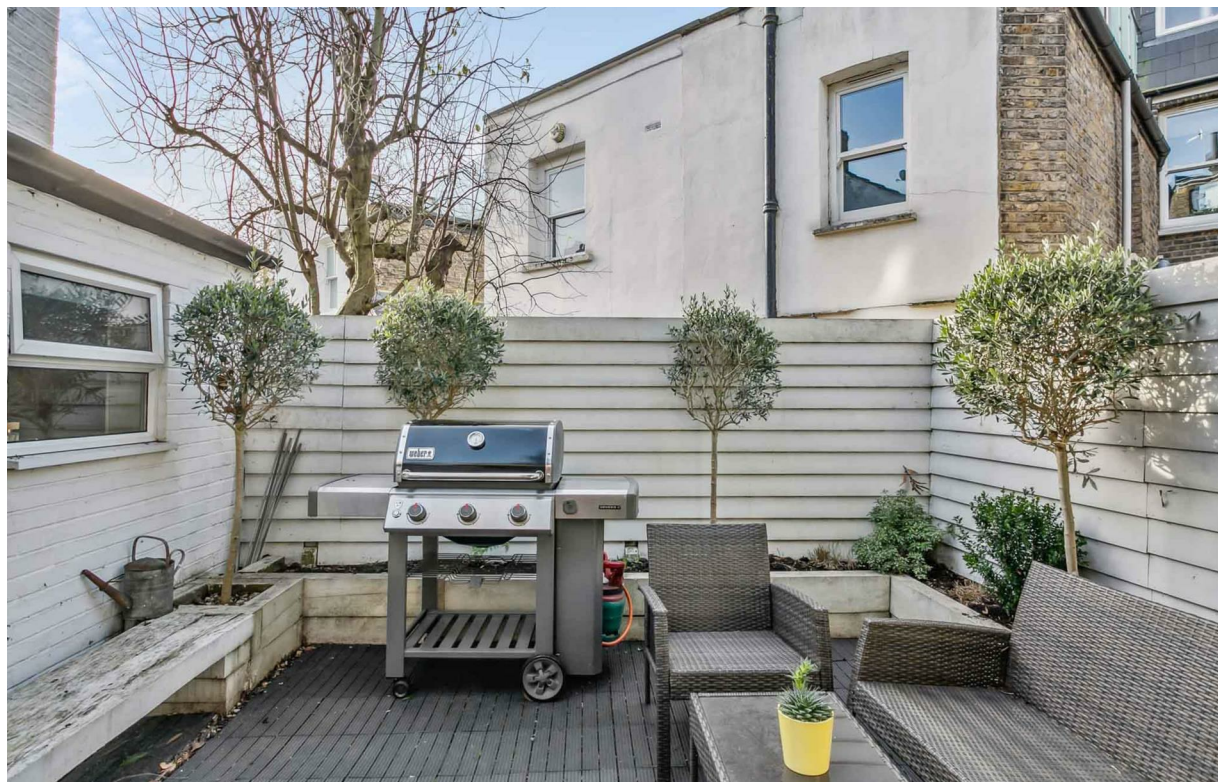
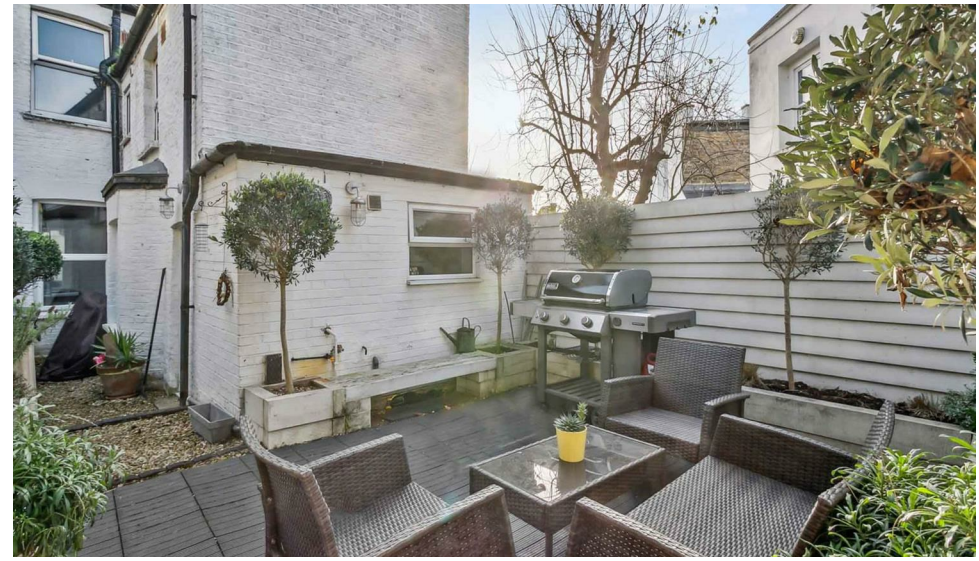


MATHEW GOSS

020 7384 6790

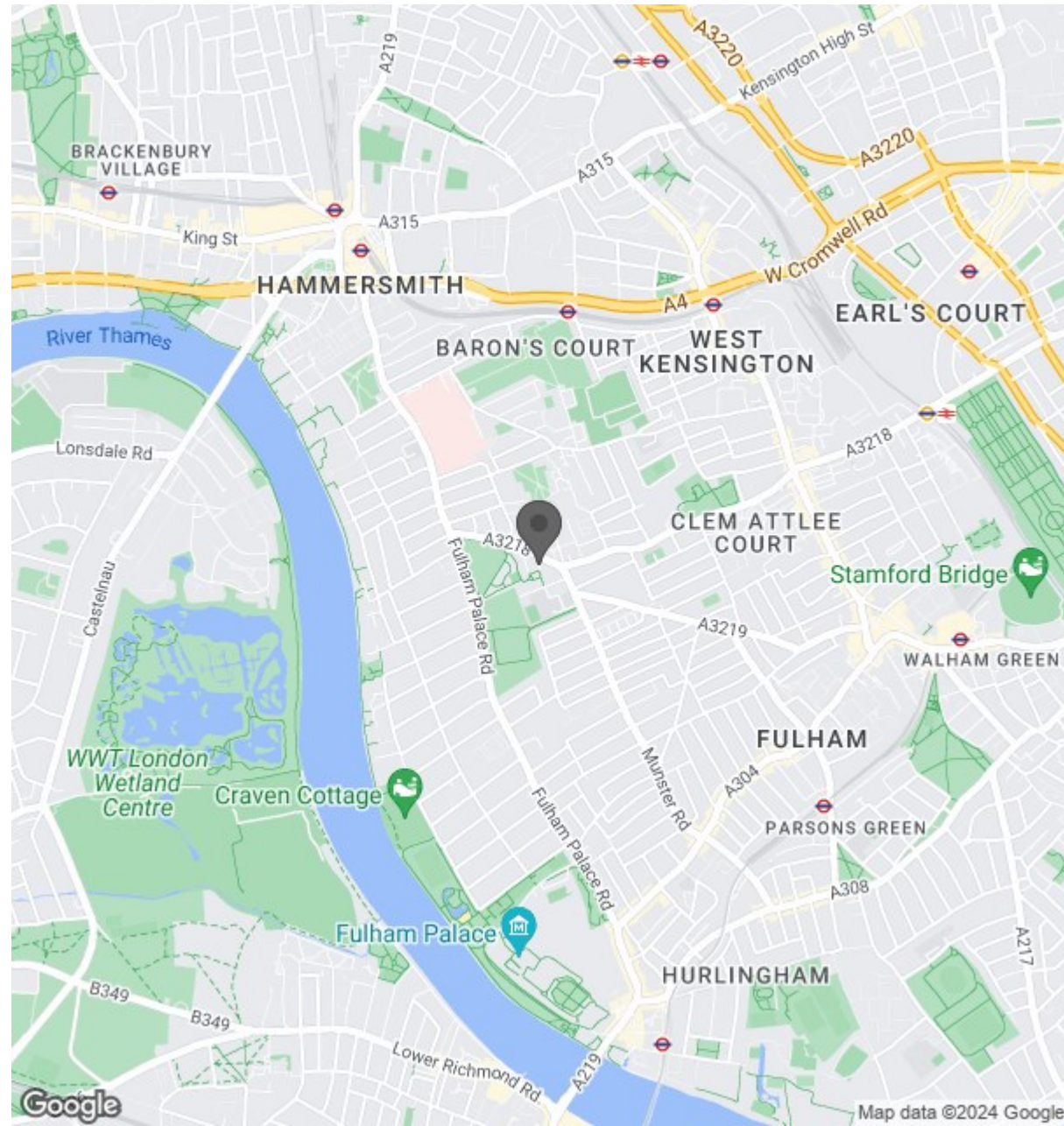
matthew@brik.co.uk







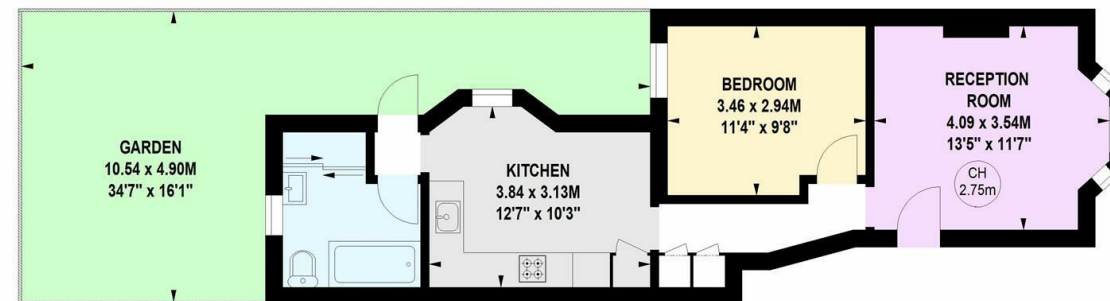
Location



Purcell Crescent, SW6

Approximate gross internal area
46.64 sq m / 502 sq ft

Key :
CH - Ceiling Height



Ground Floor

Not to scale, for guidance only and must not be relied upon as a statement of fact.
All measurements and areas are approximate only