

# Park Street

£1,390,000



# Park Street

£1,390,000

Leasehold

2 BED

Apartment

0000

SQ FT

0000

SQ M

Well positioned apartment with views of the tranquil waterways, this two bedroom apartment is located in the final phase of the reputable Chelsea Creek development, moments from the King's Road.

This stylish apartment is West facing, with views from the balcony over the water. The apartment offers an abundance of natural light through the large floor to ceiling windows. The internal space has been well thought out, comprising two large bedrooms with fitted wardrobes, en suite to master and a main bathroom, A shaker style kitchen with Siemens and Miele appliances, video intercom entry system, comfort cooling and heating, and ample storage.

Residents will also have exclusive access to the uniquely appointed Halcyon Club, featuring a fitness centre, swimming pool, spa with sauna and steam-room, a private cinema and meeting room. Its crowning glory is a 31st floor sky lounge and terrace with enviable views towards the city.

The apartment is within the Westwood building, and now ready to move into. EPC rating: B

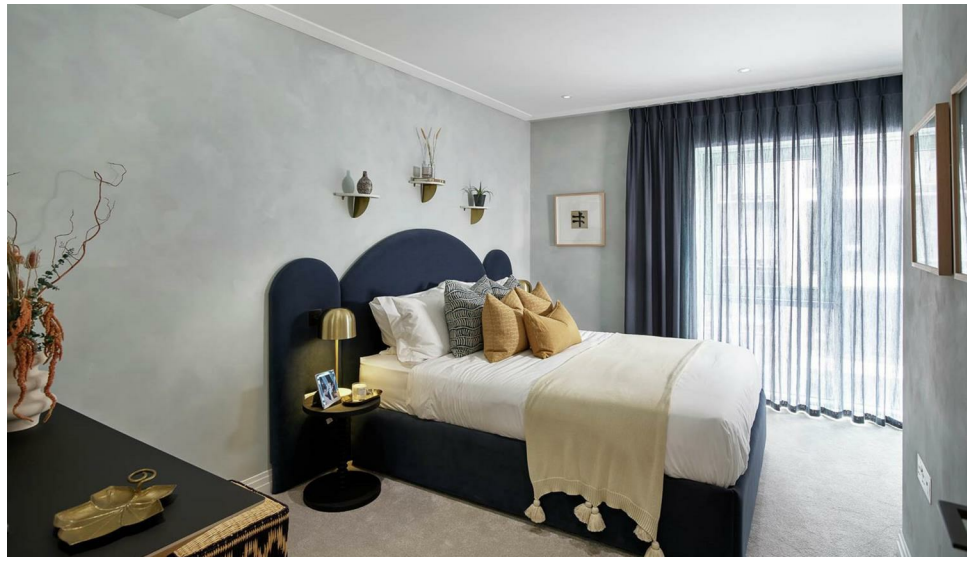
- 2 bedrooms
- 2 bathrooms
- Reception/ Kitchen
- Open plan living
- 24 Hour hotel-style Concierge
- The Halcyon Club featuring pool, gym, spa, roof terrace and lounge & cinema
- Ready to move into
- Award winning development
- Leasehold (986 years) / Council Tax band - H
- Approx. 846 sq ft (79 sq m )

**JAMES SIMS**

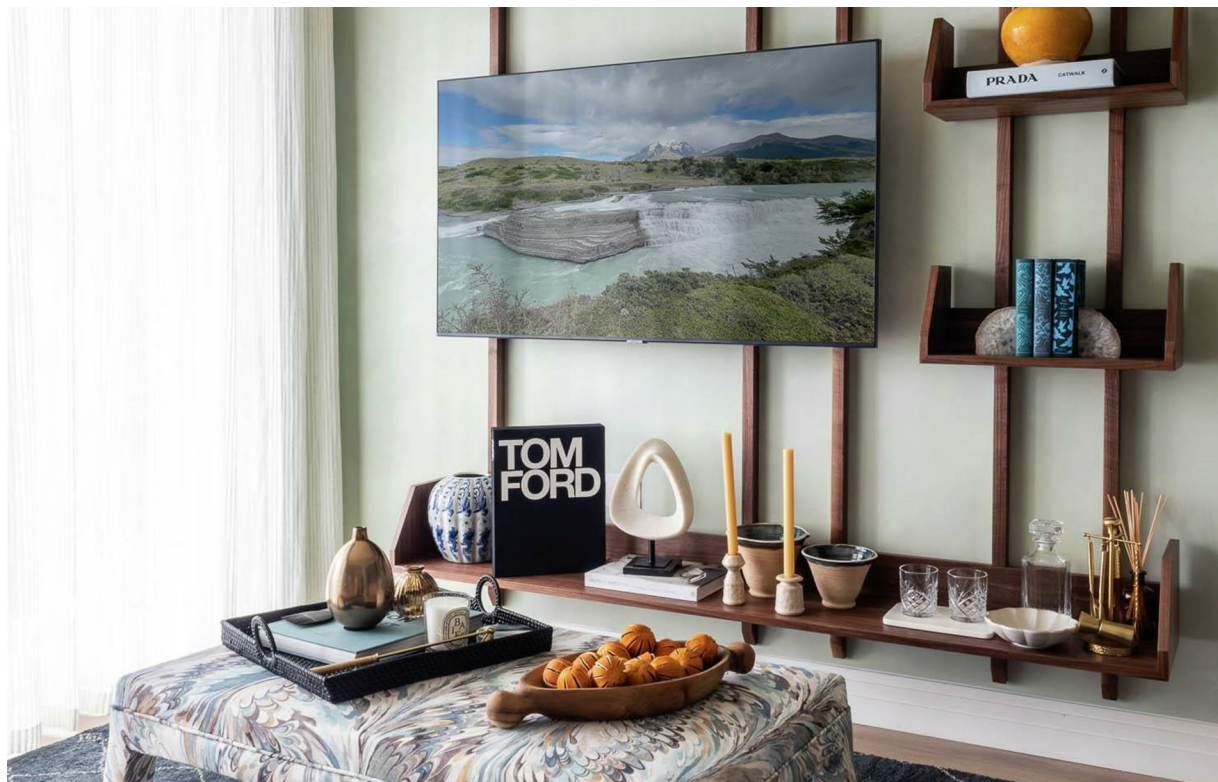
020 7384 6790

james@brik.co.uk

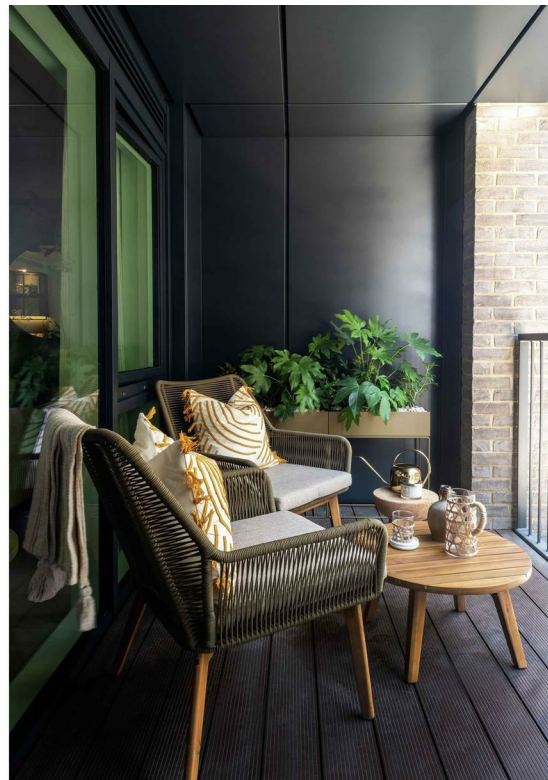
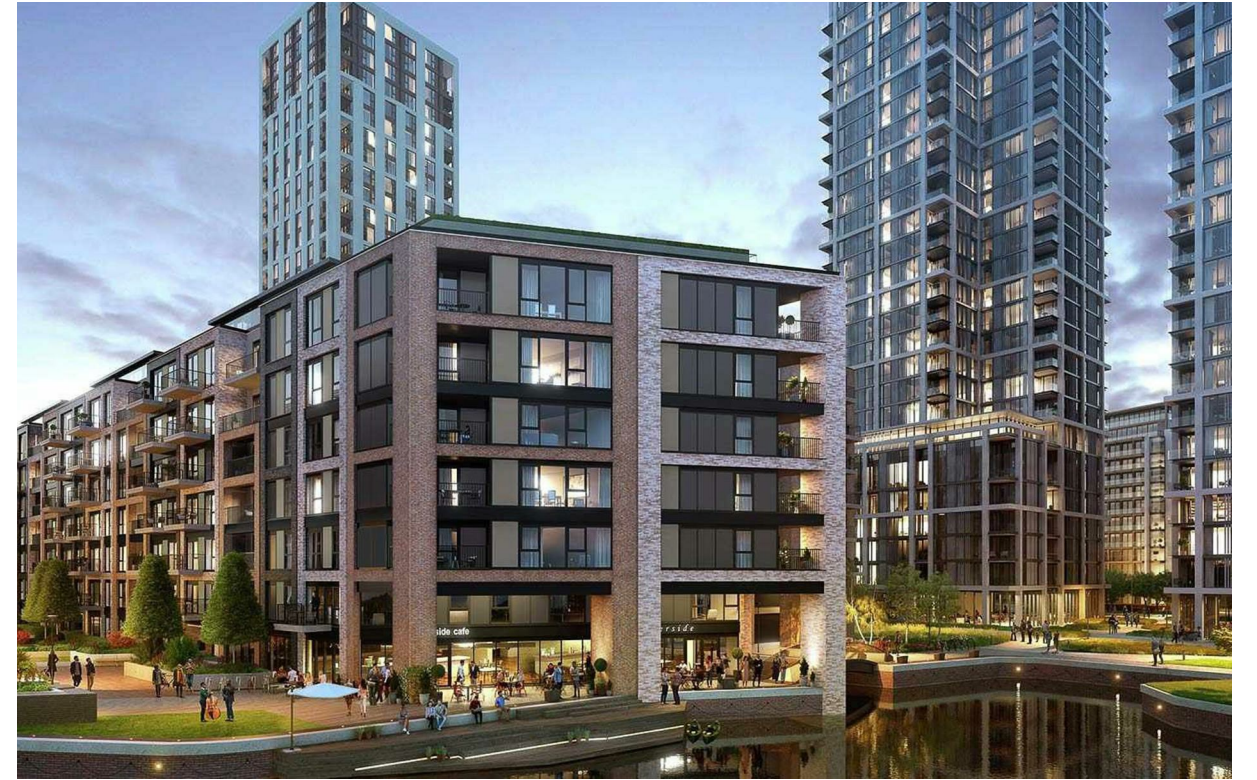














Location

