

# Breer Street

£1,250,000

BRIK









# Breer Street

£1,250,000 FREEHOLD	4 Bed HOUSE	1,494 SQ FT	139 SQ M	G COUNCIL TAX	£66,250 STAMP DUTY
------------------------	----------------	----------------	-------------	------------------	-----------------------

A detached house located near the Thames and South Park. This corner house offers flexible accommodation over 4 floors. The large kitchen/breakfast room is on the lower ground floor along with front and rear patios. The ground floor has a large double bedroom to the front with a balcony and ensuite shower room, to the rear is the reception room with access to a patio garden. The first floor comprises the main bedroom with ensuite and balcony, another double bedroom with fitted wardrobes. There is a fourth bedroom to the top floor with access to plenty of storage.

- ✓ Detached House
- ✓ Flexible accommodation
- ✓ Four bedrooms
- ✓ Three bathrooms
- ✓ Balconies
- ✓ Patios
- ✓ Approx. 1,494 sq ft (139 sq m)

Breer Street is conveniently located, moments from the picturesque South Park, Hurlingham Park and the riverside. Commuters benefit from easy access to a selection of transport links including Parsons Green and Fulham Broadway Underground stations, Imperial Wharf Mainline station, and numerous road links on both sides of the river.

A selection of shops, restaurants and other local amenities are located nearby on the New Kings Road and Fulham Broadway, while the Thames Path and Battersea Park offer additional leisure options close by.



Mathew Goss  
 SENIOR SALES ASSOCIATE  
 25 YEARS EXPERIENCE  
 020 7384 6790  
 mathew@brik.co.uk



















## FULHAM AREA GUIDE

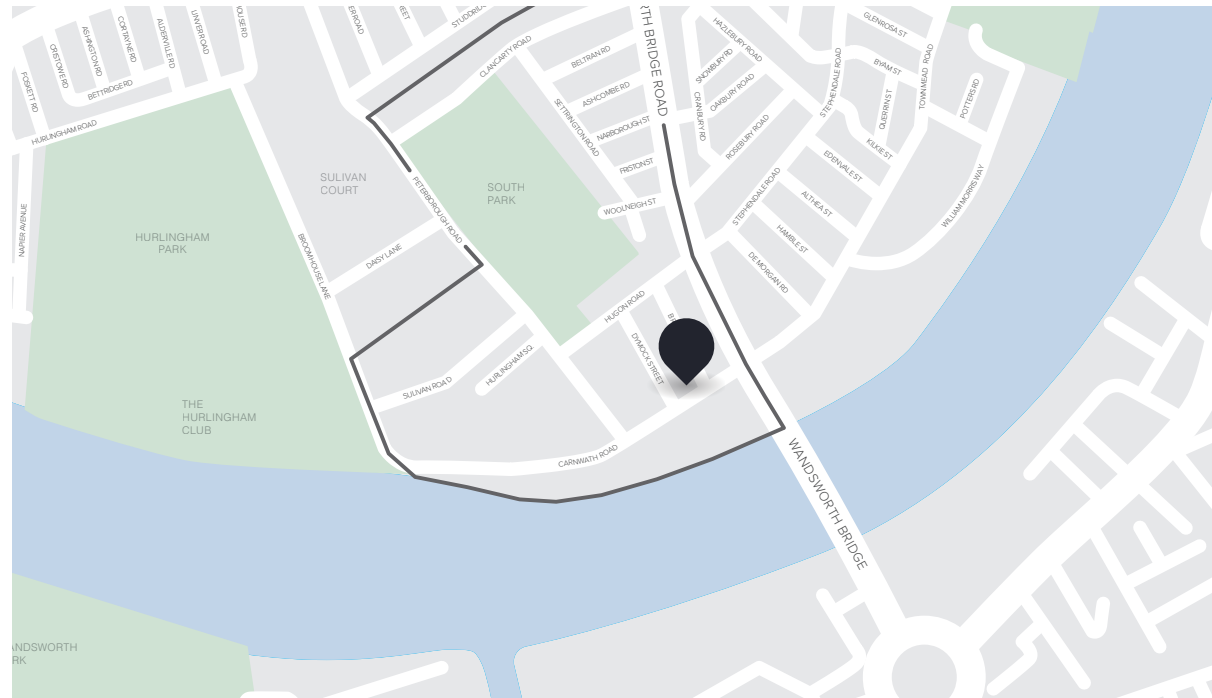
# South Park

The streets around South Park are somewhat varied in character, with the small grid of seven roads between the park and Wandsworth Bridge Road being the most sought after. Two brilliant schools grace this area, Thomas's on Hugon Road and the Lycee Francais on Clancarty Road, drawing in families from right across London.

The park itself opened in 1904, having previously been farming land. Once used as a training ground in World War II, when air raid shelters were also installed, it's now home to Fulham's only public cricket ground and four tennis courts. To book these contact the council's sports booking people at [sportsbookings@lbhf.gov.uk](mailto:sportsbookings@lbhf.gov.uk) or 020 7736 1735.

The walled park itself is the major draw and if you didn't know the area it would be easy to miss entirely. Recently it has gone through a large refit with a new arts centre and childrens playground.

This little triangle of roads is highly desirable. More affordable than the roads immediately off Parsons Green, yet conveniently located for access to South Park. Residents here will tell you they are the 'right' side of the busy Wandsworth Bridge Road.



### CLOSEST:

- 🚶 Parsons Green (18 mins)
- 🚶 Imperial Wharf (13 mins)
- 🚶 South Park (2 mins)

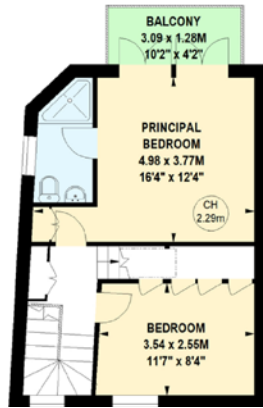
### KEY:

- 📍 Property location
- 'South Park' area of Fulham

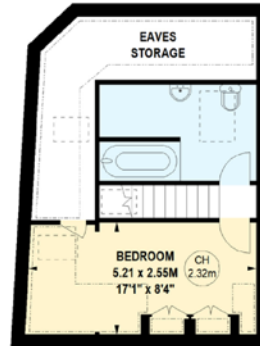
[Read all our Fulham area guides here](#)



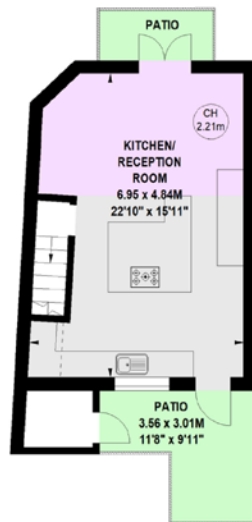




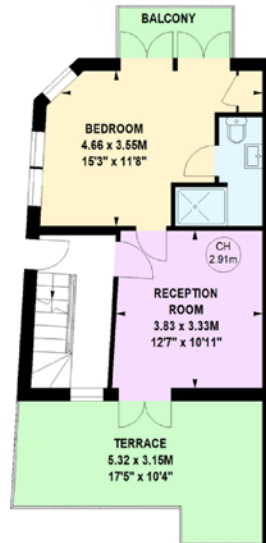
First Floor



Second Floor



Lower  
Ground Floor



Ground Floor