

# Breer Street

Guide Price £1,250,000



# Breer Street

£1,250,000

Freehold

4 BED

House - Detached

0000

SQ FT

0000

SQ M

This corner house offers flexible accommodation over 4 floors. The large kitchen/breakfast room is on the lower ground floor along with front and rear patios. The ground floor has a large double bedroom to the front with a balcony and ensuite shower room, to the rear is the reception room with access to a patio garden. The first floor comprises the main bedroom with ensuite and balcony, another double bedroom with fitted wardrobes. There is a fourth bedroom to the top floor with access to plenty of storage.

Breer Street is conveniently located, moments from the picturesque South Park, Hurlingham Park and the riverside. Commuters benefit from easy access to a selection of transport links including Parsons Green and Fulham Broadway Underground stations, Imperial Wharf Mainline station, and numerous road links on both sides of the river. A selection of shops, restaurants and other local amenities are located nearby on the New Kings Road and Fulham Broadway, while the Thames Path and Battersea Park offer additional leisure options close by.

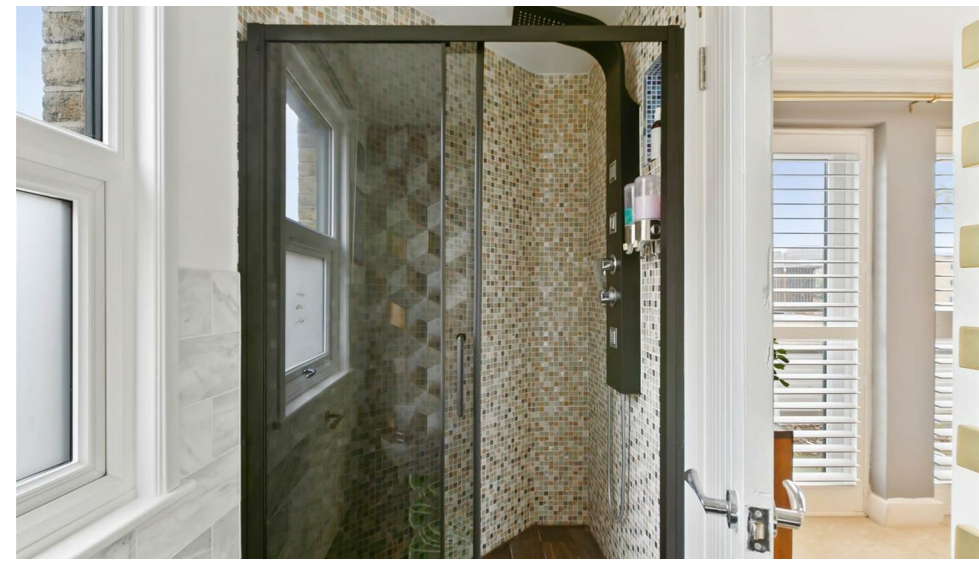
- Detached House
- Flexible accomadtion
- Four bedrooms
- Three bathrooms
- Balconies
- Patios
- Approx. 1,494 sq ft (139 sq m)
- EPC: D rating

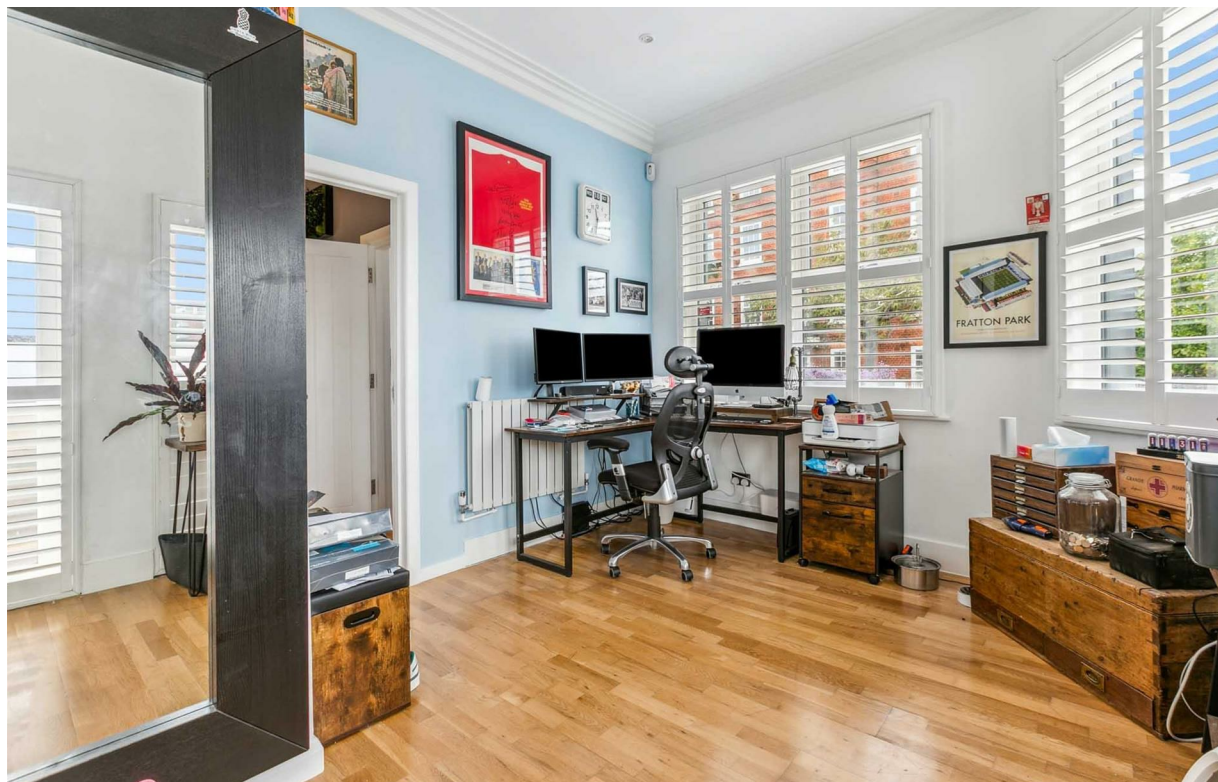
**MATHEW GOSS**

020 7384 6790

matthew@brik.co.uk







Location

