

Franklyn James



Bartlett Mews, Isle of Dogs, E14 3GS

£1,850 Per Calendar Month



Bartlett Mews, Isle of Dogs, E14 3GS

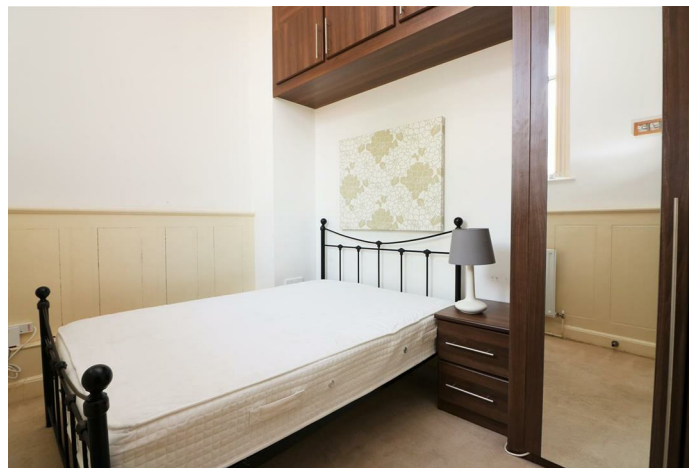
£1,850 Per Calendar Month

Located on the ground floor of a gated development, this generously sized one-bedroom apartment is offered fully furnished. The property features an inviting entrance hall, a spacious reception room, a large fully fitted kitchen with dining area, a double bedroom with built-in wardrobes, and a modern family bathroom.

Bartlett Mews is ideally situated just moments from Island Gardens DLR, providing excellent transport links to Canary Wharf and the City.

Description

- Offered furnished
- Located in a secure, gated development
- Spacious ground floor one bedroom apartment
- Bright and airy reception room
- Large fully fitted kitchen with dining area
- Double bedroom with built in wardrobes
- Modern three piece family bathroom
- Easy access to Canary Wharf and The City
- Walking distance to Millwall Park
- Close to Island Garden DLR

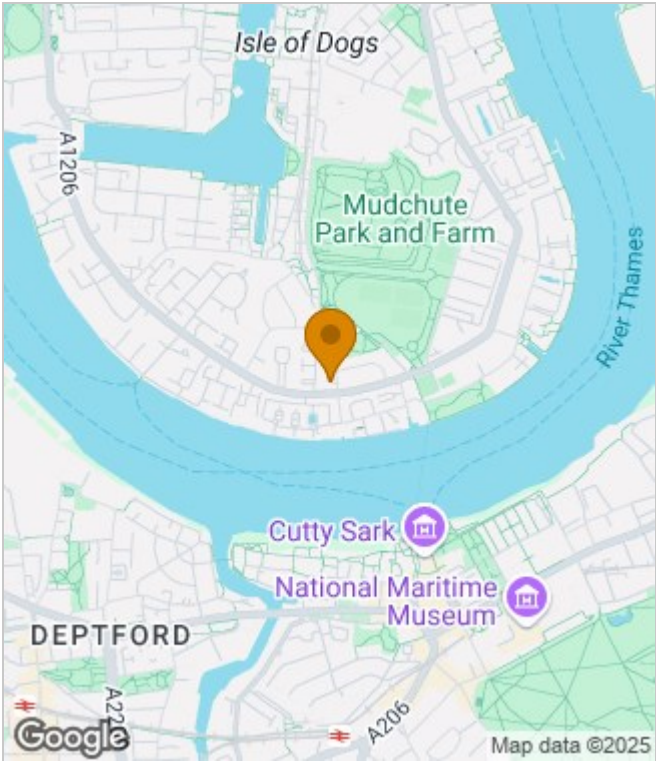


Furnished

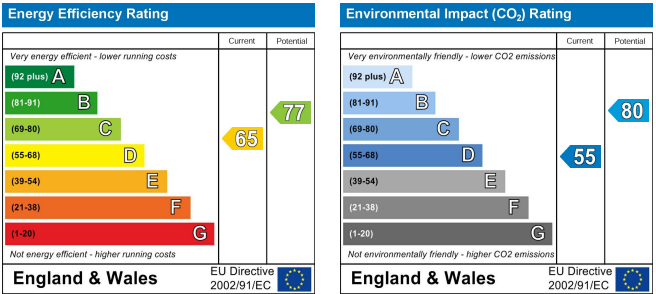
Council Tax Band: D

Available: 23rd June 2025

Area Map



Energy Performance Graph



These particulars, whilst believed to be accurate are set out as a general outline only for guidance and do not constitute any part of an offer or contract. Intending purchasers should not rely on them as statements of representation of fact, but must satisfy themselves by inspection or otherwise as to their accuracy. No person in this firms employment has the authority to make or give any representation or warranty in respect of the property.

Franklyn
James

60 Westferry Road, London, E14 8JE
Tel: 02070056080 Email: lettings@franklynjames.co.uk <https://www.franklynjames.co.uk>