

# Franklyn James



## 1 Forge Square

, London, E14 3GU

Asking Price £525,000

This exceptional two-bedroom penthouse, located in the highly sought-after Forge Square development in Canary Wharf, offers a luxurious living experience. Boasting a spacious master bedroom with an ensuite, the room opens directly onto a private terrace, providing a seamless indoor-outdoor flow. The second double bedroom offers generous space, while the large family bathroom is elegantly designed. The modern kitchen is fully equipped with top-of-the-line appliances, and the open-plan dining and living area creates a perfect setting for both relaxation and entertaining.

The penthouse is ideally located with outstanding transport links, offering easy access to the City and London City Airport. Mudchute Station is just a short walk away, and the river is only a five-minute stroll, making this property a rare find in one of London's most desirable locations.

Additional benefits include a concierge service, ensuring convenience and peace of mind.

- Penthouse apartment
- Under-floor heating
- Concierge service
- Large private terrace
- Gated development
- Chain free

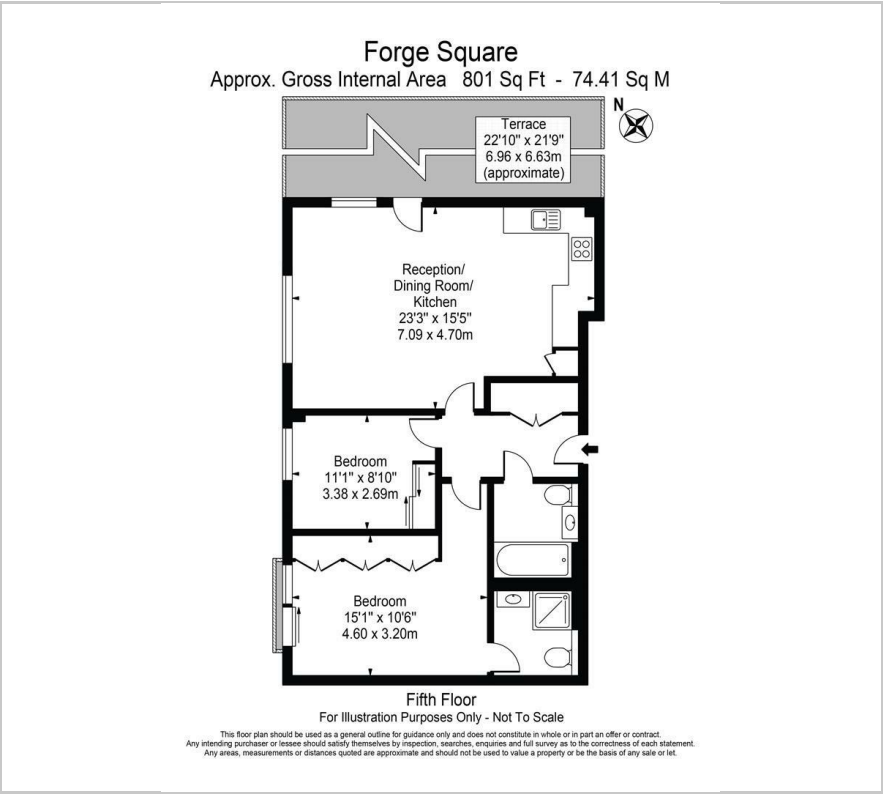
### Viewing

Please contact our Westferry Sales Office on 02070056080 if you wish to arrange a viewing appointment for this property or require further information.





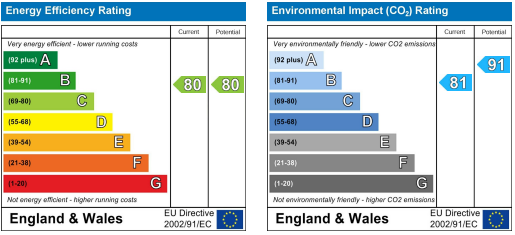
Floor Plan



Area Map



Energy Efficiency Graph



These particulars, whilst believed to be accurate are set out as a general outline only for guidance and do not constitute any part of an offer or contract. Intending purchasers should not rely on them as statements of representation of fact, but must satisfy themselves by inspection or otherwise as to their accuracy. No person in this firms employment has the authority to make or give any representation or warranty in respect of the property.