

Franklyn James



747 Commercial Road

, London, E14 7LE

Asking Price £450,000

Located on the second floor of the Grade II-listed 1930s Seamen's Refuge, this larger-than-average chain-free two-bedroom apartment offers a great blend of historic charm and modern living. The spacious living and dining area provides a comfortable space for both relaxation and entertaining, with large windows allowing plenty of natural light throughout.

The property is situated in a lively area with a variety of cafes, restaurants, and shops nearby. Residents can enjoy access to a well-equipped gym, a courtyard garden and large roof terrace with lift access, and the convenience of an on-site porter.

With excellent transport links via Limehouse and Westferry DLR stations, the property is just a short distance from Canary Wharf and the City.

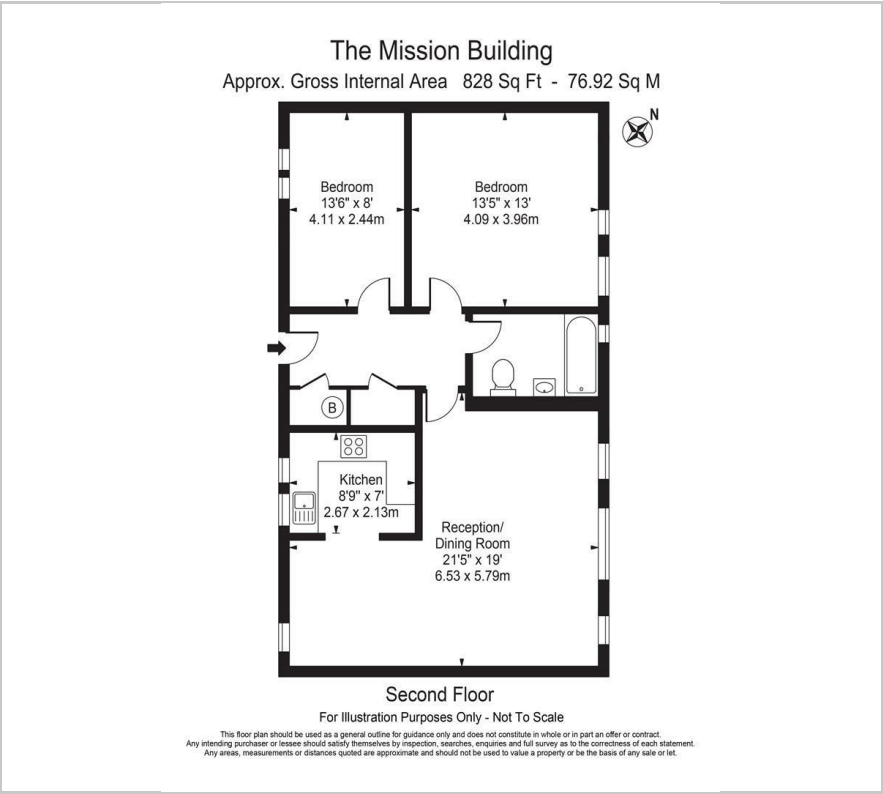
- Share of freehold
- Grade II Listed 1930s converted Seamen's Refuge
- Two double bedrooms
- Communal roof garden
- Residents gym
- On-site porter
- Close to Westferry and Limehouse DLR stations
- EWS1 compliant

Viewing

Please contact our Westferry Sales Office on 02070056080 if you wish to arrange a viewing appointment for this property or require further information.



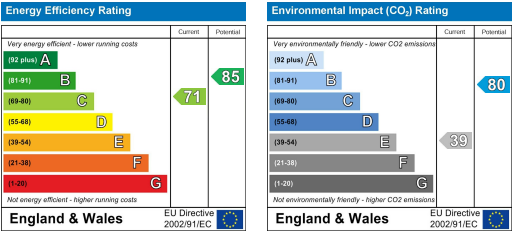
Floor Plan



Area Map



Energy Efficiency Graph



These particulars, whilst believed to be accurate are set out as a general outline only for guidance and do not constitute any part of an offer or contract. Intending purchasers should not rely on them as statements of representation of fact, but must satisfy themselves by inspection or otherwise as to their accuracy. No person in this firms employment has the authority to make or give any representation or warranty in respect of the property.