

Franklyn James



Zetland Street

, London, E14 6RB

Asking Price £625,000

A bright and spacious three-bedroom end of terrace family house. The accommodation comprises of a spacious lounge/diner, separate kitchen with access to the garden.

Upstairs comprises of three bedrooms with ample storage, and a family bathroom. The off-street parking completes this delightful house.

Chrisp Street Market is just a short walking distance away offering an abundance of local amenities. Close to Langdon Park DLR and local bus routes, giving excellent transport links to Canary Wharf and Central London.

- Freehold
- Off Street Parking
- End of Terrace
- Great location
- Perfect family home
- Easy access to Langdon Park DLR
- Close to local amenities
- Spacious accommodation

Viewing

Please contact our Westferry Sales Office on 02070056080 if you wish to arrange a viewing appointment for this property or require further information.



3



1

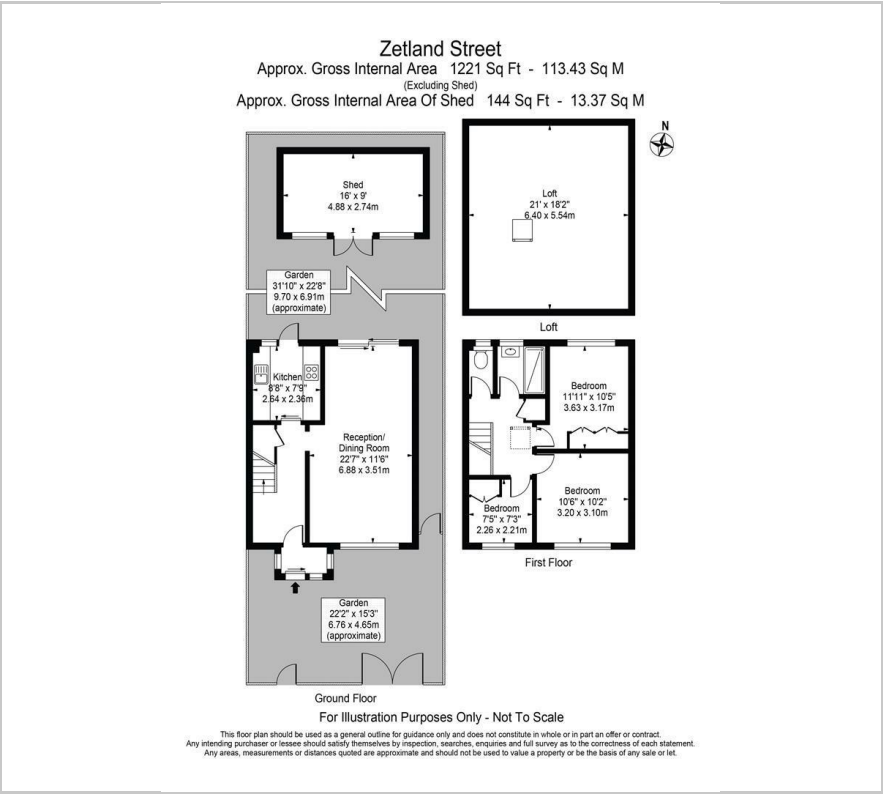


1

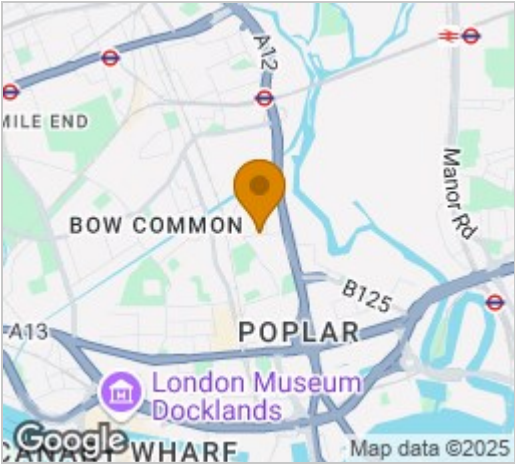


C

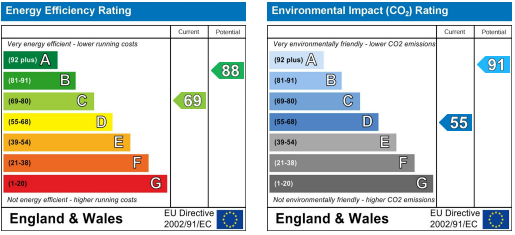
Floor Plan



Area Map



Energy Efficiency Graph



These particulars, whilst believed to be accurate are set out as a general outline only for guidance and do not constitute any part of an offer or contract. Intending purchasers should not rely on them as statements of representation of fact, but must satisfy themselves by inspection or otherwise as to their accuracy. No person in this firms employment has the authority to make or give any representation or warranty in respect of the property.