

Franklyn James



Saltwell Street

, London, E14 0DH

£525,000

This spacious four double-bedroom apartment is ideally situated just moments from Canary Wharf. The property features a well-maintained layout that includes a main entrance with an entry phone system, an entrance hall, a generously sized reception room, a kitchen, four double bedrooms, a bathroom, and a separate WC. This versatile property offers excellent potential for individual room rentals or could serve as the perfect home for a growing family.

Located within easy reach of local amenities, schools, and transport links, this property provides convenience and accessibility. Whether you are commuting to work or exploring the local area, you will find everything you need just a stone's throw away.

- Low service charge and ground rent
- Very spacious
- Low rise block
- Excellent location for Schools and amenities
- Close to Limehouse and Canary Wharf
- Fitted kitchen
- Communal grounds
- Ample storage

Viewing

Please contact our Westferry Sales Office on 02070056080 if you wish to arrange a viewing appointment for this property or require further information.



4



1

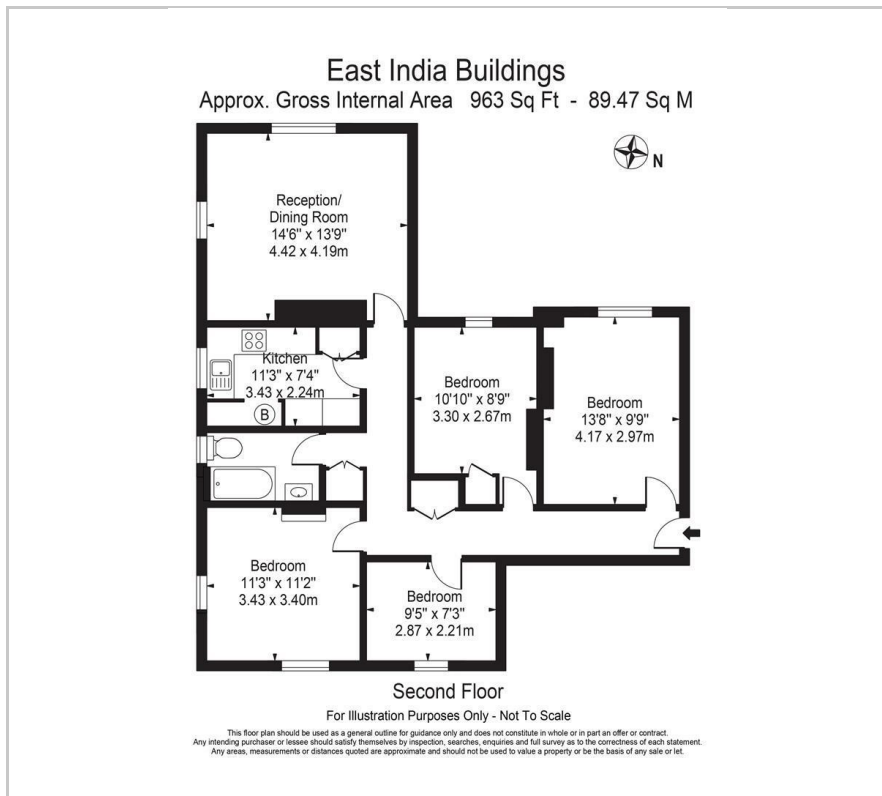


1



E

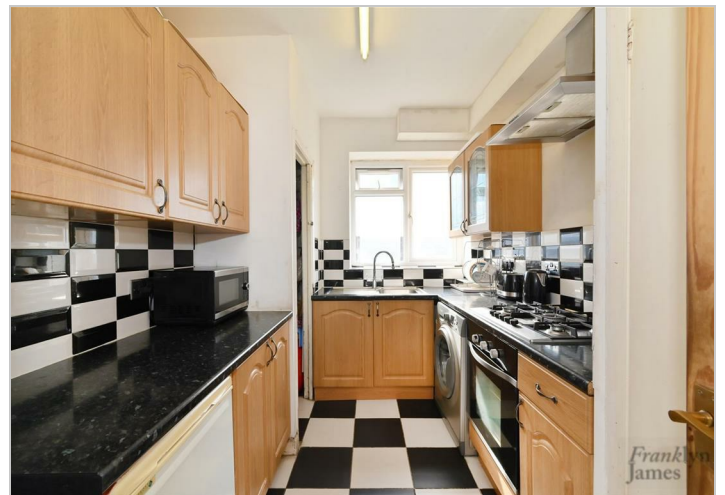
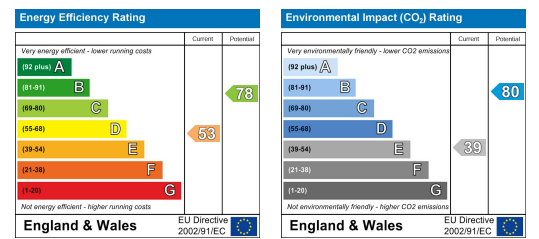
Floor Plan



Area Map



Energy Efficiency Graph



These particulars, whilst believed to be accurate are set out as a general outline only for guidance and do not constitute any part of an offer or contract. Intending purchasers should not rely on them as statements of representation of fact, but must satisfy themselves by inspection or otherwise as to their accuracy. No person in this firm's employment has the authority to make or give any representation or warranty in respect of the property.