

Franklyn James



Limeharbour

, London, E14 9LS

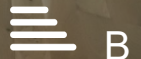
£1,900 Per Calendar Month

An exquisite one-bedroom apartment in City Tower, just moments from Crossharbour DLR, Jubilee line and the Elizabeth line. Positioned on the 1st floor, this property benefits from natural light, has modern finishes and neutral decor. It features an open plan kitchen/living area, a double bedroom with plenty of storage units, stylish bathroom, and private balcony. Residents benefit from a 24hr concierge and communal garden. Ideally located for quick access to Canary Wharf, the City, London City Airport, with local amenities and transport links.

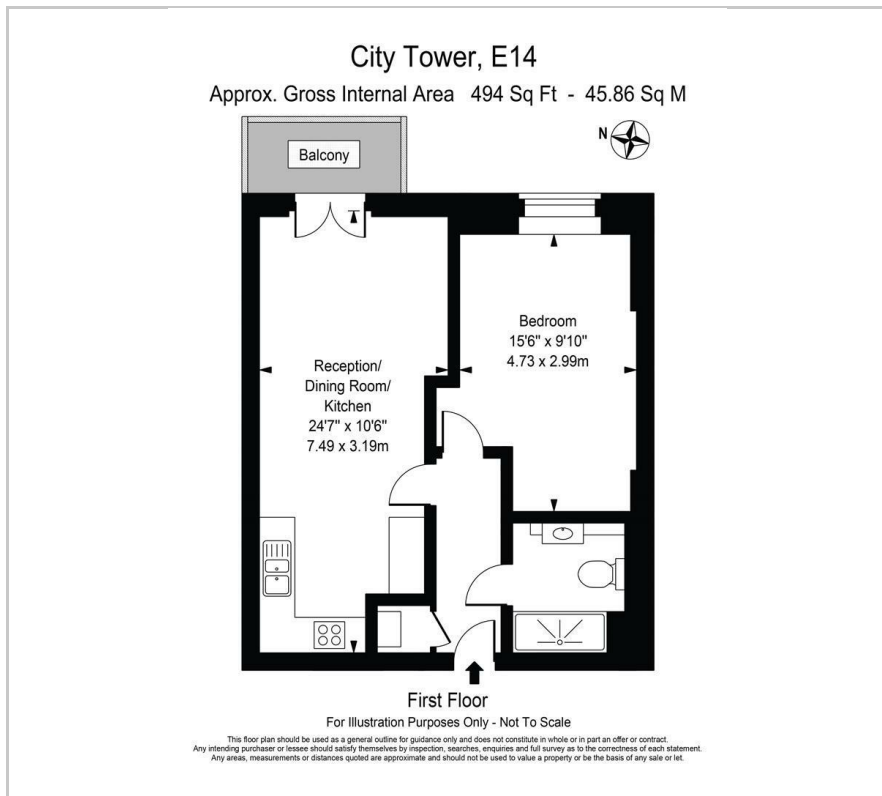
- Highly desirable development
- 24 hour concierge
- Easy access to canary Wharf
- Close to Jubilee & Elizabeth Line
- Open plan
- Communal gardens
- Opposite Crossharbour DLR
- Private balcony

Viewing

Please contact our Westferry Lettings Office on 02070056080 if you wish to arrange a viewing appointment for this property or require further information.



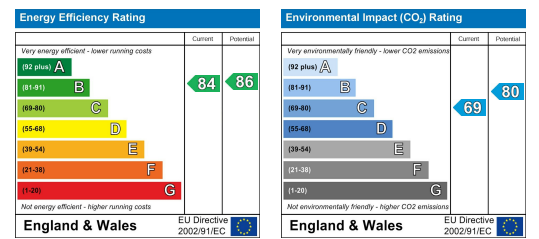
Floor Plan



Area Map



Energy Efficiency Graph



These particulars, whilst believed to be accurate are set out as a general outline only for guidance and do not constitute any part of an offer or contract. Intending purchasers should not rely on them as statements of representation of fact, but must satisfy themselves by inspection or otherwise as to their accuracy. No person in this firm's employment has the authority to make or give any representation or warranty in respect of the property.