

# Franklyn James



## 6 Lincoln Plaza

, London, E14 9BU

**£2,500 Per Calendar Month**

A one-bedroom apartment located in Talisman Tower, part of the popular Lincoln Plaza development in E14, the property comprises an open plan kitchen living area, a spacious bedroom with built in storage, bathroom and a covered balcony. Boasting contemporary living in a sophisticated yet functional environment, from air conditioning to bespoke bathrooms, SMEG kitchen appliances to stone tiled floors, this property is the epitome of city living.

Lincoln Plaza offers residents an array of lifestyle facilities. Residents benefit from a 4-storey winter garden/sky lounge on the 22nd floor, 24hr concierge, private cinema, health club, gym, business centre and a library. Ideally located in Canary Wharf which is well known for its shops, bars, and restaurants as well as the Jubilee Line and Crossrail is just a short walk away. South Quay DLR station is less than a 5-minute walk away for easy access to the City.

- Luxury Living
- Prime location
- Residence Facilities
- 24-hour concierge
- Winter Garden
- Must be viewed
- Furnished
- 10th Floor

### Viewing

Please contact our Westferry Lettings Office on 02070056080 if you wish to arrange a viewing appointment for this property or require further information.



1



1

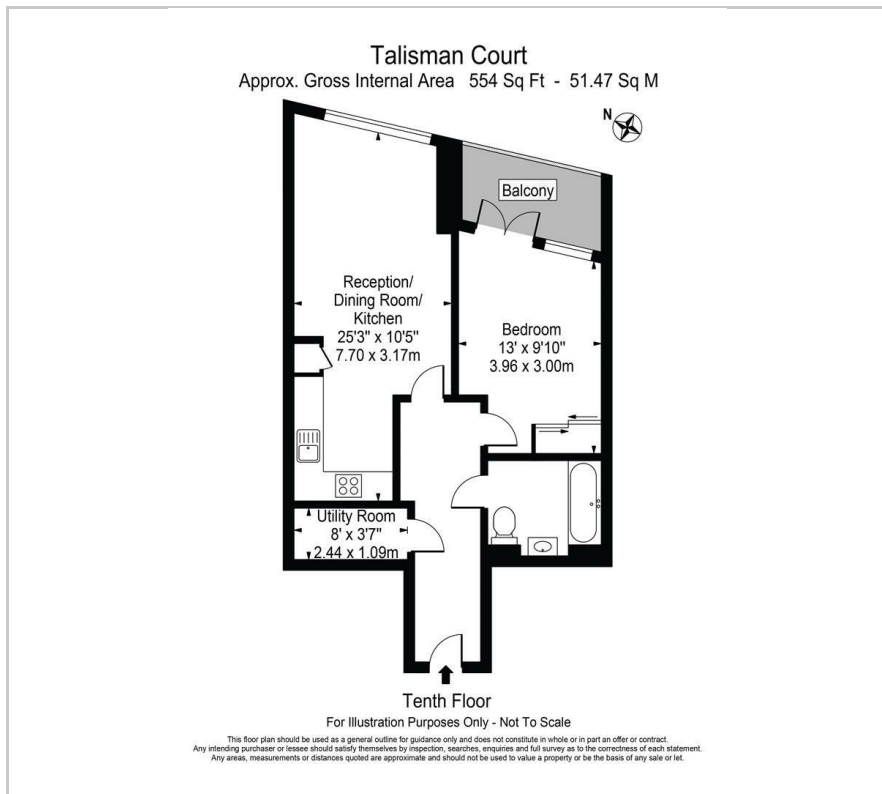


1



B

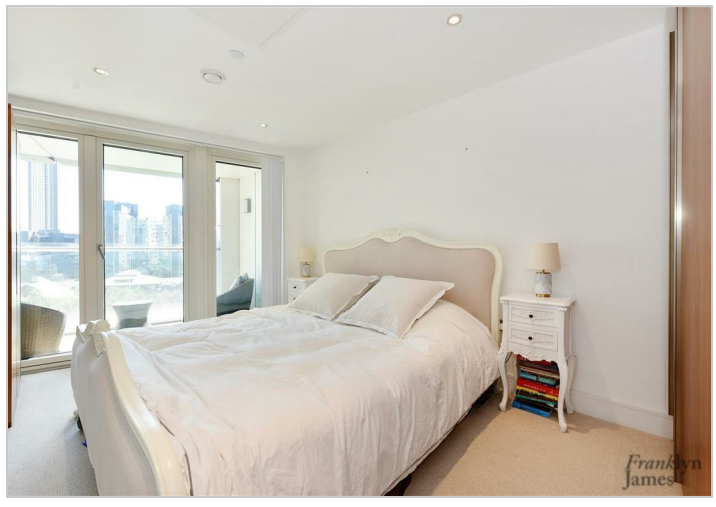
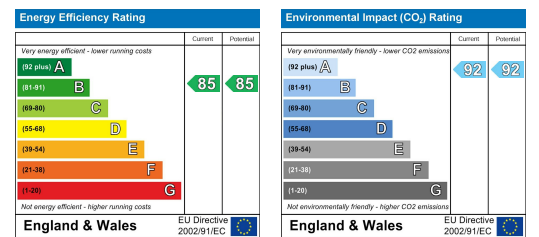
# Floor Plan



# Area Map



# Energy Efficiency Graph



These particulars, whilst believed to be accurate are set out as a general outline only for guidance and do not constitute any part of an offer or contract. Intending purchasers should not rely on them as statements of representation of fact, but must satisfy themselves by inspection or otherwise as to their accuracy. No person in this firm's employment has the authority to make or give any representation or warranty in respect of the property.