

# Franklyn James



## 12 High Street

, London, E15 2GT

£575,000

A stylish 3 bedroom 2 bathroom apartment located on the 10th floor of The Sky View Tower offering superb views of Canary Wharf and The city as well as the Olympic Park. This well equipped apartment features open plan kitchen/lounge, light and airy bedrooms and contemporary bathrooms. The complex provides a range of amenities, including a concierge service, a private residents' lounge, a fully equipped gym, and a cinema room. Residents can also unwind in the rooftop garden, enjoying panoramic city views. The apartment is conveniently located near the lush expanses of Queen Elizabeth Olympic Park and the vibrant Westfield shopping centre, home to numerous shops, bars, and restaurants. Excellent transport links are available with Pudding Mill Lane DLR, Stratford International, Stratford Underground, and Bow Road stations, providing easy access across London via the Central, Jubilee, and District lines, as well as Overground and National Rail services.

- No onward chain
- Communal Roof Terrace
- Gymnasium
- Concierge
- Fantastic Views
- Prime Location
- 10th Floor
- Long Lease
- EWS1 compliant (A1 rating)

### Viewing

Please contact our Westferry Sales Office on 02070056080 if you wish to arrange a viewing appointment for this property or require further information.



3



2



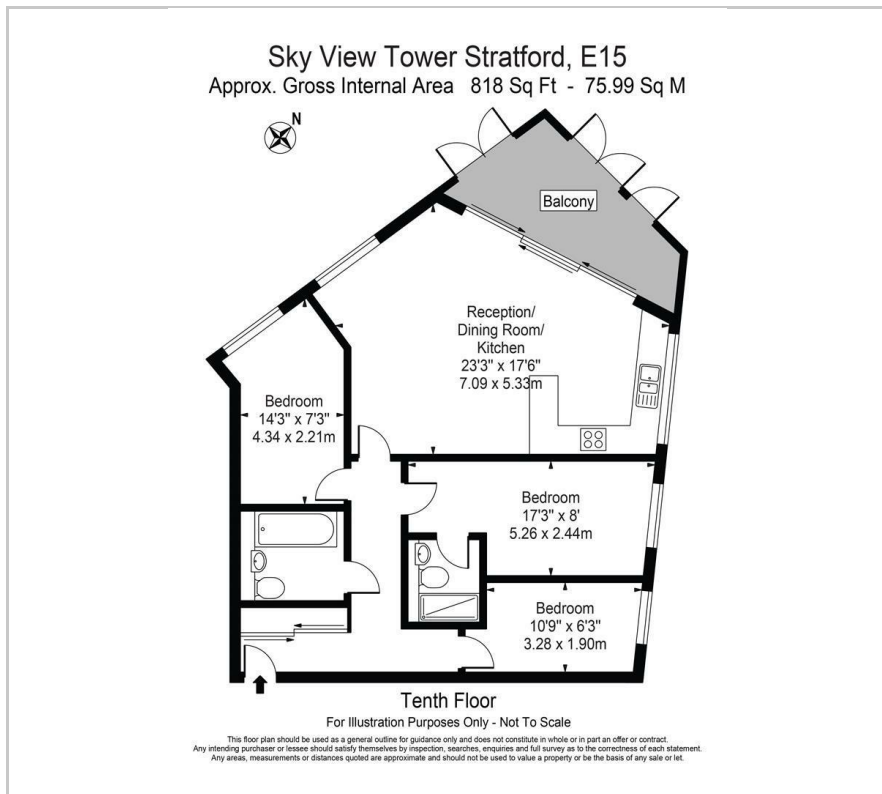
1



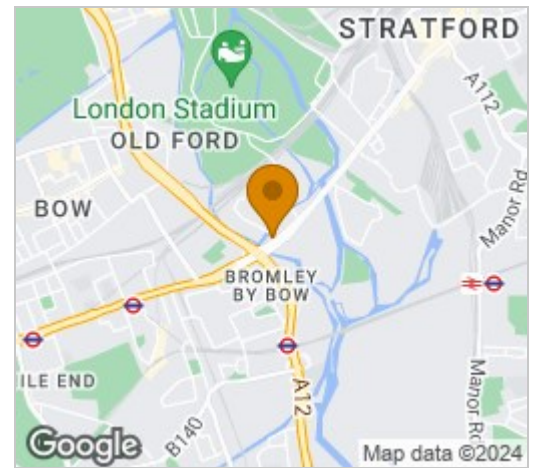
B



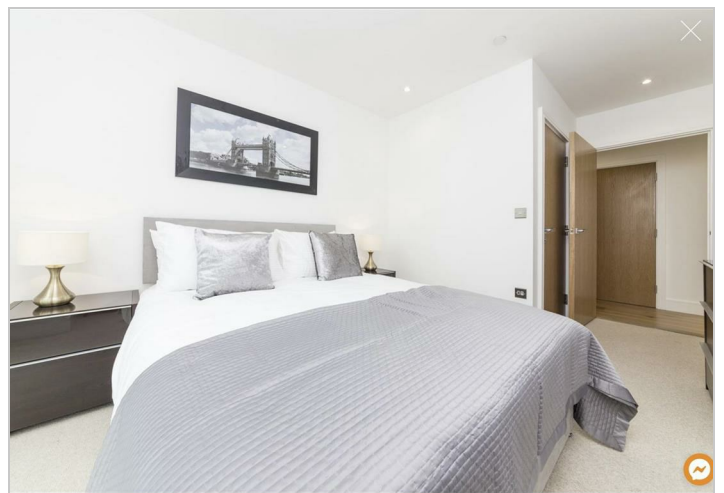
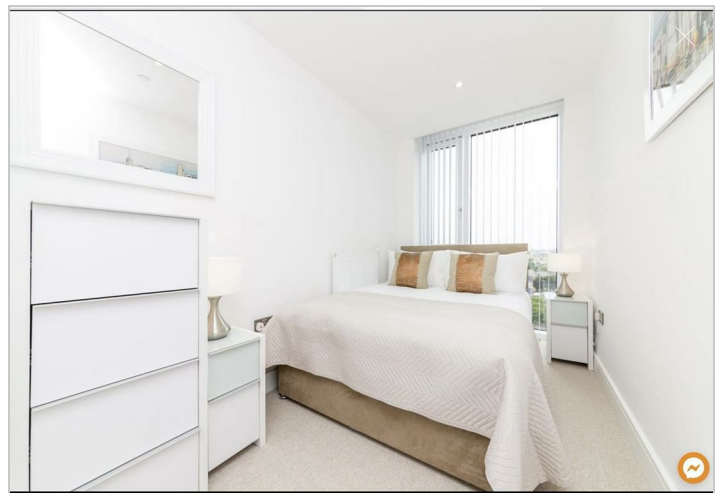
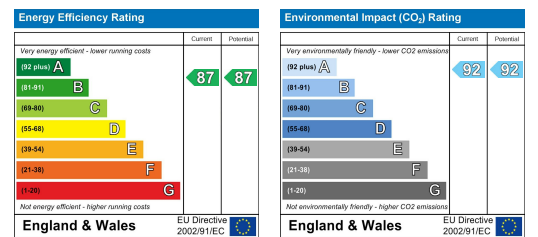
# Floor Plan



# Area Map



# Energy Efficiency Graph



These particulars, whilst believed to be accurate are set out as a general outline only for guidance and do not constitute any part of an offer or contract. Intending purchasers should not rely on them as statements of representation of fact, but must satisfy themselves by inspection or otherwise as to their accuracy. No person in this firm's employment has the authority to make or give any representation or warranty in respect of the property.