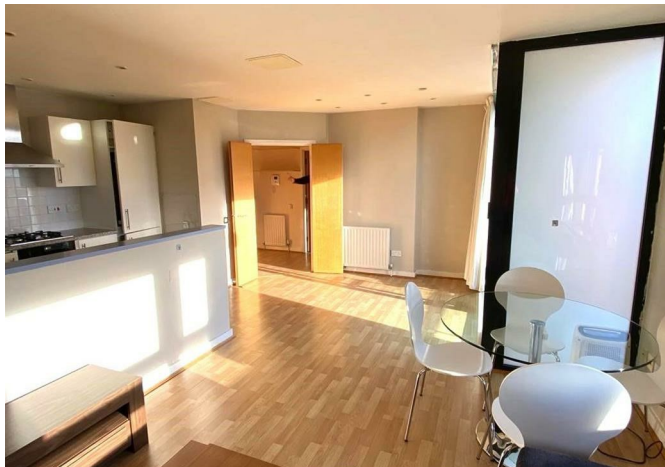


Franklyn James



Ocean Wharf, 60 Westferry Road, E14 8LN

£1,900 Per Calendar Month



Ocean Wharf, 60 Westferry Road, E14 8LN

£1,900 Per Calendar Month

A stunning park and river view is enjoyed from all principal rooms in this very well presented apartment in the popular Ocean Wharf development. This delightful property benefits from a large private balcony, modern integrated kitchen, one double bedroom with built-in wardrobes and additional access to the river view balcony and a Bathroom with separate bath and free standing shower.

This gated development is maintained to an extremely high standard and also enjoys the luxury of a residents only gym along with a concierge and parking for one car.

Canary Wharf Jubilee Line and Heron Quays DLR are within a 10 minute walk.

Description

- Large One Bedroom Apartment
- Large Balcony with Park and River Views
- Within Close proximity to Canary Wharf
- Residents Gym
- On Site Concierge
- Secure Gated Development
- Allocated Parking Space
- Modern
- Furnished
- Council Tax Band - E



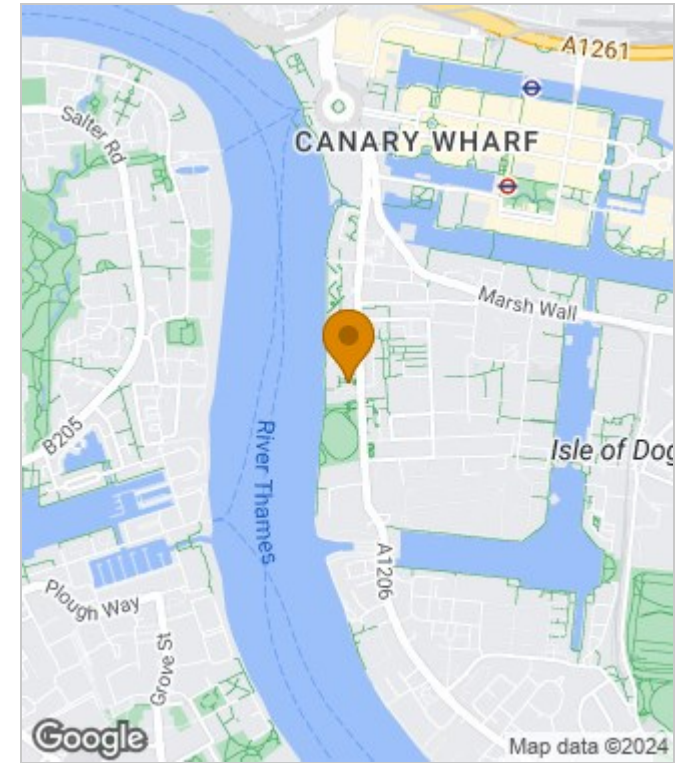
Furnished

Council Tax Band: E

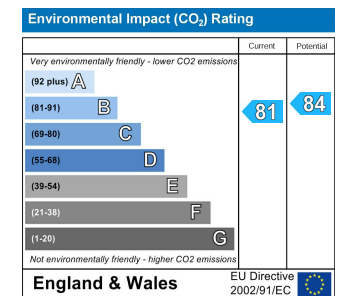
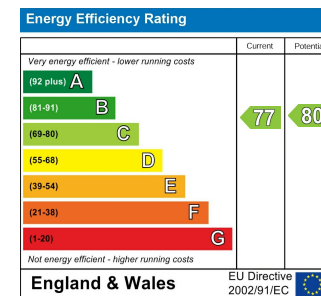
Available: 1st August 2024



Area Map



Energy Performance Graph



These particulars, whilst believed to be accurate are set out as a general outline only for guidance and do not constitute any part of an offer or contract. Intending purchasers should not rely on them as statements of representation of fact, but must satisfy themselves by inspection or otherwise as to their accuracy. No person in this firm's employment has the authority to make or give any representation or warranty in respect of the property.