

Franklyn James



Ross Way

, London, E14 7GG

Guide Price £350,000

GUIDE PRICE: £350,000 – £375,000 NO CHAIN

Franklyn James is delighted to offer this fantastic, second. floor, one bedroom apartment located within the CQ development.

The property boasts entrance hall with ample storage, an impressive open plan reception room with fully integrated kitchen from lounge there is access to a private South facing balcony.

Other accommodation comprises master bedroom with built in wardrobes second and main family bathroom.

Ideally located, being within moments to Limehouse DLR station and the historic Narrow Street. This apartment is an ideal first time buy or investment.

- CHAIN FREE
- ONE BEDROOM APARTMENT
- PRIVATE BALCONY
- OPEN PLAN RECEPTION/DINING AREA
- MODERN KITCHEN
- FAMILY BATHROOM
- MANY LOCAL AMENITIES
- 0.3m FROM LIMEHOUSE DLR STATION
- IDEAL FOR FIRST TIME BUYERS OR INVESTORS

Viewing

Please contact our Westferry Sales Office on 02070056080 if you wish to arrange a viewing appointment for this property or require further information.



1



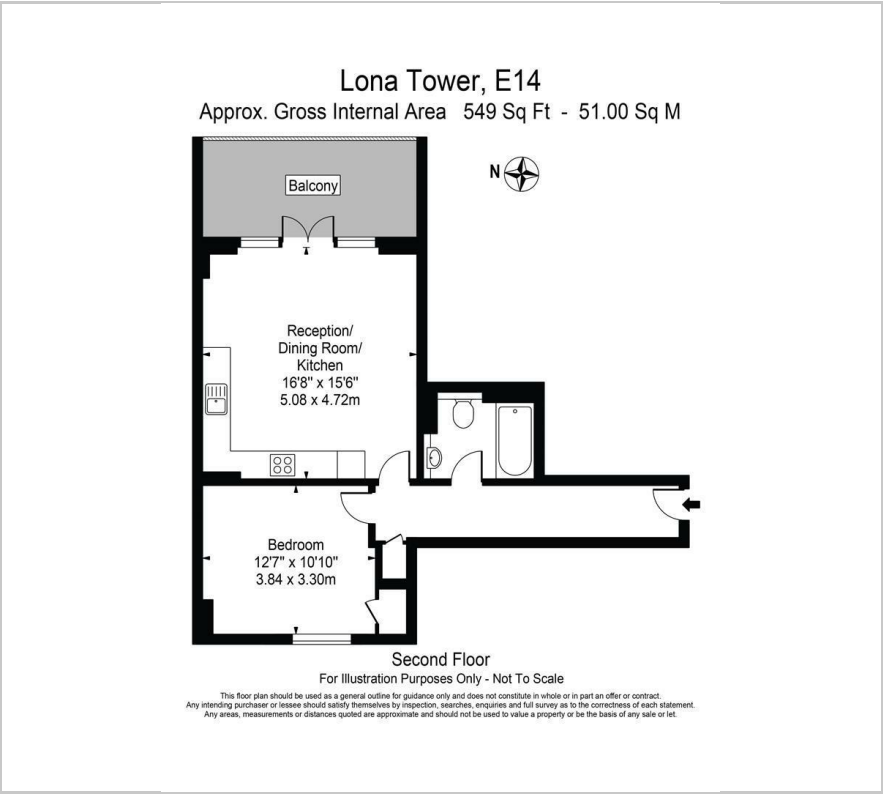
1



1



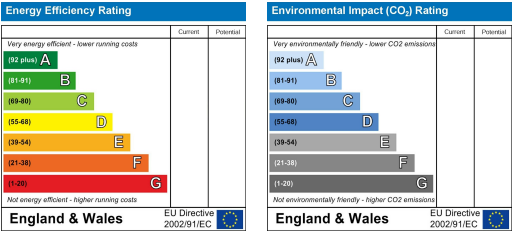
Floor Plan



Area Map



Energy Efficiency Graph



These particulars, whilst believed to be accurate are set out as a general outline only for guidance and do not constitute any part of an offer or contract. Intending purchasers should not rely on them as statements of representation of fact, but must satisfy themselves by inspection or otherwise as to their accuracy. No person in this firms employment has the authority to make or give any representation or warranty in respect of the property.