

# Franklyn James



## Claire Place

Isle Of Dogs, London, E14 8NJ

Offers In Excess Of £575,000

Immaculately presented and rare to market is this stunning freehold house, with a garage located minutes from Canary Wharf situated within a gated development on a private road. This beautifully presented, two double bedroom property has been much improved by the current owners which include, kitchen, bathroom and double glazing. Further benefits include a loft space with potential to convert (STPP), ample off-street parking with a private EV Charger and a lovely rear garden.

Located only a short walk from Canary Wharf providing an abundance of shops, bars and restaurants. Nearby transport links include South Quay DLR station, which connects to Canary Wharf for the Elizabeth Line and Jubilee Line and Bank for the City

Don't miss out on this rare opportunity to purchase this freehold property and call us now!

### Viewing

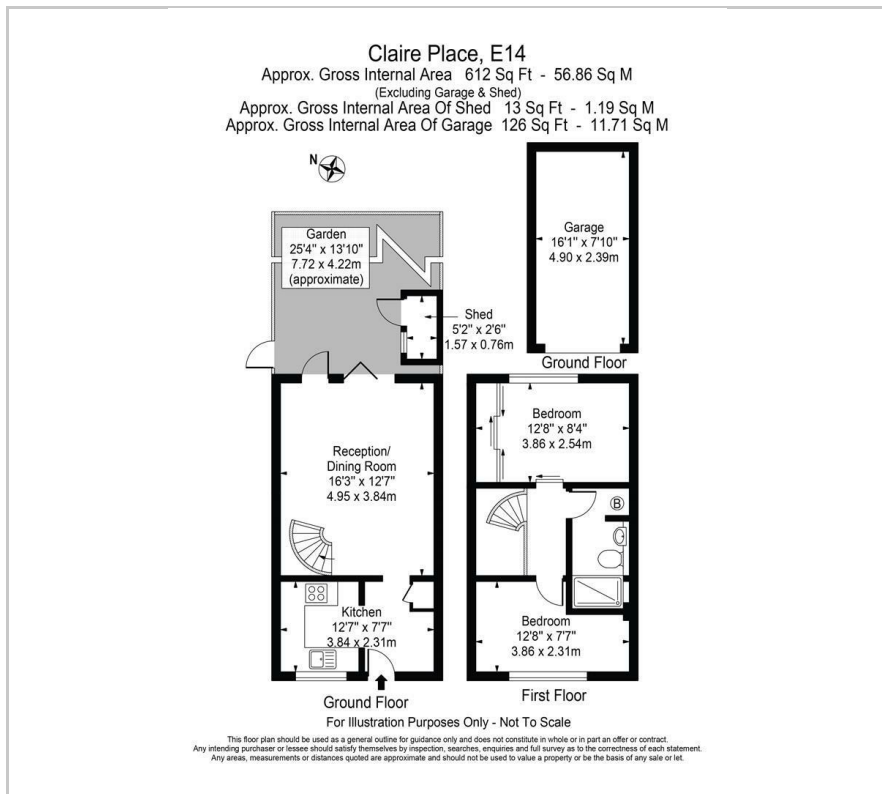
Please contact our Westferry Sales Office on 02070056080 if you wish to arrange a viewing appointment for this property or require further information.

- Freehold
- Two double bedrooms
- Private rear garden
- Large reception room
- Newly refurbished
- Gated development on a private road
- Off-street parking
- Close to Canary Wharf





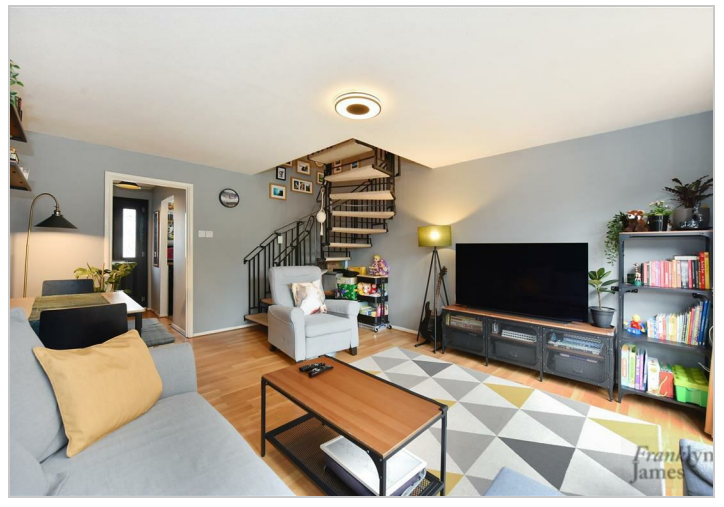
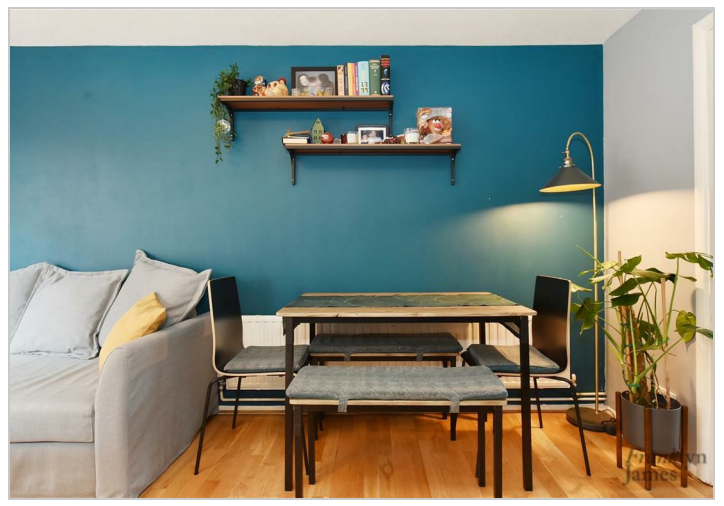
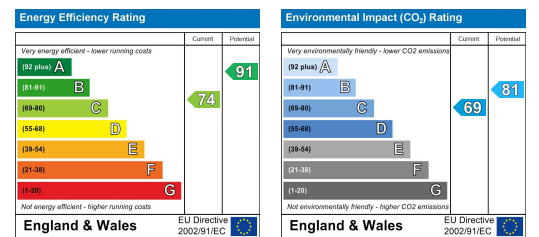
# Floor Plan



# Area Map



# Energy Efficiency Graph



These particulars, whilst believed to be accurate are set out as a general outline only for guidance and do not constitute any part of an offer or contract. Intending purchasers should not rely on them as statements of representation of fact, but must satisfy themselves by inspection or otherwise as to their accuracy. No person in this firm's employment has the authority to make or give any representation or warranty in respect of the property.