

Franklyn James



Chart House, Burrells Wharf Square

Isle of Dogs, London, E14 3TN

Offers In Excess Of £400,000

Bright and spacious duplex apartment, with expansive river views to be enjoyed from a wide private balcony. The apartment boasts six metre high ceilings, oak floors throughout, and is in immaculate condition. This property includes a share of freehold, exclusive underground parking, and onsite concierge service. It is next to the Masthouse Pier with swift boat service to central London, and near the DLR for fast access to Canary Wharf and the City. Situated on the third and fourth floors, the apartment comprises an ample reception area, an open plan kitchen with high quality integrated appliances, a contemporary four piece bathroom, and a master bedroom on the top level. Burrell's Wharf is a grade II listed development with an active community life, rare for most developments in the area. Historic grounds, the river, Mudchute Farm, the DLR, the Greenwich markets, all a short walk away, made of this area one of the best places to live in the UK in 2019, according to The Times.

Lease: 91 years remaining
Share of freehold
Ground rent: £10 per year
Service Charge: £4334 approximately
Council tax D

- Duplex one bedroom
- Double height ceilings
- Direct river views with private balcony
- Share of freehold
- Underground Parking
- Residents gym and swimming pool
- 24/7 onsite concierge
- No onward chain
- Boat service and DLR
- EWS1 Compliant with A1 rating

Viewing

Please contact our Westferry Sales Office on 02070056080 if you wish to arrange a viewing appointment for this property or require further information.



1



1

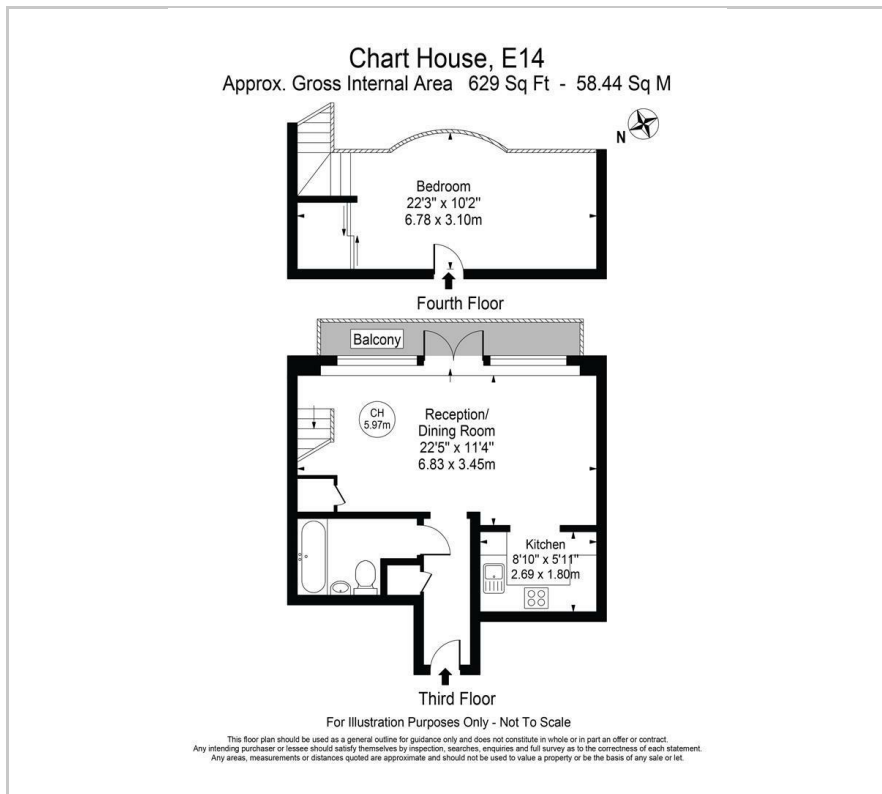


1



C

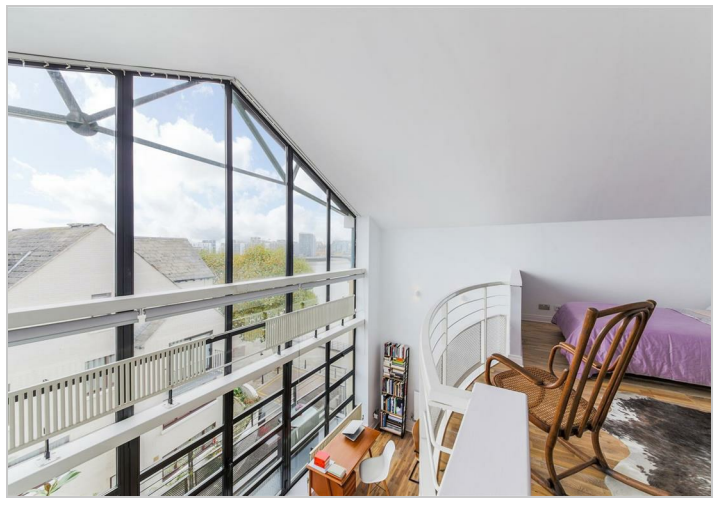
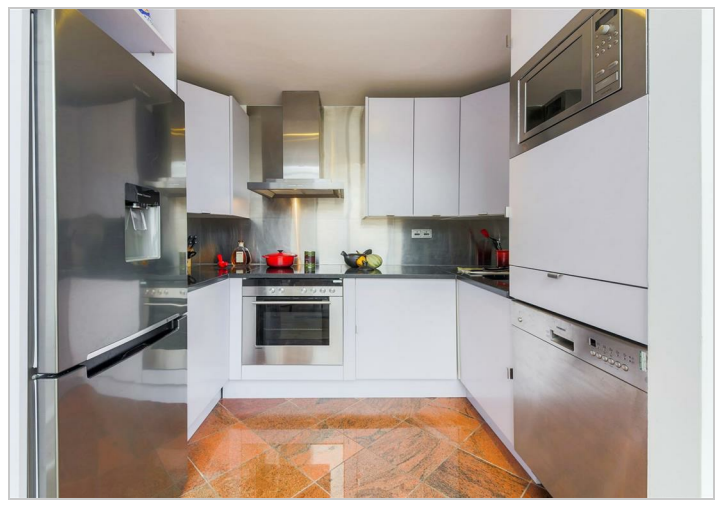
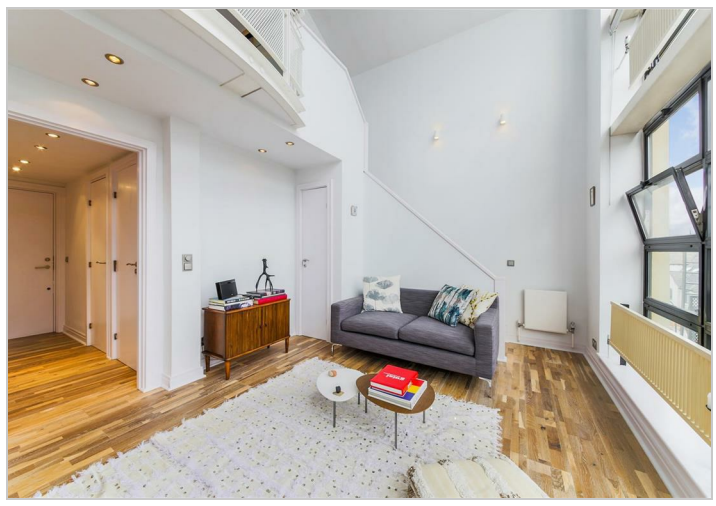
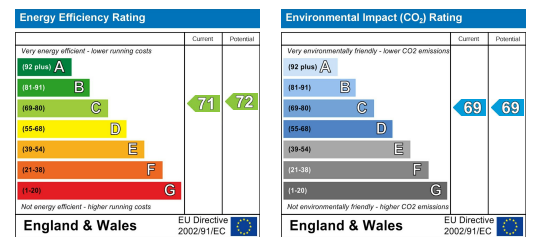
Floor Plan



Area Map



Energy Efficiency Graph



These particulars, whilst believed to be accurate are set out as a general outline only for guidance and do not constitute any part of an offer or contract. Intending purchasers should not rely on them as statements of representation of fact, but must satisfy themselves by inspection or otherwise as to their accuracy. No person in this firm's employment has the authority to make or give any representation or warranty in respect of the property.