

Franklyn James



7 Rolling Mills Mews

Limehouse, London, E14 7FQ

Asking Price £450,000

CHAIN-FREE. Exciting chance to own a sleek 1-bedroom apartment on the 6th floor of Limehouse's marina-side development. Revel in marina and London skyline views from your private south-facing balcony, elevated for an enhanced perspective. High-end features include stone worktops and ceramic tiles, crafting a fusion of style and quality.

Enjoy the communal roof garden and your personal balcony, offering both community and private outdoor spaces. Limehouse DLR, a brief 5-minute stroll away, connects seamlessly to Canary Wharf and The City of London. This prime location blends urban accessibility with a tranquil marina ambiance.

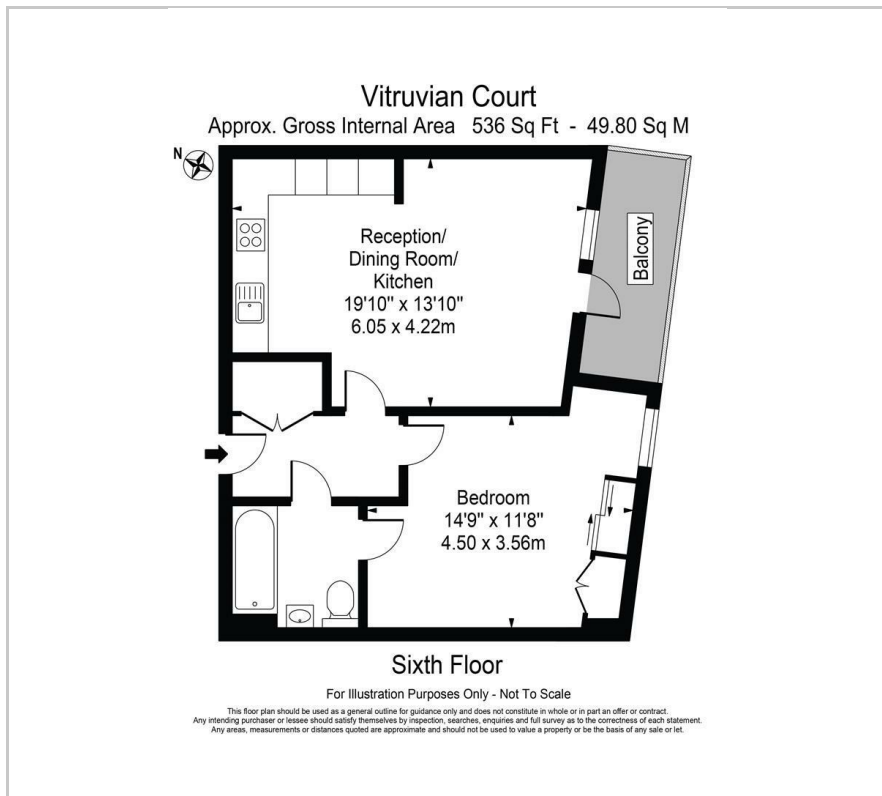
- Private balcony
- Views of Canary Wharf, Limehouse Basin & City
- Marina Side Development
- 200 year lease from 2013
- 0.2 miles from Limehouse station
- Communal Roof Garden
- Ideal for first time buyers and/or investors
- Vendor is willing to sell fully furnished

Viewing

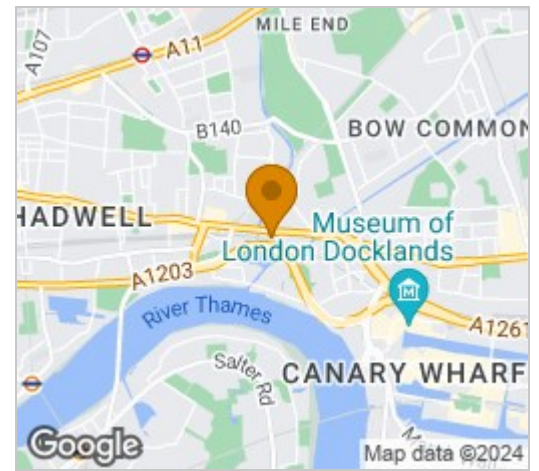
Please contact our Westferry Sales Office on 02070056080 if you wish to arrange a viewing appointment for this property or require further information.



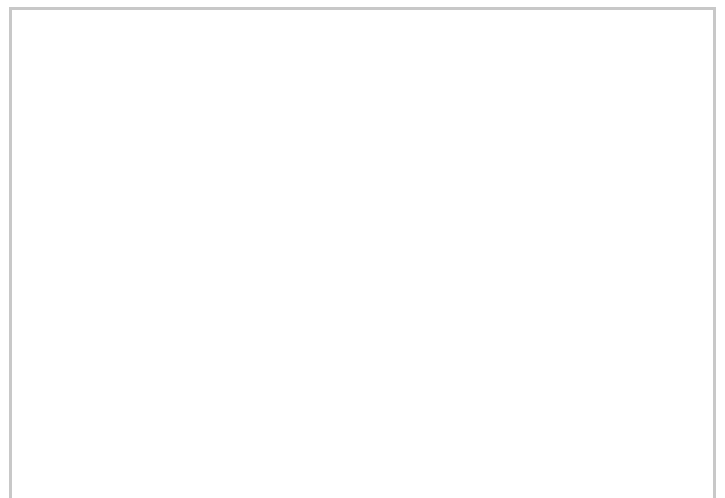
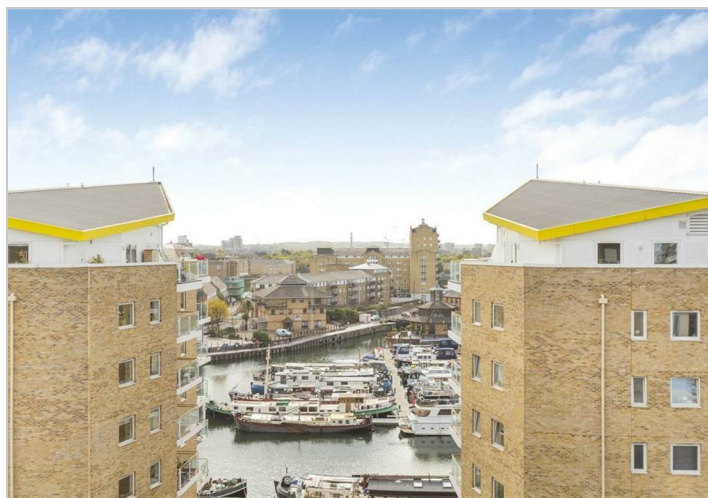
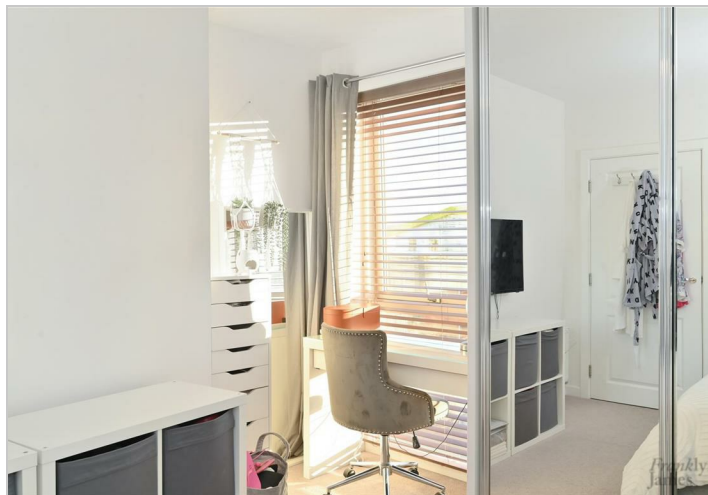
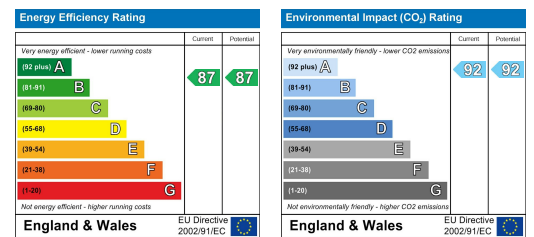
Floor Plan



Area Map



Energy Efficiency Graph



These particulars, whilst believed to be accurate are set out as a general outline only for guidance and do not constitute any part of an offer or contract. Intending purchasers should not rely on them as statements of representation of fact, but must satisfy themselves by inspection or otherwise as to their accuracy. No person in this firm's employment has the authority to make or give any representation or warranty in respect of the property.