

Franklyn James



St. Davids Square

, London, E14 3WE

£700,000

Nestled within the esteemed St. David's Square development near Island Gardens DLR in the Isle of Dogs, this spacious 2-bedroom, 2-bathroom apartment offers a serene riverside haven with South/Southwest-facing views that provide a constant connection to the flowing River Thames. The abundant natural light floods every room, creating a warm and inviting atmosphere, enhanced by floor-to-ceiling windows.

The thoughtfully designed layout includes a river-facing balcony with views of Greenwich, generous sized separate kitchen and lounge areas, two double bedrooms with one benefiting from an en-suite bathroom for added privacy and convenience.

St. David's Square's desirable location features the Island Gardens DLR nearby offering reliable connections to Canary Wharf and The City, and the Greenwich Foot Tunnel provides pedestrian access beneath the river to the heart of Greenwich.

Residents of this development enjoy an array of amenities, including a 24-hour concierge service, a well-equipped gym, and a welcoming swimming pool. Expansive communal grounds and gardens provide tranquil outdoor spaces, and the Thames Path, close by, beckons for riverside strolls.

Local convenience stores and amenities are within easy reach, simplifying daily living. The property also includes the valuable addition of an allocated parking space and is available chain-free for your convenience.

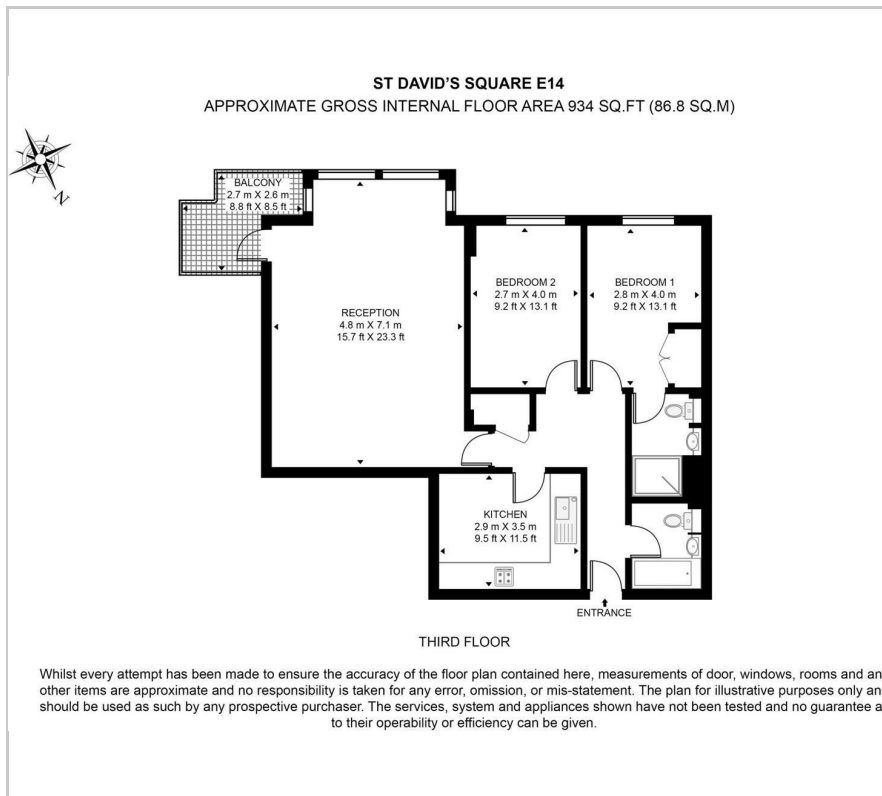
- Spacious two bedroom apartment
- Two bathrooms
- Secure parking
- Stunning river views
- Prime location
- Close to Island Gardens DLR station
- Long lease
- Chain free
- 24 hour concierge
- Full range of resident facilities

Viewing

Please contact our Westferry Sales Office on 02070056080 if you wish to arrange a viewing appointment for this property or require further information.



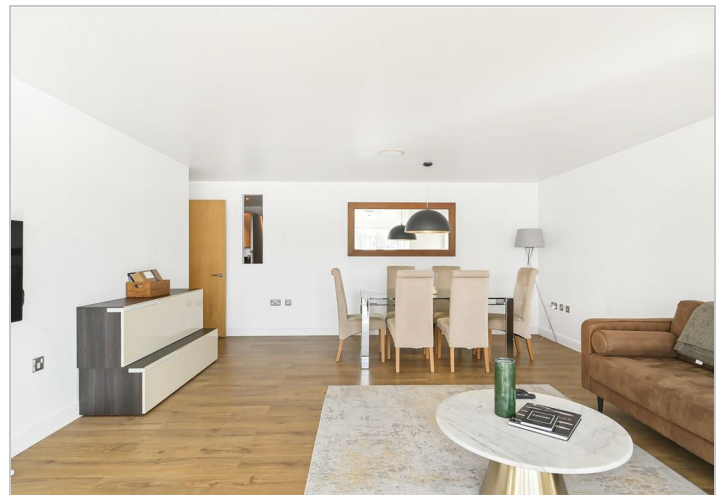
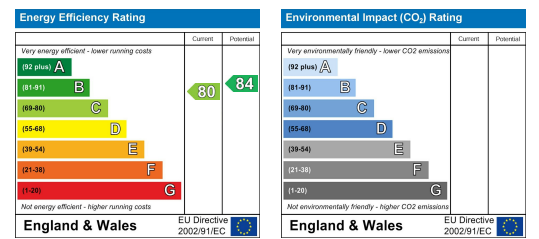
Floor Plan



Area Map



Energy Efficiency Graph



These particulars, whilst believed to be accurate are set out as a general outline only for guidance and do not constitute any part of an offer or contract. Intending purchasers should not rely on them as statements of representation of fact, but must satisfy themselves by inspection or otherwise as to their accuracy. No person in this firm's employment has the authority to make or give any representation or warranty in respect of the property.