

404, 2 Great George Street, Leeds, LS1 3BW

£229,995

SW
RESIDENTIAL

- Grade II Listed Building
- Protected by ICW 10 year warranty
- Doorman
- Concierge service
- Double bedroom
- Separate kitchen
- Large light and airy living room
- Sonos surround sound with ceiling mounted speakers throughout
- Residents Gym
- Communal Roof Terrace With City Views

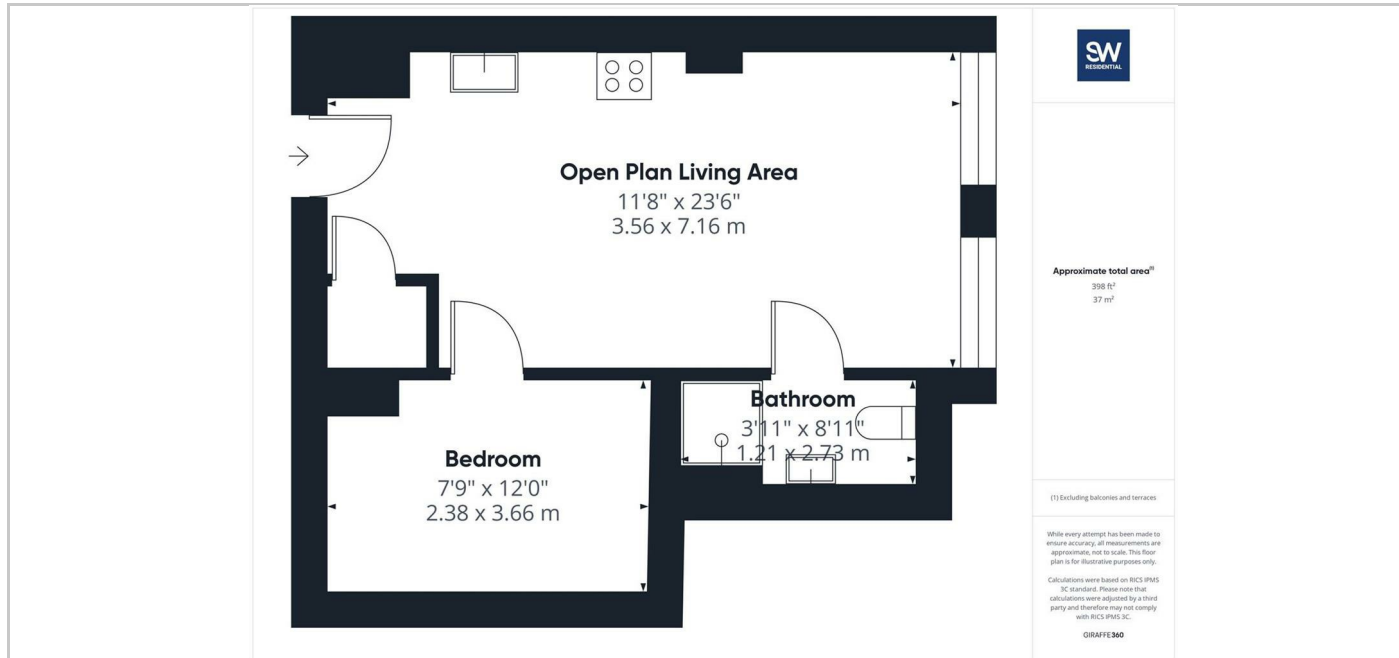
THE PROPERTY

A fantastic opportunity to purchase this spacious one bedroom apartment at the sought after 2 Great George Street development in the heart of Leeds City Centre.

With a modest service charge and no ground rent this property is a gem of an investment and is sure to bring in a good rental return in this luxury development.

The accommodation consists of an open plan living area flooded with light from the floor to ceiling windows. A separate bedroom and contemporary bathroom, both of which are accessed from the living area. The living area also has access to the utility cupboard which houses the hot water cylinder and has plumbing for a washing machine.

In addition to the fantastic space that this apartment offers, the apartment also includes access to the communal facilities available within the development including a residents only gym on the ground floor, concierge services and access to the communal rooftop terrace providing outdoor relaxation space along with breathtaking City views.



SITUATION

Directions

6th Floor Central Square, 29 Wellington Street, West Yorkshire, LS1 4DL
Tel: 0113 221 6000 Email: residential@sw.co.uk