

401, 2 Great George Street, Leeds, LS1 3BW

£285,000

SW
RESIDENTIAL

- Grade II Listed Building
- Protected by ICW 10 year warranty
- Doorman
- Concierge service
- Double bedroom
- Separate kitchen
- Large light and airy living room
- Sonos surround sound with ceiling mounted speakers throughout
- Residents Gym
- Communal Roof Terrace With City Views

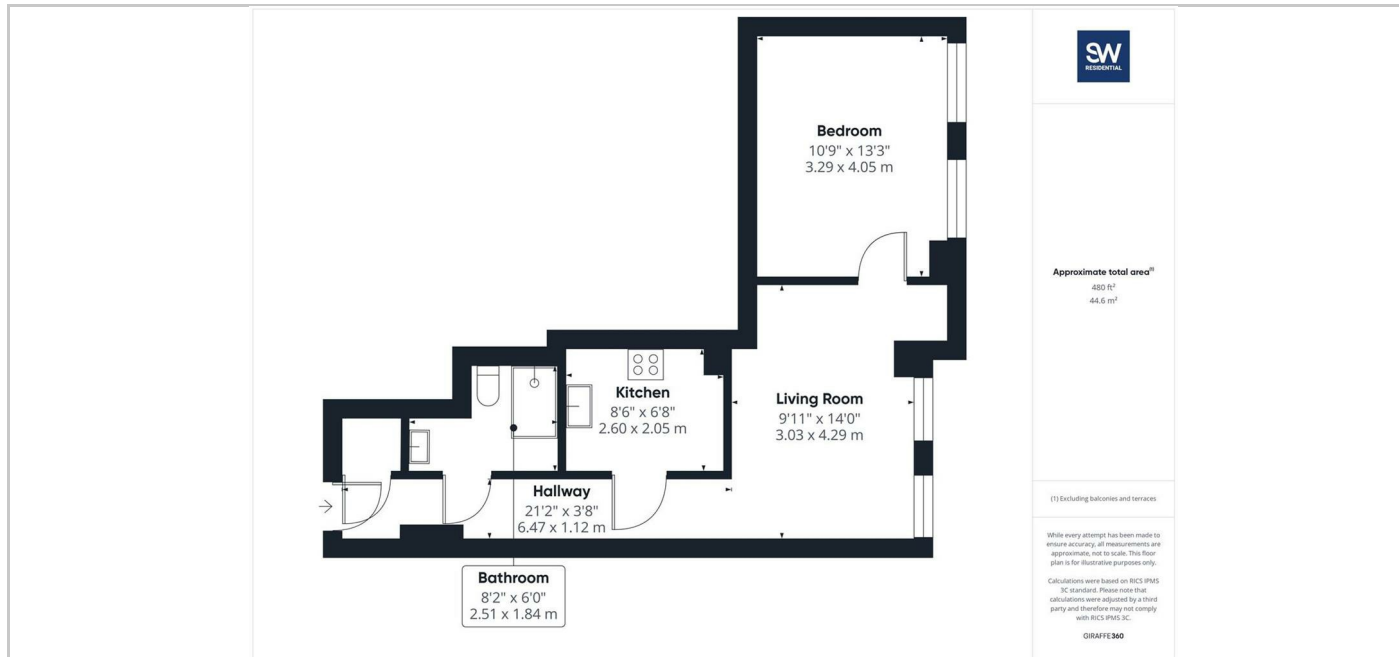
THE PROPERTY

A fantastic opportunity to purchase this spacious one bedroom apartment at the sought after 2 Great George Street development in the heart of Leeds City Centre.

This apartment will appeal to those purchasers who prefer the traditional approach of a separate kitchen but with all the modern amenities that this unique development has to offer.

This property would lend itself to either being a home or an investment property.

In addition to the fantastic space that this apartment offers, the apartment also includes access to the communal facilities available within the development including a residents only gym on the ground floor, concierge services and access to the communal rooftop terrace providing outdoor relaxation space along with breathtaking City views.



SITUATION

Directions

6th Floor Central Square, 29 Wellington Street, West Yorkshire, LS1 4DL
 Tel: 0113 221 6000 Email: residential@sw.co.uk