

4 West Point - 081235 29 Wellington Street, Leeds, LS1 4JJ

£1,100 PCM

SW
RESIDENTIAL

- Two Double Bedrooms
- Two Bathrooms
- Spacious Open Plan Living Area
- First Floor
- Recently decorated throughout
- Council Tax Band D
- Excellent Location
- Furnished
- Available NOW

THE PROPERTY

A spacious two bedroom apartment situated on the first floor.

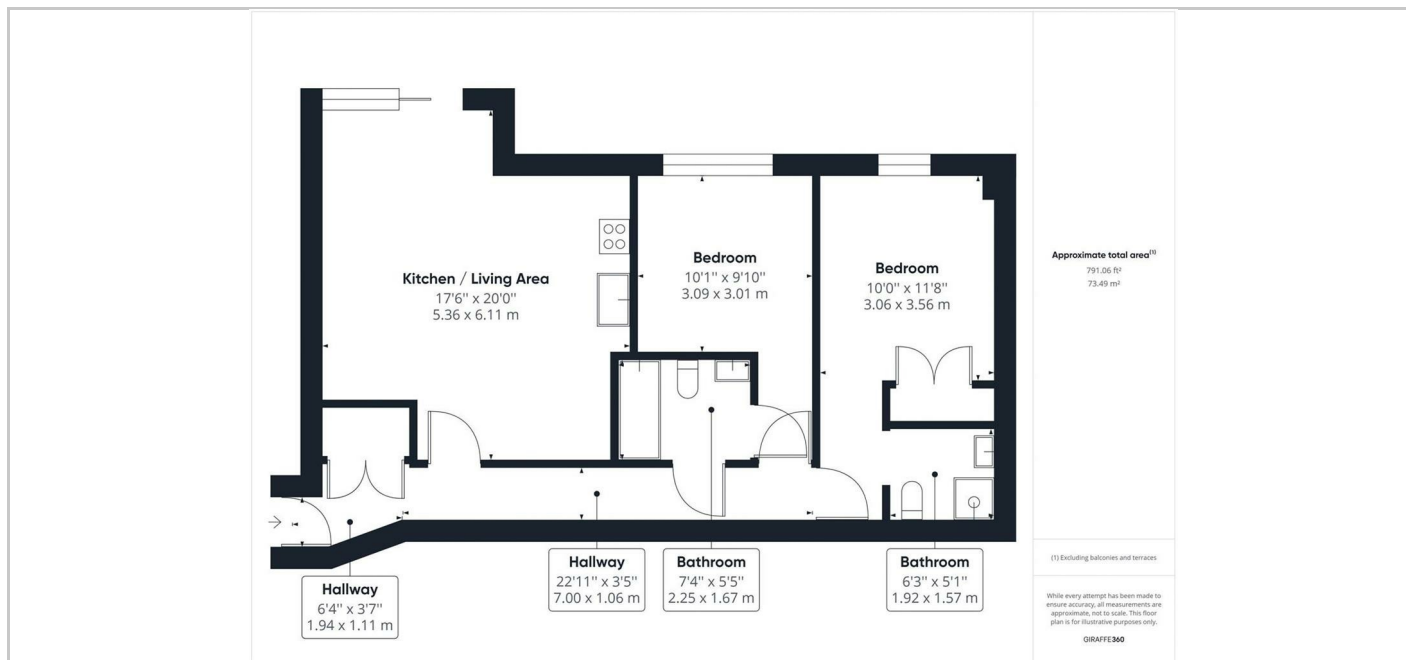
With good size open plan living room and kitchen, two double bedrooms with en-suite shower room to master and direct access to house bathroom from second bedroom.

The property benefits from being a short walk from the city's train station and is close to local amenities including a variety of shops, bars and restaurants.

The property is furnished.

Available Now.

SITUATION



Directions

6th Floor Central Square, 29 Wellington Street, West Yorkshire, LS1 4DL
Tel: 0113 221 6000 Email: residential@sw.co.uk