



**57 Santorini - 054313 City Island**

Gotts Road, Leeds, LS12 1DP

Guide Price £140,000



1



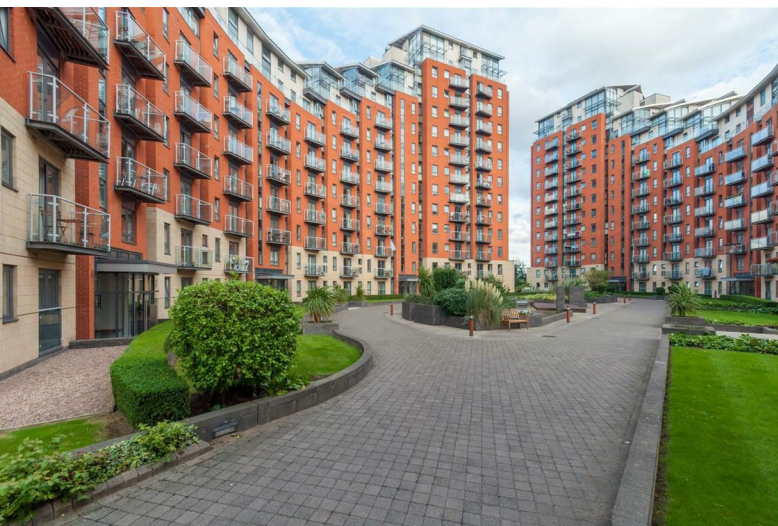
1



1



c



## Description

Welcome to this charming one-bedroom apartment located in the heart of Leeds, on Santorini, Gotts Road. This property boasts a spacious layout with an open plan living area and kitchen, perfect for modern living.

Situated on the South eastern fringe of the City centre, this apartment offers both convenience and tranquillity. Its prime location provides easy access to the regional road network and is within walking distance of the bustling city centre, offering a perfect blend of urban amenities and peaceful surroundings.

One of the unique features of this property is its direct access to the Leeds Liverpool canal towpath, making it an ideal spot for outdoor enthusiasts. Whether you enjoy running, walking, or cycling, this apartment offers a gateway to a healthy and active lifestyle right at your doorstep.

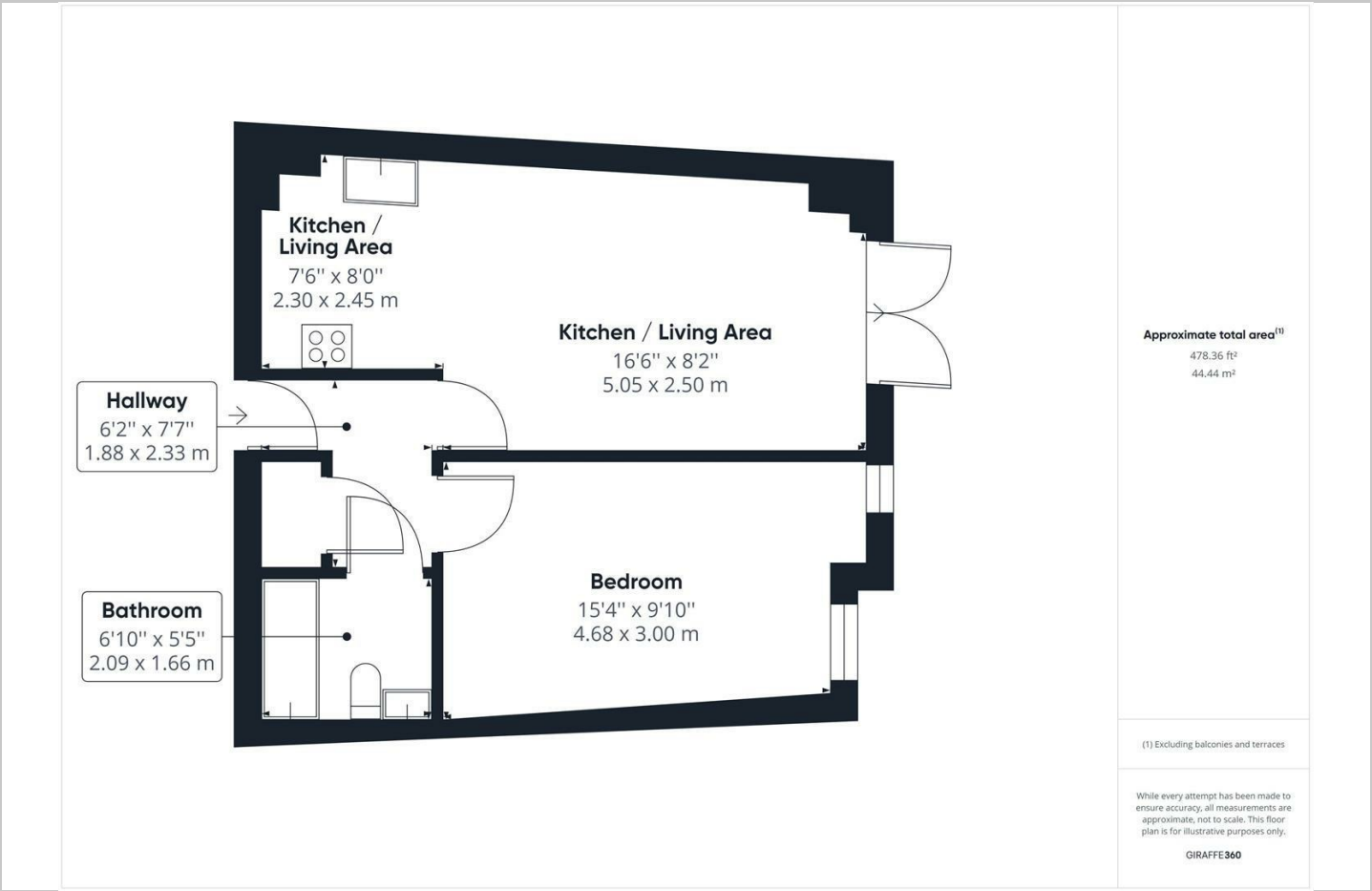
Don't miss out on the opportunity to own this delightful apartment that combines the best of city living with a touch of nature. Contact us today to arrange a viewing and experience the charm of Santorini, Gotts Road for yourself.

For sale with no chain.

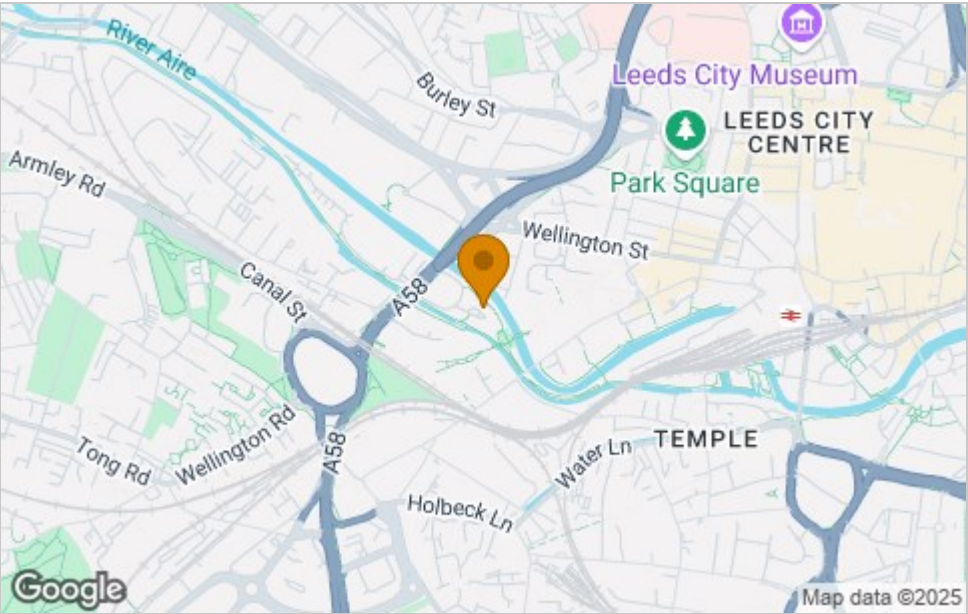




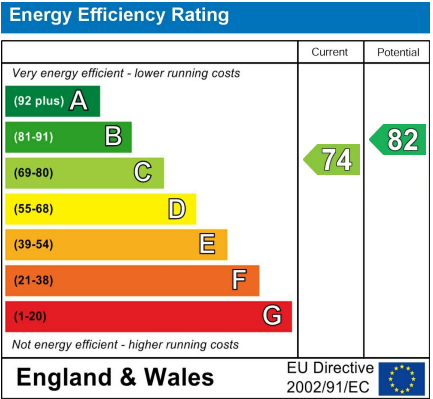
Floor Plan



Area Map



Energy Efficiency Graph



Viewing

Please contact our Leeds Residential Office on 0113 221 6000 if you wish to arrange a viewing appointment for this property or require further information.

These particulars, whilst believed to be accurate are set out as a general outline only for guidance and do not constitute any part of an offer or contract. Intending purchasers should not rely on them as statements of representation of fact, but must satisfy themselves by inspection or otherwise as to their accuracy. No person in this firms employment has the authority to make or give any representation or warranty in respect of the property.