



TO LET

40 St George Building - 172447 The Saint George Building, Great George Street, Le
Yorkshire, LS1 3DL
£1,300 PCM

SW
RESIDENTIAL

- Two Double Bedrooms
- Spacious Open Plan Living Room With Dual Aspect
- Contemporary Kitchen
- Balcony to Living Room
- Excellent City Views
- Furnished
- Available Now
- Council Tax Band C

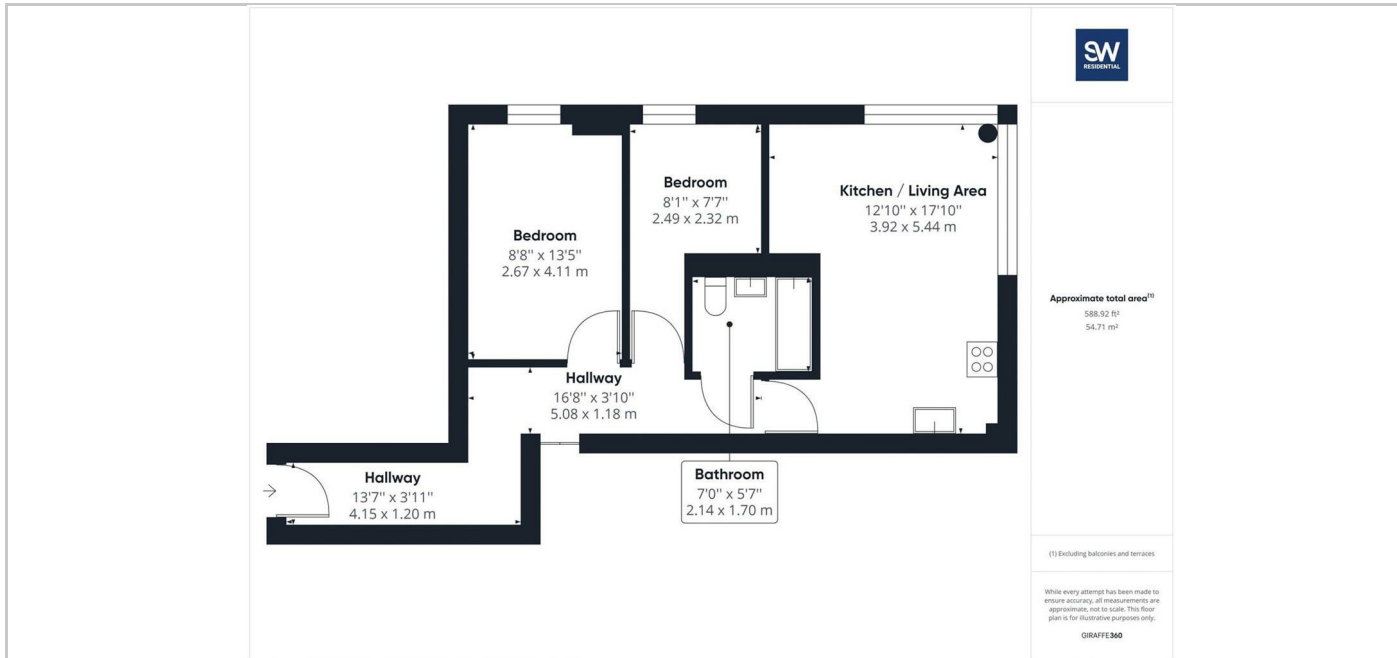
THE PROPERTY

Welcome to St George Building on Great George Street in the heart of the City Centre. This stunning apartment boasts a spacious and bright living room, perfect for relaxing or entertaining guests. With two cosy bedrooms, there's plenty of space for a small family or guests staying over.

One of the highlights of this property is the lovely balcony attached to the living room, where you can enjoy a cup of tea in the morning or unwind after a long day while taking in the views of the bustling city below.

Conveniently located near Leeds General Infirmary, Leeds Dental School, and the University of Leeds, this apartment offers easy access to work or study, making it an ideal choice for professionals or students looking for a comfortable and well-connected place to call home.

Don't miss out on the opportunity to make this large and airy apartment your own! Available from early September, this property is sure to be snapped up quickly. Contact us today to arrange a viewing and envision yourself living in this fantastic space in the heart of Leeds.



SITUATION

Directions

6th Floor Central Square, 29 Wellington Street, West Yorkshire, LS1 4DL
 Tel: 0113 221 6000 Email: residential@sw.co.uk