



1 Scotland Close - 181713, Horsforth, Leeds, West Yorkshire, LS18 5SG

£1,550 PCM



- Five Bedrooms
- Large Kitchen and Separate Utility
- Driveway and Garage
- Council Tax Band F
- Available mid July
- Three Reception Rooms
- Gardens to Three Sides
- Excellent Location
- 6 Month Let Only

## THE PROPERTY

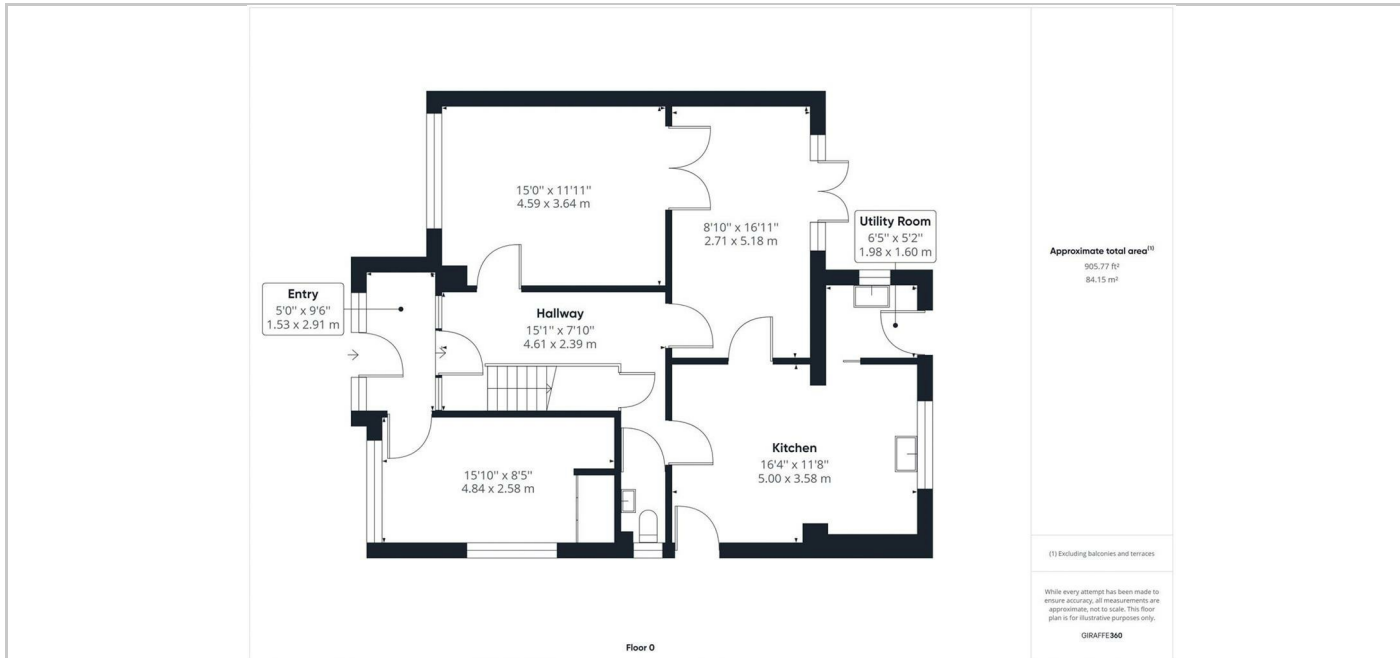
Welcome to this charming detached house located on Scotland Close in the picturesque area of Horsforth, Leeds LS18. This property boasts three reception rooms, perfect for entertaining guests or simply relaxing with your family. With five spacious bedrooms, there is plenty of room for everyone to enjoy their own space.

Parking will never be an issue with space for two vehicles, making coming home a breeze. The semi-rural location provides a peaceful and idyllic setting, ideal for those looking to escape the hustle and bustle of city life.

Surrounded by gardens on three sides, this house offers a lovely outdoor space to enjoy the fresh air and perhaps even try your hand at gardening. For commuters, the proximity to Horsforth Train Station is a definite plus, making travel easy and convenient.

This property is available for a fixed six-month tenancy starting in mid-July, offering a great opportunity for those looking for a comfortable and spacious home in a desirable location. Don't miss out on the chance to make this house your own and enjoy all that it has to offer.

## SITUATION



## Directions

6th Floor Central Square, 29 Wellington Street, West Yorkshire, LS1 4DL  
Tel: 0113 221 6000 Email: residential@sw.co.uk