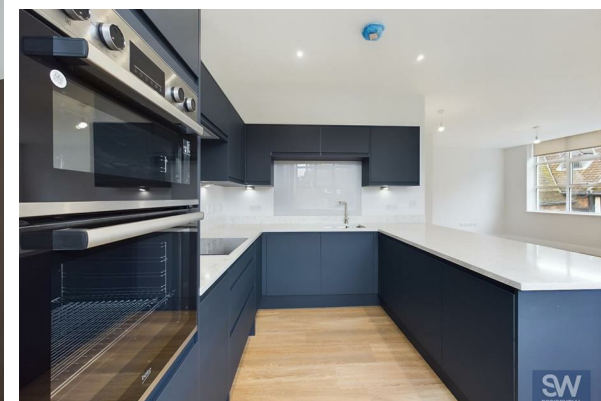




TO LET



9, Church House Church House, Ogleforth, York, YO1 7JN
£3,500 Per Calendar Month

SW
RESIDENTIAL



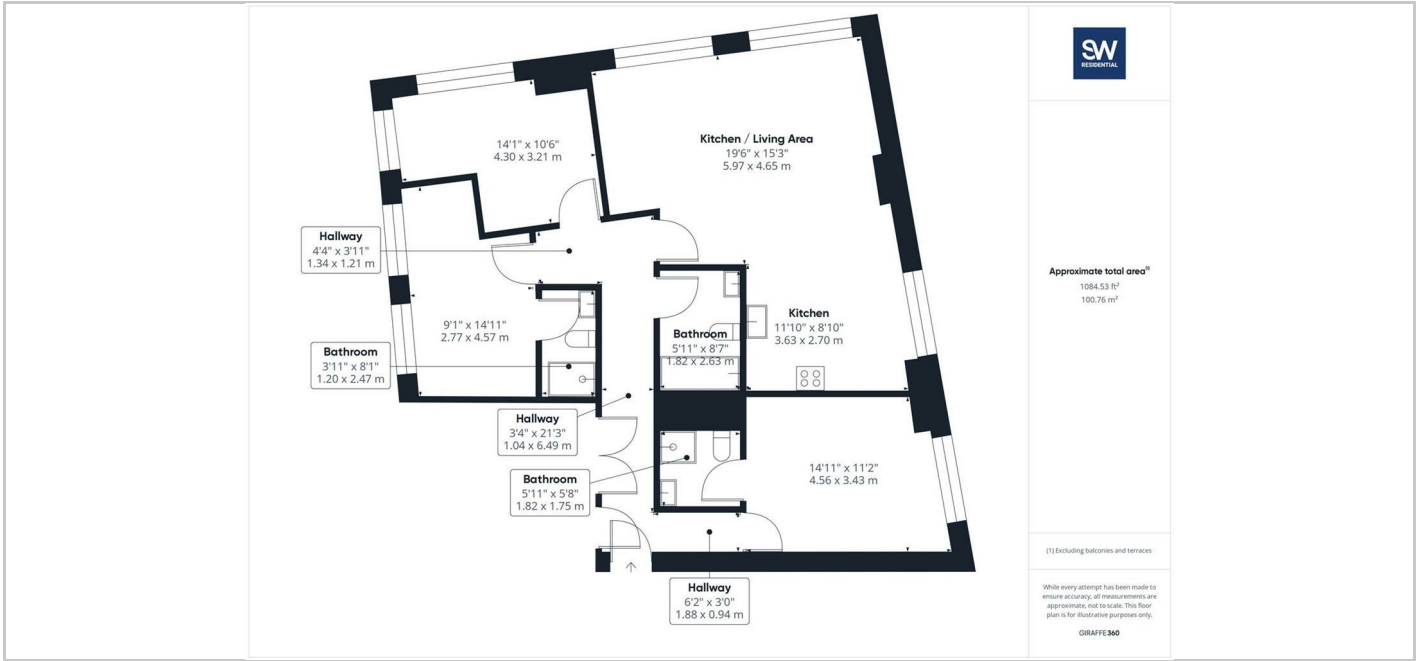
THE PROPERTY

Welcome to Church House, Ogleforth, York - a truly remarkable property that offers a luxurious living experience in the heart of this historic city.

Situated on the second floor, this spacious apartment boasts unrivaled views of the iconic York Minster, providing a picturesque backdrop to your everyday life. With one large reception room, three bedrooms, and two bathrooms, this property offers ample space for comfortable living.

The apartment comes fully equipped with white goods, ensuring convenience from the moment you move in. Please note that the furniture shown is for illustration purposes only, allowing you the freedom to design and furnish the space to your own taste and style.

Whether you are captivated by the stunning views, the generous living space, or the prime location in York, this apartment presents a unique opportunity to own a piece of history in this charming city. Don't miss out on the chance to make Church House your new home.



Directions

6th Floor Central Square, 29 Wellington Street, West Yorkshire, LS1 4DL
Tel: 0113 221 6000 Email: residential@sw.co.uk