



TO LET



2, Church House Church House, Ogleforth, York, YO1 7JN
£1,750 Per Calendar Month





THE PROPERTY

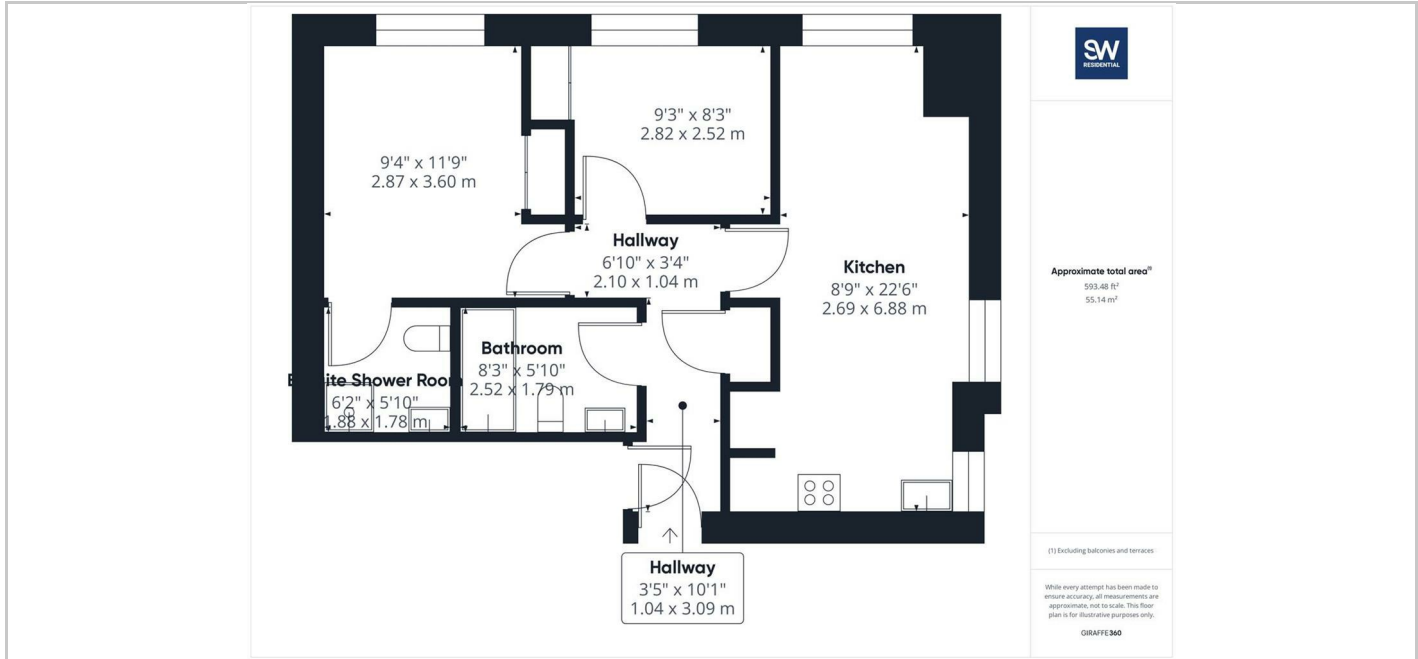
Welcome to Church House in the picturesque Ogleforth, York! This charming two-bedroom apartment is a hidden gem in one of the most sought after locations in York.

As you step into this delightful property, you are greeted by a spacious open plan living area that offers endless possibilities for relaxation and entertainment. The comprehensive kitchen is perfect for whipping up your favourite meals while still being part of the conversation with your guests.

With two well-appointed bedrooms and two bathrooms, this apartment provides the perfect space for a small family, a couple, or even someone looking for a home office. The ground floor location adds convenience and accessibility to this already attractive property.

Church House is not just a place to live; it's a lifestyle waiting to be embraced. The competitive pricing makes it an excellent opportunity for those looking to rent within minutes walk of the City and all it has to offer.

Please note that the furniture shown in the images is for illustration purposes only, allowing you to envision the potential of this wonderful apartment. Don't miss out on the chance to make Church House your new home sweet home in the heart of York!



SITUATION

Directions

6th Floor Central Square, 29 Wellington Street, West Yorkshire, LS1 4DL
Tel: 0113 221 6000 Email: residential@sw.co.uk