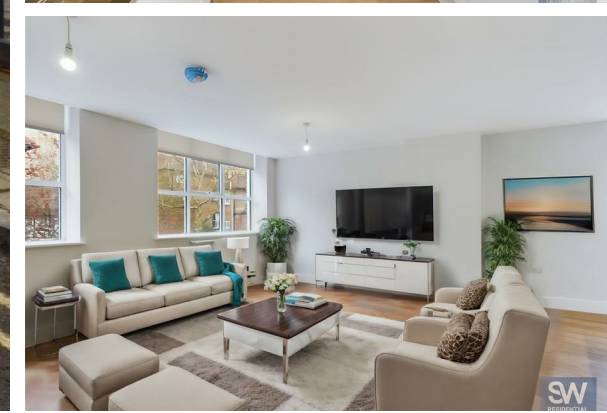




TO LET



6, Church House Church House, Ogleforth, York, YO1 7JN

£1,850 Per Calendar Month





## THE PROPERTY

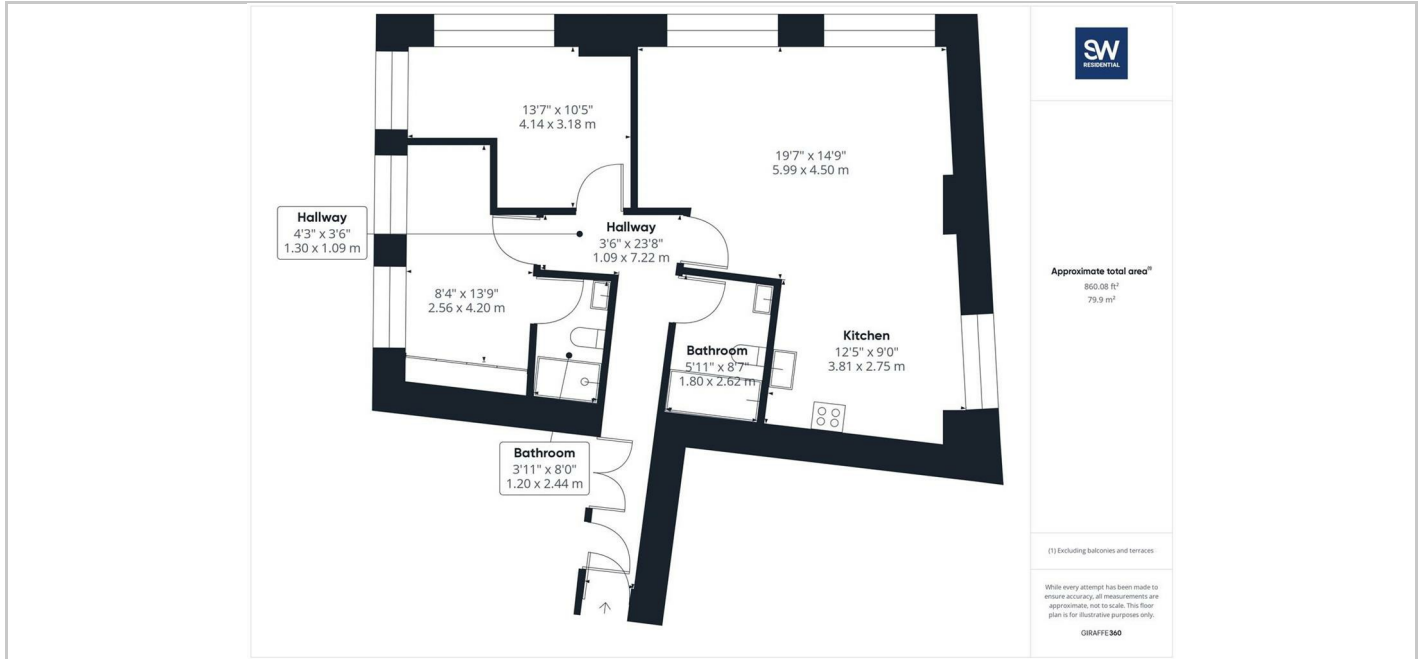
Welcome to Church House, Ogleforth, York - a stunning apartment that offers the perfect blend of modern living and historical charm.

This newly converted property, built in 2024, boasts a spacious open plan living area and kitchen, ideal for entertaining guests or simply relaxing in style. The large windows on two sides flood the space with ample natural light, creating a bright and airy atmosphere throughout.

With two bedrooms and two bathrooms, this apartment provides comfortable living arrangements for individuals or small families. Imagine waking up to fabulous city views every morning, a sight that will never cease to inspire.

Convenience is key in this property, as it comes fully equipped with white goods included, making your move-in process a breeze. Please note that the furniture shown in the images is for illustration purposes only, allowing you the freedom to decorate and furnish the space to your own taste.

Don't miss out on the opportunity to make this apartment your new home. Contact us today to arrange a viewing and experience the beauty and elegance of Church House for yourself.



## SITUATION

## Directions

6th Floor Central Square, 29 Wellington Street, West Yorkshire, LS1 4DL  
Tel: 0113 221 6000 Email: residential@sw.co.uk