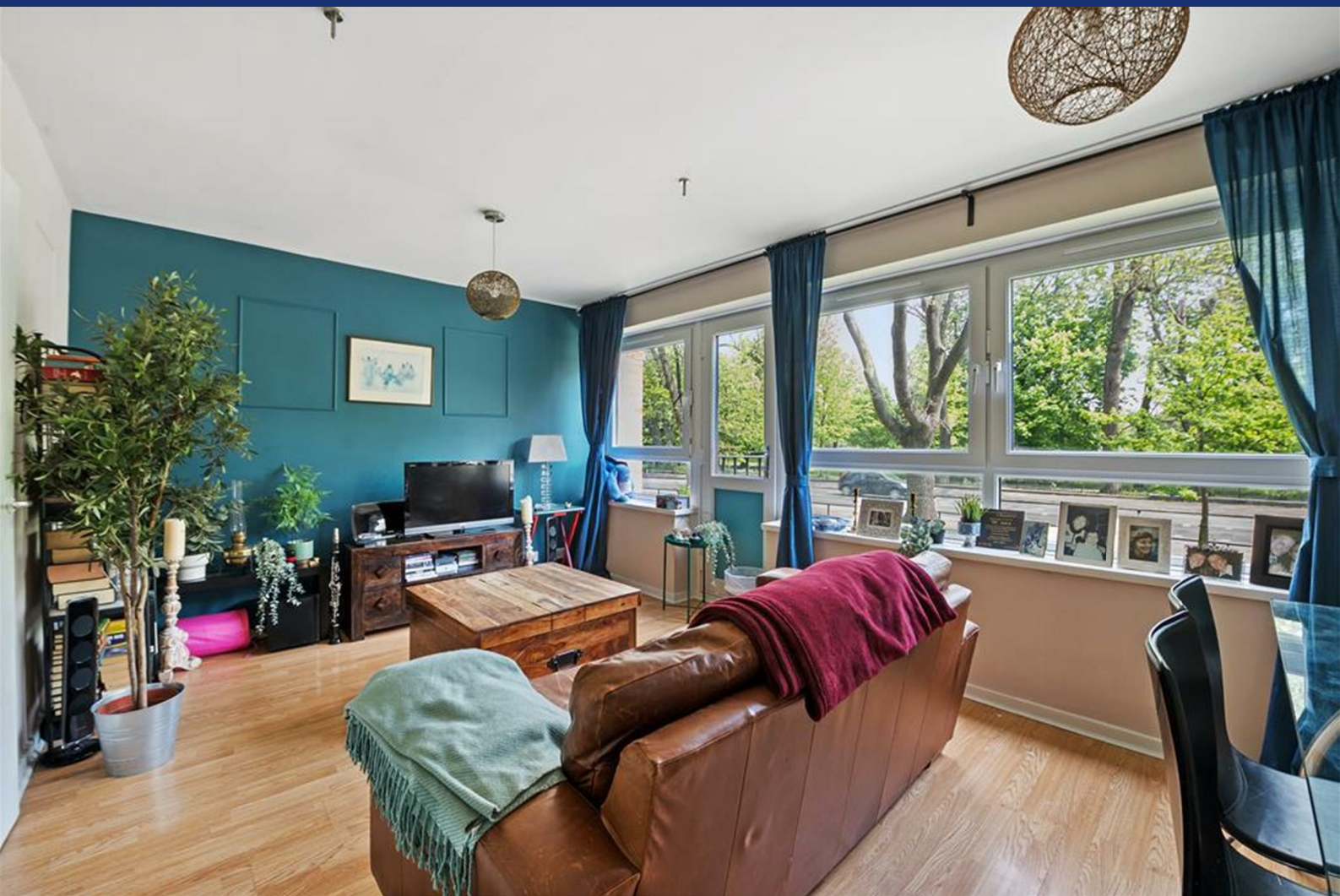


HUNTERS[®]

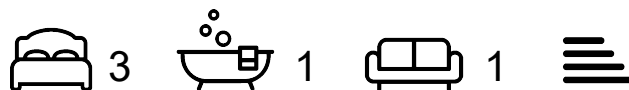
HERE TO GET *you* THERE



Queens Drive

London, N4 2XD

£2,695 Per Calendar Month



Spacious 3 bedroom split level flat set across the second and third floor of this well maintained low rise building, this duplex flat offers a wealth of space and features to include kitchen diner, large separate living room with views overlooking Clissold Park, ground floor W.C, three bedrooms on the first floor and family bathroom.

Situated opposite Clissold Park, Queens Drive is a sought after residential turning in Finsbury Park and benefits from excellent transport links to the city via the Piccadilly and Victoria lines. Within 15 minutes of Arsenal underground station (Piccadilly Line) and walking distance to the fantastic Blackstock Road, with its array of independent shops, bars and restaurants.



Area Map



Floor Plans



Energy Efficiency Graph



These particulars are intended to give a fair and reliable description of the property but no responsibility for any inaccuracy or error can be accepted and do not constitute an offer or contract. We have not tested any services or appliances (including central heating if fitted) referred to in these particulars and the purchasers are advised to satisfy themselves as to the working order and condition. If a property is unoccupied at any time there may be reconnection charges for any switched off/disconnected or drained services or appliances - All measurements are approximate.

THINKING OF SELLING? If you are thinking of selling your home or just curious to discover the value of your property, Hunters would be pleased to provide free, no obligation sales and marketing advice. Even if your home is outside the area covered by our local offices we can arrange a Market Appraisal through our national network of Hunters estate agents.