

HUNTERS[®]

HERE TO GET *you* THERE



Statham Grove

London, N16 9DP

£4,995 Per Month



*** CURRENTLY UNDER GOING REFURBISHMENT ***

A beautifully spacious four bedroom, 4 bathroom house moments away from Clissold Park, currently undergoing a high-spec renovation to create a modern, stylish home.

The property features four generous double bedrooms, two of which benefit from sleek, fully tiled en suite bathrooms, complemented by two additional contemporary family bathrooms. The separate kitchen is designed practically and further benefiting from a utility room, while the light-filled living room offers a welcoming space to relax or host guests.

At the rear, a private garden provides the perfect outdoor retreat, ideal for enjoying the sunshine.

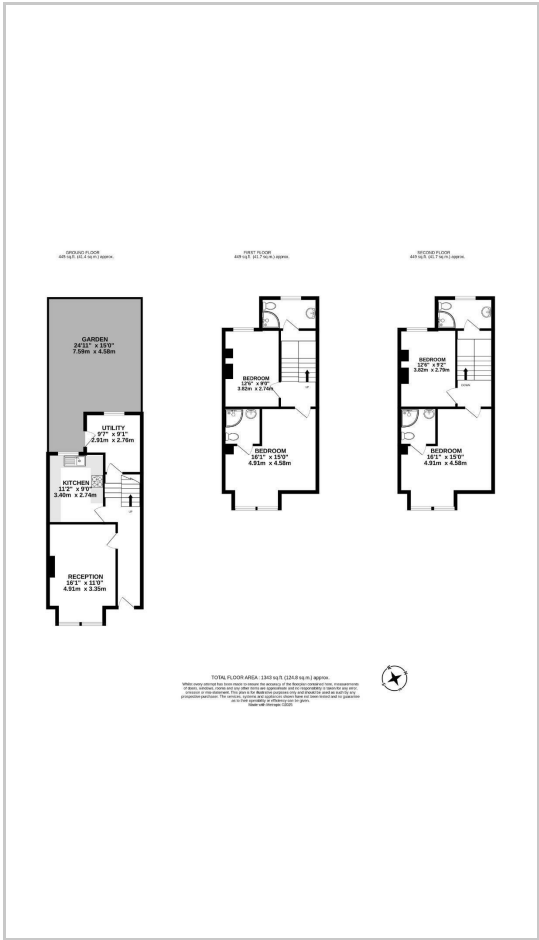
Situated moments from the leafy Clissold Park, this home offers access to open green spaces, playgrounds, and sporting facilities, while Stoke Newington's Church Street is just a short stroll away, offering a vibrant



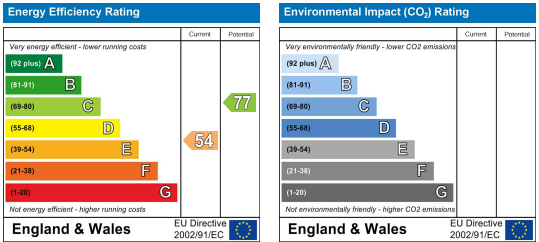
Area Map



Floor Plans



Energy Efficiency Graph



These particulars are intended to give a fair and reliable description of the property but no responsibility for any inaccuracy or error can be accepted and do not constitute an offer or contract. We have not tested any services or appliances (including central heating if fitted) referred to in these particulars and the purchasers are advised to satisfy themselves as to the working order and condition. If a property is unoccupied at any time there may be reconnection charges for any switched off/disconnected or drained services or appliances - All measurements are approximate.

THINKING OF SELLING? If you are thinking of selling your home or just curious to discover the value of your property, Hunters would be pleased to provide free, no obligation sales and marketing advice. Even if your home is outside the area covered by our local offices we can arrange a Market Appraisal through our national network of Hunters estate agents.